

**BUTT-WELD ENGINEERING DATA**

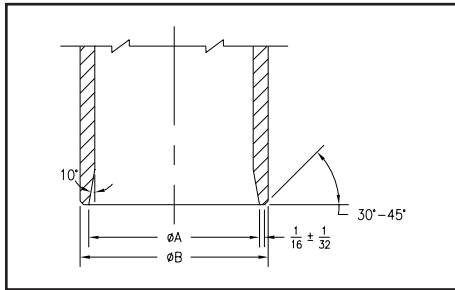
**Butt-Welding Casting Outlets**

The outlet sections of all cast carbon steel or cast stainless steel products as specified from this brochure shall conform to ANSI-B36.10M-85 and ANSI-B36.19M-85 standards for pipe wall thicknesses for Schedule 10, Schedule 40, or Schedule 80 as specified.

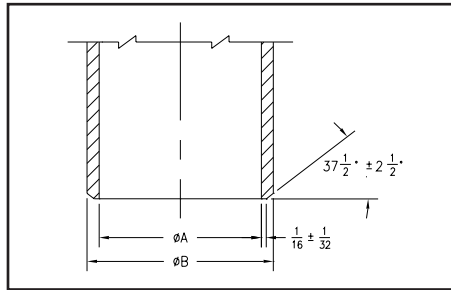
Butt-welding ends of the above mentioned sections shall conform to ANSI B16.25-86 standard for plain welding bevel of  $37\frac{1}{2}^\circ + 2\frac{1}{2}^\circ$  and root face (land) of  $\frac{1}{16}'' + \frac{1}{32}''$ .

All outlet requirements must be specified and made known to the manufacturer prior to quotation of prices of products applicable to the project.

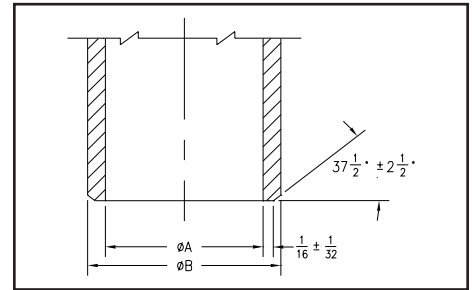
**Schedule 10S Pipe**



**Schedule 40 Pipe**

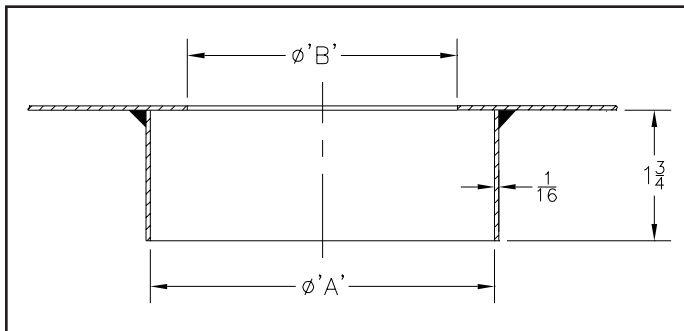


**Schedule 80 Pipe**

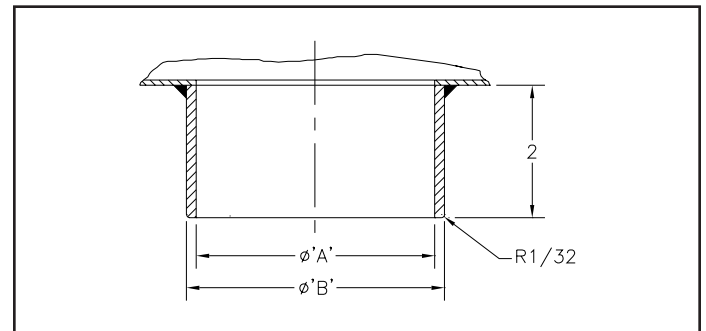


Schedule Pipe	Dimensions in Inches									
	Pipe Size									
	2		3		4		6		8	
	A	B	A	B	A	B	A	B	A	B
10S	2.157	2.375	3.260	3.500	4.260	4.500	6.375	6.625	8.329	8.625
40	2.067	2.375	3.068	3.500	4.026	4.500	6.065	6.625	7.981	8.625
80	1.939	2.375	2.900	3.500	3.826	4.500	5.761	6.625	7.625	8.625

**FABRICATED STAINLESS STEEL OUTLET DATA**



**Neo-Loc**



**No-Hub**

Pipe Size	Dimensions in Inches			
	Neo-Loc		No-Hub	
	A	B	A	B
2	3.010	2	2	2.31
3	4.080	3	3	3.31
4	5.102	4	4	4.38