

TYPICAL INSTALLATIONS

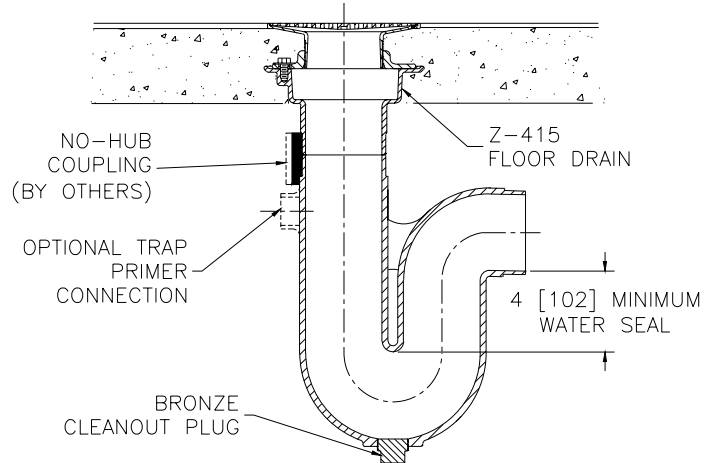
GENERAL PRODUCT INFORMATION AND PRODUCT COMPLIANCE

Z1000 Series products include: Deep Seal Traps, Trap Primers, Trap Primer Connections, Air Gaps, Adapters, and Backwater Valves. These products can be defined as follows:

DEEP SEAL TRAP Z1000

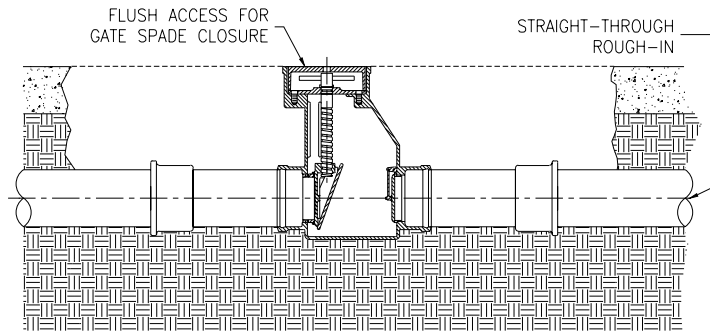
Designed to be used in conjunction with bottom outlet floor drains. Deep seal traps provide positive protection against sewer gas, germs, and odors when properly maintained. It is recommended that automatic trap primers be specified in concert with deep seal traps.

Zurn deep seal trap installed with a Zurn floor drain provides a minimum 4" deep water seal.



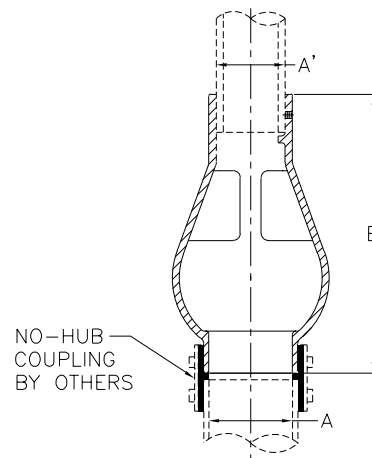
GATE-TYPE BACKWATER VALVE Z1088

Zurn spade-type backwater valve offers both a restrictive flapper-type and a manually operated gate valve which may be closed to provide positive protection during prolonged periods of flooding. 4" valves utilize a PVC flapper valve that hangs closed. O-ring on seat provides a positive seal. 6" valves utilize a conventional brass flapper seal arrangement that hangs 1/4" open. The Z1088 offers straight through connections (no offset – see Z1090, Z1095), which is extremely important for installations in existing drainage lines, or where minimal pitch is required.



AIR GAPS Z1025

Zurn air gaps provide a vertical break in plumbing systems which are open to the atmosphere. Zurn air gaps are designed to provide positive protection against backflow and conform to open area requirements of ANSI A112.1.2. Consult local codes for specific installation information. It is recommended that air gaps be specified for use in areas where splashing water from the air gap will not be objectionable or cause damage.

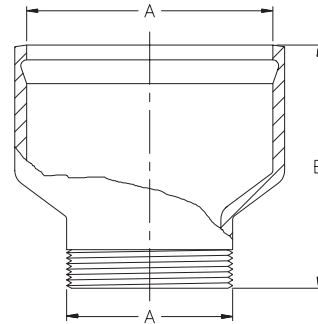


TYPICAL INSTALLATIONS

ADAPTERS

Z1030, Z1032, Z1033, Z1040

Zurn offers a wide range of adapters, reducers, and connectors used to satisfy job conditions and piping systems.



Z1030 Illustrated

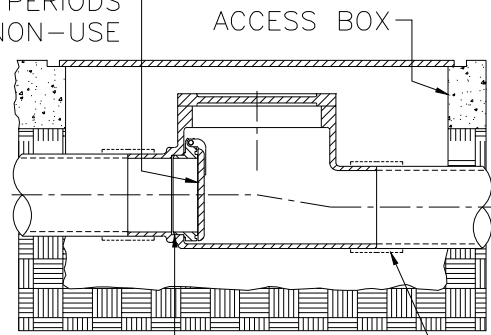
FLAPPER-TYPE BACKWATER VALVE

Z1090

Designed for applications where excessive rainfall, stoppages, tidewater, and inadequate drainage conditions cause backflow and flooding. Backwater valves are designed to restrict backflow surges and provide a degree of protection from health hazards associated with backflow and flooding. Zurn backwater valves should be checked periodically for proper operation and will only restrict backflow when free of debris and in good working condition. Fouling by sludge and debris may obstruct the backwater device. Zurn backwater valves are designed for gravity flow applications and comply with ANSI Specification A112.14.1.

3" and 4" flapper-type backwater valves utilize a PVC flapper valve that hangs closed. O-ring on seat provides a positive seal. All other sizes of flapper-type backwater valves utilize a conventional brass flapper seal arrangement that hangs 1/4" open. Z1090 has a gasketed bolted cover for easy access and uses an offset body design to ensure pitch to drain line.

NON-CORROSIVE,
DURABLE, PVC
FLAPPER HANGS CLOSED
DURING PERIODS
OF NON-USE



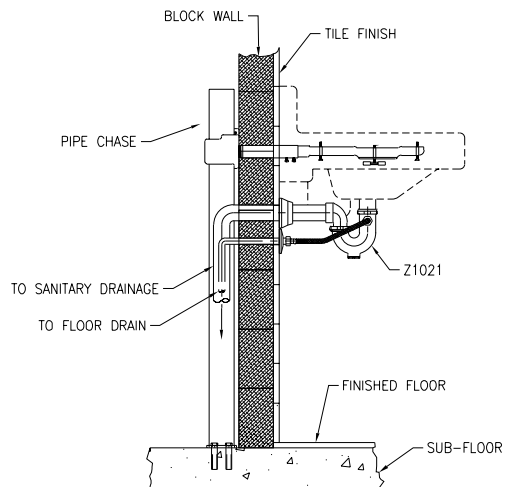
SECURED NEOPRENE
O-RING SEAL

NO-HUB
COUPLING
(BY OTHERS)

WATER SAVER TRAP PRIMER

Z1021

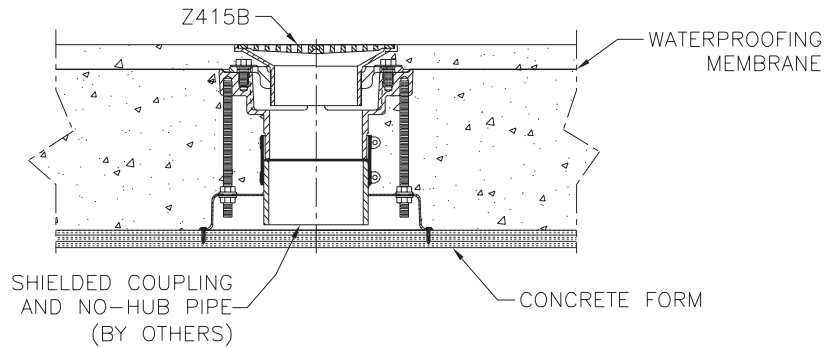
Designed to be used in conjunction with 1-1/4" sink outlet, the Z1021 diverts drain water through a flexible hose to an infrequently used floor drain and primes the trap seal of the drain.



TYPICAL INSTALLATIONS

FLOOR DRAIN INSTALLATION STABILIZER Z1035

Drain installation stabilizer (designed for 8-3/8" diameter drain body) shown installed with a Z415B floor drain in concrete, using a waterproofing membrane and no-hub outlet connection. Also available with Neo-Loc outlet connection.



FLOOR DRAIN INSTALLATION STABILIZER Z1036

Drain installation stabilizer (designed for 12" and 15" diameter drain bodies) shown installed with a Z534 parking deck drain with support flange in concrete, using No-Hub outlet connection. Also available with Neo-Loc outlet connection.

