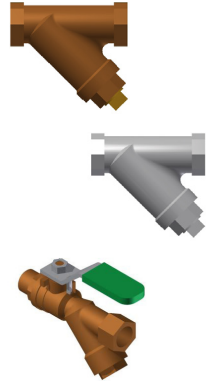


ACCESSORIES



STRAINER

INLET THREAD	OUTLET THREAD	PART NUMBER	BOM PARTS	DESCRIPTION
3/8" FNPT	3/8" FNPT	38-SXL (with plug in cover)	101-41S	SCREEN (20MESH)
			119N	CAP O-RING
			101-7B	PLUG
3/8" FNPT	3/8" FNPT	38-SXL (no plug in cover)	101-41S	SCREEN (20MESH)
			119N	CAP O-RING
3/8" FNPT	3/8" FNPT	38-SST (no plug in cover)	101-41S	SCREEN (20MESH)
			119N	CAP O-RING
3/8" MNPT	3/8" FNPT	38-850MSXL	BALL VALVE W/INTEGRAL STRAINER, 3/8" MALE LEAD FREE SS HANDLE	



SPEED CONTROL

INLET THREAD	OUTLET THREAD	PART NUMBER	DESCRIPTION
3/8" MNPT	3/8" FNPT	38-SC1, 38-SC1ST	3/8" 1-WAY, ANGLE BODY/3/8" 1-WAY SS
1/2" FNPT	1/2" FNPT	12-SC2, 12-SC2ST	1/2" 2-WAY, INLINE BODY, 1/2" 2-WAY SS
1/2" MNPT	1/2" FNPT	12-SC2AM	1/2" 2-WAY, ANGLE BODY
-	-	RK38-SC1R, RK38-SC1STR	RUBBER REPAIR KIT, 3/8" SC1 & SS
-	-	RK12-SC1R, RK12-SC1STR	RUBBER REPAIR KIT, 1/2" SC1 & SS



POSITION INDICATOR

CONNECTION THREAD	PART NUMBER	MAIN VALVE SIZE	DESCRIPTION
1/2" MNPT	114-212-ZPI	1-1/4" - 2-1/2"	POS. IND. 1-1/4"-2-1/2" ZW200 & SS
	114-212-ZPIST		
1/2" MNPT	3-ZPI, 3-ZPIST	3"	POS. IND. 3" ZW200 & SS
3/4" MNPT	4-ZPI, 4-ZPIST	4"	POS. IND. 4" ZW200 & SS
3/4" MNPT	6-ZPI, 6-ZPIST	6"	POS. IND. 6" ZW200 & SS
1" MNPT	8-10-ZPI, 8-10-ZPIST	8" - 10"	POS. IND. 8" - 10" ZW200 & SS
1" MNPT	12-16-ZPI, 12-16-ZPIST	12" - 16"	POS. IND. 12" - 16" ZW200 & SS

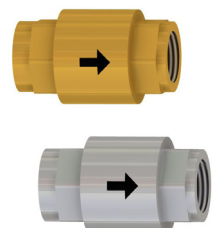


REPAIR KITS

REPAIR KIT ZPI & ZPIST MODEL REPAIR KIT, 1-1/4" - 4" POSITION INDICATOR RK114-4-ZPI			REPAIR KIT ZPI & ZPIST MODEL REPAIR KIT, 6" - 10" POSITION INDICATOR RK6-10-ZPI		
ITEM	QTY.	DESCRIPTION	ITEM	QTY.	DESCRIPTION
2004ZPI-36	1	TUBE	2010ZPI-36	1	TUBE
751-12	2	GASKET	751-12	2	GASKET

CHECK VALVES

THREAD	THREAD	PART NUMBER	DESCRIPTION
3/8" FNPT	3/8" FNPT	38-40XL2, 38-40ST	3/8" SINGLE CHECK LEAD FREE & SS
1/2" FNPT	1/2" FNPT	12-40XL2, 12-40ST	1/2" SINGLE CHECK LEAD FREE & SS
3/4" FNPT	3/4" FNPT	34-40XL2, 34-40ST	3/4" SINGLE CHECK LEAD FREE & SS
1" FNPT	1" FNPT	1-40XL2, 1-40ST	1" SINGLE CHECK LEAD FREE & SS



ACCESSORIES



BALL VALVES

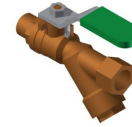
THREAD	THREAD	SIDE TAP	PART NUMBER
3/8" FNPT	3/8" FNPT		38-850TXL, 38-850SS
3/8" MNPT	3/8" FNPT	1/8" FNPT	38-850TMXL, 38-850TMSS
3/8" MNPT	3/8" FNPT		38-850MXLS
1/2" FNPT	1/2" FNPT	1/8" FNPT	12-850TXL, 12-850TSS
1/2" FNPT	1/2" FNPT		12-850XL, 12-850SS
3/4" FNPT	3/4" FNPT	1/4" FNPT	34-850TXL, 34-850TSS
3/4" FNPT	3/4" FNPT	1/8" FNPT	34-850XL, 34-850SS



850XL



850XLT



38-850MXLS

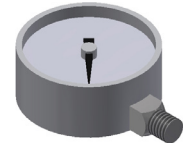
3-WAY GAUGE ISOLATION VALVE

INLET THREAD	TEST PORT THREAD	GAUGE PORT	PART NUMBER
1/4" FNPT	1/4" FNPT	1/4" FNPT	14-48UL



PRESSURE GAUGES

DIAL SIZE	RANGE	CONNECTION	PART NUMBER	NOTES
2"	0 - 300	1/8" NPT	2006-25BP-300	
2-1/2"	0 - 300	1/4" NPT	2004-25-300	
2-1/2"	0 - 400	1/4" NPT	2004-25-400	
2-1/2"	0 - 300	1/8" NPT	2006-25LBP-300	Liquid Filled
2-1/2"	0 - 300	1/4" NPT	2004-25L-300, 2004-25LSS-300	Liquid Filled
2-1/2"	0 - 400	1/4" NPT	2004-25L-400, 2004-25LSS-400	Liquid Filled
3-1/2"	0 - 300	1/4" NPT	2005-25UL	UL/FM



FITTINGS

MALE ADAPTERS

THREAD	THREAD	PART NO. BRASS STRAIGHT	PART NO. BRASS ELBOW	PART NO. 316SS STRAIGHT	PART NO. 316SS ELBOW
1/8" MNPT	1/4" FLARE	18X14FLARE-29	18X14FLARE-52	18X14FLARE-29SS	18X14FLARE-52SS
1/8" MNPT	3/8" FLARE	1/8"X38FLARE-29	18X38FLARE-52	18X38FLARE-29SS	18X38FLARE-52SS
1/8" MNPT	3/8" M COMPRESSION		18X38COMP-52		
1/4" MNPT	1/4" FLARE	14X14FLARE-29		14X14FLARE-29SS	
1/4" MNPT	3/8" M COMPRESSION	5758A-36			
3/8" MNPT	1/4" FLARE	38X14FLARE-29			
3/8" MNPT	3/8" M COMPRESSION		38X38COMP-52		
3/8" MNPT	3/8" FLARE	38X38FLARE-29	38X38FLARE-52	38X38FLARE-29SS	38X38FLARE-52SS
1/2" MNPT	1/2" FLARE	12X12FLARE-29	12X12FLARE-52	12X12FLARE-29SS	12X12FLARE-52SS
3/4" MNPT	3/4" FLARE		34X34FLARE-52		34X34FLARE-52SS

