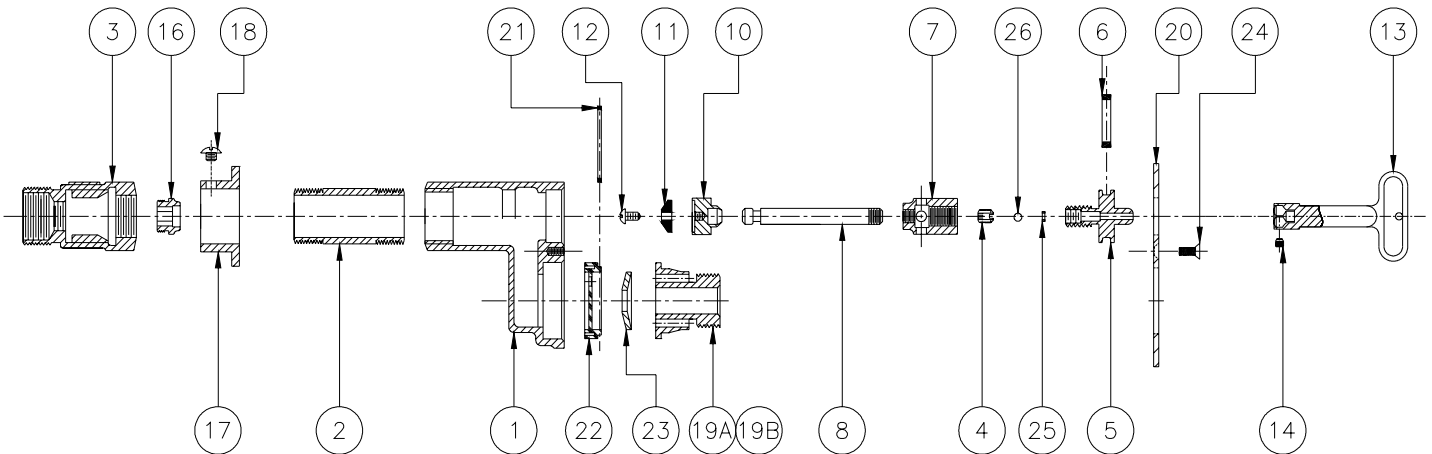
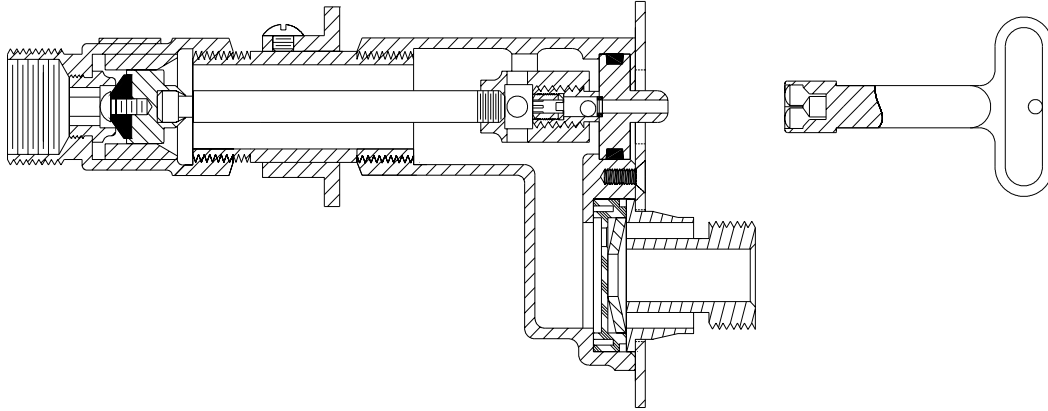




Z1310 WALL HYDRANT ASSEMBLY



LIST OF MATERIAL			
IT.	QTY	PART NO.	DESCRIPTION
1	1	56061-003	HEAD
2	1	50270-XXX	CASING
3	1	31258-001	VALVE HOUSING
* 4	1	51459-001	SET SCREW
* 5	1	25049-002	OPERATING SCREW
* 6	1	23750-028	O-RING
* 7	1	25147-001	OPERATING COUPLING
8	1	45042-XXX	OPERATING ROD
10	1	25050-001	WASHER GUIDE
* 11	1	23075-001	WASHER
* 12	1	14853-042	SCREW #10-24 N.C.
* 13	1	59546-001	KEY
14	1	18006-027	KEY SET SCREW (OPT)

LIST OF MATERIAL			
IT.	QTY	PART NO.	DESCRIPTION
* 16	1	25262-001	REMOVABLE SEAT
17	1	50268-001	WALL CLAMP (OPT)
18	1	26050-004	WALL CLAMP SCREW (OPT)
19A	1	50799-005	3/4" NOZZLE
19B	1	50799-006	1" NOZZLE
20	1	56115-005	FACEPLATE
* 21	1	23750-204	DISCO-RING
22	1	50819-001	DISC
* 23	1	50785-001	"EQUA-BALANCE" SEAL
24	5	22698-047	FACEPLATE SCREW
* 25	1	23750-232	BALL O-RING
* 26	1	51458-001	BALL

* ITEMS ARE AVAILABLE IN -RK REPAIR KIT OPTION BAG #66955-201-9.

Form # H18	Date: 10/28/03	C.N. No. 91516	Rev.
-------------------	-----------------------	-----------------------	-------------