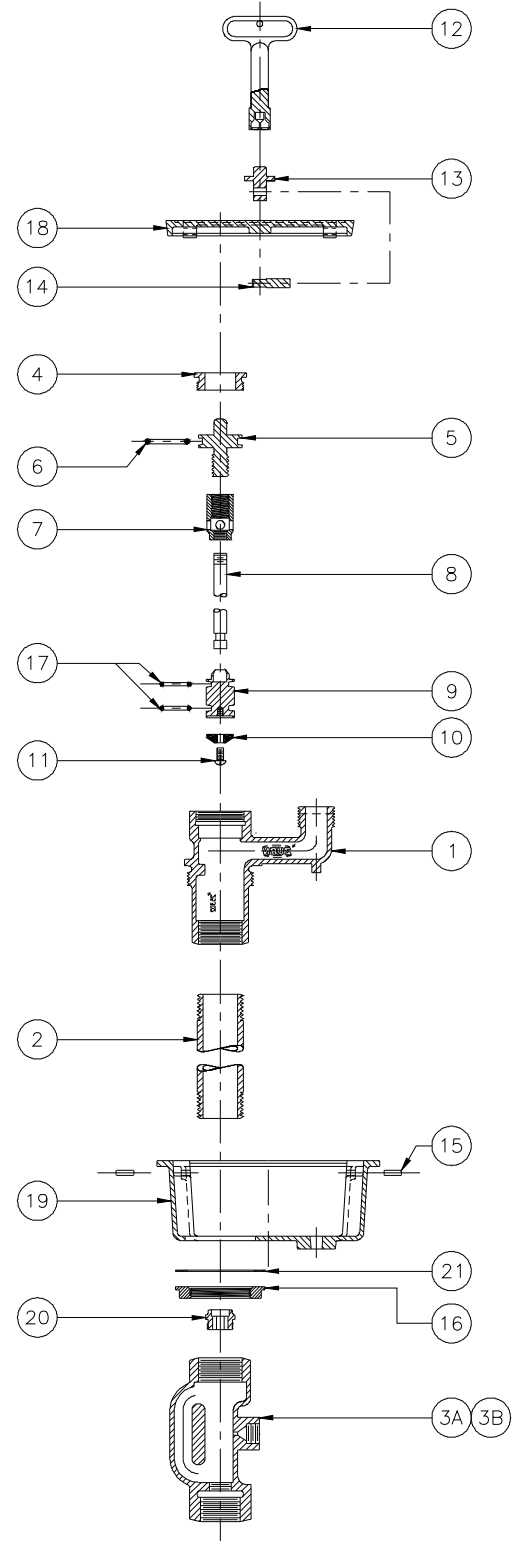
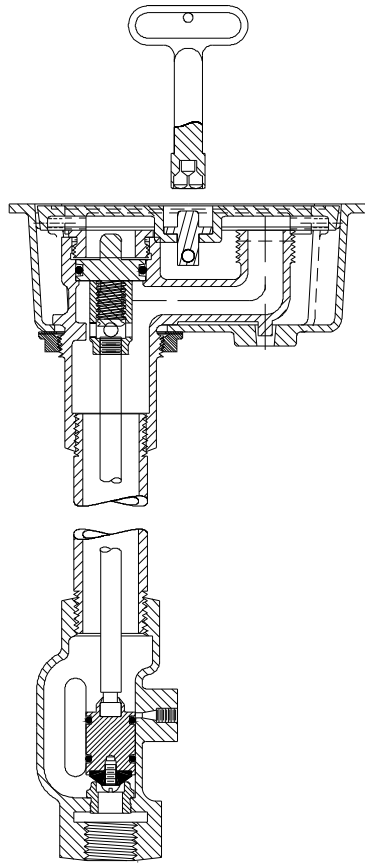




Z1360XL GROUND HYDRANT ASSEMBLY



LIST OF MATERIAL

IT.	QTY	PART NO.	DESCRIPTION
1	1	25302-XL1	HEAD (3/4" HOSE CONN.)
2	1	50270-XXX	CASING
3A	1	25324-XL3	VALVE HOUSING - 3/4" FEMALE NPT INLET
3B	1	25324-XL4	VALVE HOUSING - 1" FEMALE NPT INLET
4	1	22156-002	FACE NUT
*	1	25049-XL1	OPERATING SCREW
*	1	23750-028	O-RING
*	1	25147-XL1	OPERATING COUPLING
8	1	25328-XLX	OPERATING ROD
9	1	25323-XL1	WASHER GUIDE
*	1	23075-001	WASHER
*	1	14853-042	SCREW #10-24 N.C.
*	1	59546-001	KEY
13	1	25306-001	LOCKING PIN MOUNTING
14	1	25307-001	LOCKING PIN
15	2	45553-011	HINGE PIN
16	1	25242-001	LOCKNUT
*	2	23750-036	O-RING
18	1	57423-001	HYDRANT COVER
19	1	25301-001	HYDRANT BODY
*	1	25262-XL1	REMOVABLE SEAT
21	1	21425-060	GASKET

* ITEMS ARE AVAILABLE IN -RK REPAIR KIT OPTION BAG #66955-345-9.