

Connected Hardwired ZEMS-IS Series Sensor Flush Valve

More Control, Less Concern

Today, your restroom comes under scrutiny more than any other space in your building. Be confident in your environment and the user experience.

Zurn Connected Flush Valves, powered by plumbSMART™, combine touchless sensors and IoT technology to keep hands off fixtures and staff on task. What's more? The fully integrated sensor design eliminates the need for extra wiring or cutting, making it easier to install. Connect your plumbing to save costs, stay ahead of cleaning and maintenance, and satisfy guests.



Connect a Better Experience

- Leave a positive user impression
- Keep toilets working and staff on task
- Create a cleaner, smarter restroom



Reduce Water Consumption

- Prove LEED points with data
- Review water consumption trends
- Discover ways to cut back
- Detect issues in real time



Reduce Maintenance Costs

- Optimize resources and costs
- Order parts based on usage
- View automated maintenance calendar
- Schedule repairs and cleaning around usage



Reduce Operational Stressors

- Pinpoint peak usage and hours
- Monitor performance 24/7
- Set alert parameters and permissions

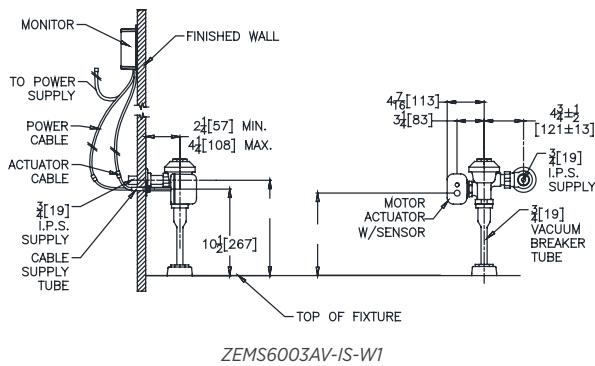
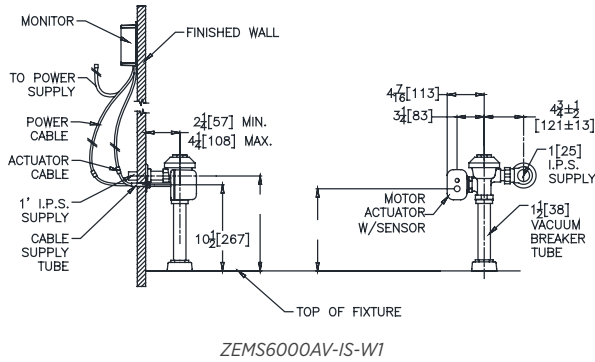


Reduce Germs and Concern

- Meet CDC guidelines
- Upgrade to touchless technologies
- Promote hand hygiene and health

Connected Hardwired ZEMS-IS Series Sensor Flush Valve

Rough-In Dimensions/Overview Dimensions



CLOSET:
ZEMS6000AV-IS-W1
ZEMS6000AV-IS-MOB-W1
ZEMS6000-IS-W1
ZEMS6200-IS-W1



URINAL:
ZEMS6003AV-IS-W1
ZEMS6003AV-IS-MOB-W1
ZEMS6003-IS-W1
ZEMS6203-IS-W1

CLOSET FLOW RATES	
-ONE	1.1 gpf [4.1 Lpf]
-HET	1.28 gpf [4.8 Lpf]
-WS1	1.6 gpf [6.1 Lpf]

URINAL FLOW RATES	
-ULF	0.125 gpf [0.47 Lpf]
-EWS	0.5 gpf [1.9 Lpf]
-WS1	1.0 gpf [3.8 Lpf]



Zurn Gateway

GATEWAY MODEL NUMBERS	
-LTE	ZGW-LORA-W1-LTE
-Ethernet	ZGW-LORA-W1-ETH

How It Works

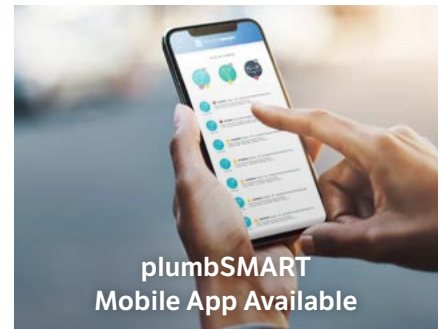
Using sensors, Zurn Connected Flush Valves monitor performance and offer insights by gathering data, such as activations and water usage. The data collected gets communicated from the sensor to the Zurn Gateway. From there, the LAN or LTE* connection transports the product data to a secure Zurn Cloud. The secure Zurn Cloud analyzes your data to deliver real-time insights to plumbSMART**.

Facilities managers and maintenance personnel can receive alerts via email, text and/or push notifications based on their customizable parameters and permissions. The portal also reveals patterns and trends to allow for a deeper dive.

Install the Zurn Gateway within 1,000 feet from the connected product. Register the connected product in plumbSMART. The Zurn Gateway and plumbSMART can support your entire Zurn Connected Products portfolio.

*LTE charges will apply to basic plans

**plumbSMART is free-to-connect to a basic plan with an option to upgrade to a premium plan



App Store® and Apple logo® are registered trademarks of Apple Inc. Google Play and the Google Play logo are trademarks of Google LLC.

CONNECT A BETTER EXPERIENCE

For more information, visit zurn.com/plumbSMART