

# Connected Battery ZER Series Sensor Flush Valve

Faster upgrade. Better experience.

Looking to gain connected capabilities without getting tripped up by wiring during install or a power outage down the road? You can upgrade to a smart, touchless environment in less steps.

Zurn Connected Flush Valves, powered by plumbSMART™, combine sensor operation and IoT technology to keep hands off fixtures and staff on task. That way, you can optimize your resources' time and costs, while prioritizing the user experience.



## Reduce Germs and Concern

- Upgrade to touchless technologies
- Promote hand hygiene and health
- Meet CDC guidelines



## Reduce Maintenance Costs

- Order parts based on usage
- View automated maintenance calendar
- Schedule repairs and cleaning around usage
- Optimize resources and costs



## Reduce Water Consumption

- Review water consumption trends
- Discover ways to cut back
- Detect issues in real time
- Prove LEED points with data



## Reduce Operational Stressors

- Monitor performance 24/7
- Set alert parameters and permissions
- Pinpoint peak usage and hours

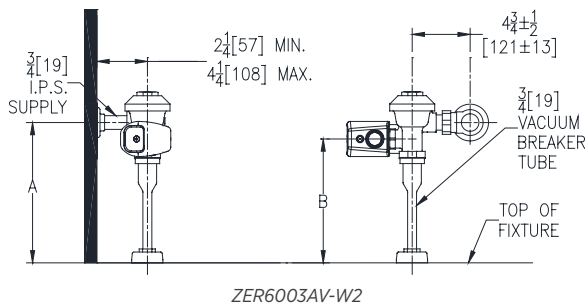
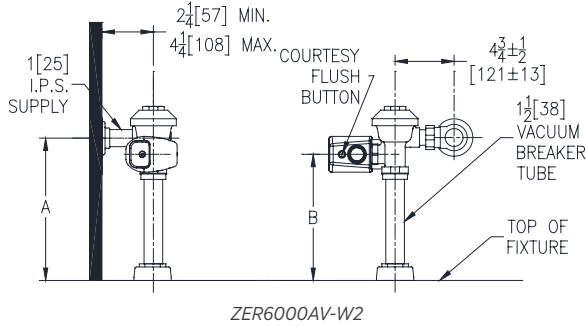


## Connect a Better Experience

- Keep toilets working and staff on task
- Create a cleaner, smarter restroom
- Leave a positive user impression

# Connected Battery ZER6000AV-W2 Series Sensor Flush Valve

## Rough-In Dimensions/Overview Dimensions



Includes four C batteries with a 3-year life.



CLOSET: **ZER6000AV-W2**  
**ZER6000PL-W2**



URINAL: **ZER6003AV-W2**  
**ZER6003PL-W2**

### CLOSET FLOW RATES

-ONE	1.1 gpf [4.1 Lpf]
-HET	1.28 gpf [4.8 Lpf]
-WS1	1.6 gpf [6.1 Lpf]

### URINAL FLOW RATES

-ULF	0.125 gpf [0.47 Lpf]
-EWS	0.5 gpf [1.9 Lpf]
-WS1	1.0 gpf [3.8 Lpf]



Zurn Gateway

### GATEWAY MODEL NUMBERS

-LTE	ZGW-LORA-W1-LTE
-Ethernet	ZGW-LORA-W1-ETH

## How It Works

Using sensors, Zurn Connected Flush Valves monitor performance and offer insights by gathering data, such as activations and water usage. The data collected gets communicated from the sensor to the Zurn Gateway. From there, the LAN or LTE\* connection transports the product data to a secure Zurn Cloud. The secure Zurn Cloud analyzes your data to deliver real-time insights to plumbSMART\*\*.

Facilities managers and maintenance personnel can receive alerts via email, text and/or push notifications based on their customizable parameters and permissions. The portal also reveals patterns and trends to allow for a deeper dive.

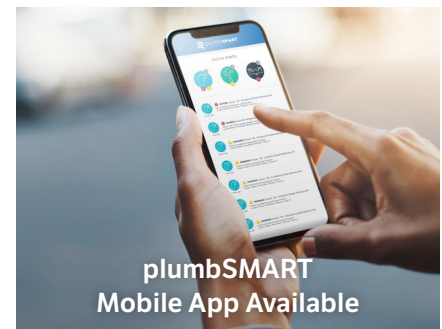
Install the Zurn Gateway within 1,000 feet from the connected product. Register the connected product in plumbSMART. The Zurn Gateway and plumbSMART can support your entire Zurn Connected Products portfolio.

\*LTE charges will apply to basic plans

\*\*plumbSMART is free-to-connect to a basic plan with an option to upgrade to a premium plan

# CONNECT A BETTER EXPERIENCE

For more information, visit [zurn.com/plumbSMART](https://zurn.com/plumbSMART)



plumbSMART  
Mobile App Available



App Store® and Apple logo® are registered trademarks of Apple Inc. Google Play and the Google Play logo are trademarks of Google LLC.

ZURN INDUSTRIES, LLC 511 West Freshwater Way, Milwaukee, WI 53204, 855.663.9876

In Canada: ZURN INDUSTRIES LIMITED 7900 Goreway Drive, Unit 10, Brampton, Ontario L6T 5W6, 877.892.5216

Form No. 900-030, 8/20



US 1.855.ONE.ZURN CANADA 1.877.892.5216 ZURN.COM