

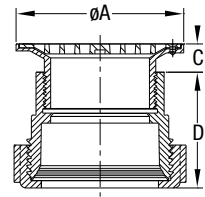
Z9A-FD1 ADJUSTABLE FLOOR DRAIN

Engineering Specification:

ZURN Z9A-FD1 ADJUSTABLE FLOOR DRAIN – Polypropylene body with bottom outlet and adjustable stainless steel strainer.

Options:

-F Fusion Lock; -M Mechanical Seal; -S Stab•Lock Seal



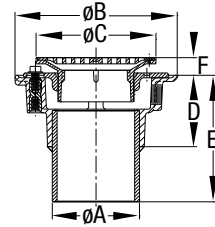
Model No.	Nom. Pipe Size	Dimensions in Inches [mm]			
		ϕA	D	C	
				Min.	Max.
Z9A-FD1-3	3 [76]	5-3/16 [132]	3-19/32 [91]	1 [25]	1-1/2 [38]
Z9A-FD1-4	4 [102]	5-3/16 [132]	3-11/16 [94]	1 [25]	1-1/2 [38]

Options	Description
-FN	4" [102] Round Stainless Steel Funnel
-VP	Vandal Proof

Z9A-FD2 ADJUSTABLE FLOOR DRAIN

Engineering Specification:

ZURN Z9A-FD2 ADJUSTABLE FLOOR DRAIN – Polypropylene body with plain end bottom outlet, polypropylene combination invertible membrane clamp with adjustable polypropylene head and stainless steel frame and grate.



Model No.	Nom. Pipe Size ϕA	Dimensions in Inches [mm]					
		ϕB	ϕC	D	E	F	
						Min.	Max.
Z9A-FD2-3	3 [76]	8-3/8 [213]	6 [152]	3-11/16 [94]	6-3/16 [157]	3/4 [19]	2-1/2 [64]
Z9A-FD2-4	4 [102]	8-3/8 [213]	6 [152]	3-13/16 [97]	6-5/16 [160]	3/4 [19]	2-1/2 [64]

Options	Description
-FN	4" [102] Round Stainless Steel Funnel
-P	1/2" [13] Trap Primer Connection
-R5	5" [127] Diameter Stainless Steel Top Assembly
-R7	7" [178] Diameter Stainless Steel Top Assembly
-R8	8" [203] Diameter Stainless Steel Top Assembly
-R10	10" [254] Diameter Stainless Steel Top Assembly
-SQ5	5" [127] Square Stainless Steel Top Assembly
-SQ6	6" [152] Square Stainless Steel Top Assembly
-SQ8	8" [203] Square Stainless Steel Top Assembly
-VP	Vandal Proof
-W	Winter Closure Plug
-Y	Stainless Steel Sediment Bucket