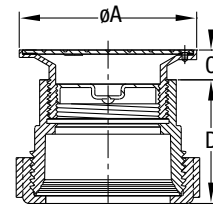


### Z9A-C01 ADJUSTABLE FLOOR CLEANOUT

**Engineering Specification:**

ZURN Z9A-C01 ADJUSTABLE FLOOR CLEANOUT – Polypropylene body with gas and water-tight taper plug complete with stainless steel top assembly with scoriated cover.



**Options:**

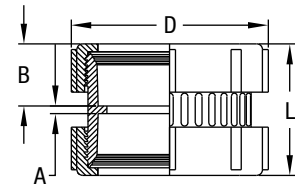
-F Fusion Lock; -M Mechanical Seal; -S Stab•Lock Seal

Model No.	Nom. Pipe Size	Dimensions in Inches [mm]			
		$\phi A$	D	C	
				Min.	Max.
Z9A-C01-3	3 [76]	5-3/16 [132]	3-19/32 [91]	1 [25]	1-1/2 [38]
Z9A-C01-4	4 [102]	5-3/16 [132]	3-11/16 [94]	1 [25]	1-1/2 [38]

### Z9A-C04 CLEANOUT BODY WITH PLUG

**Engineering Specification:**

ASTM-F1412, F.R.P.P. - 210  
ZURN Z9A-C04 CLEANOUT BODY WITH PLUG – Flame-retardant polypropylene coupling assembly with gas and water-tight polypropylene plug.



**Options:**

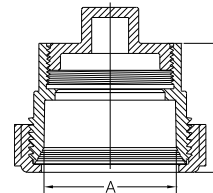
-F Fusion Lock; -M Mechanical Seal; -S Stab•Lock Seal

Model No.	Dimensions in Inches [mm]			
	A	B	D	L
Z9A-C04-112	5/32 [4]	1-1/16 [27]	3-1/32 [77]	2-1/4 [57]
Z9A-C04-2	1/8 [3]	1-9/32 [33]	3-17/32 [90]	2-5/8 [67]
Z9A-C04-3	3/16 [5]	2-3/32 [53]	5-21/64 [135]	4-3/8 [111]
Z9A-C04-4	1/4 [6]	2-1/8 [54]	6-3/8 [162]	4-1/2 [114]
Z9A-C04-6	1 [25]	2-5/32 [55]	8-19/32 [218]	4-19/32 [117]

### Z9A-C06 CLEANOUT

**Engineering Specification:** ASTM-F1412

ZURN Z9A-C06 CLEANOUT – Flame-retardant polypropylene body with gas and water-tight tapered polypropylene plug.



**Options:**

-F Fusion Lock; -M Mechanical Seal; -S Stab•Lock Seal

Model No.	Dimensions in Inches [mm]	
	A	D
Z9A-C06-112	1-1/2 [38]	2 [51]
Z9A-C06-2	2 [51]	2-7/32 [56]
Z9A-C06-3	3 [76]	3-19/32 [91]
Z9A-C06-4	4 [102]	3-11/16 [94]