

Z9-PVDF40 PVDF PIPE SCHEDULE 40

Engineering Specification:

ASTM-F1673, UL Classified
ZURN Z9-PVDF40 – Schedule 40 polyvinylidene fluoride pipe.

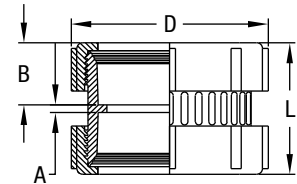


Model No.	Dimensions in Inches [mm]	
	Nom. Pipe Size	D
Z9-PVDF40-112	1-1/2 [38]	1-29/32 [48]
Z9-PVDF40-2	2 [51]	2-3/8 [60]
Z9-PVDF40-3	3 [76]	3-1/2 [89]
Z9-PVDF40-4	4 [102]	4-1/2 [114]

Z9A-PC PVDF COUPLING

Engineering Specification:

ASTM-F1673, UL Classified
ZURN Z9A-PC COUPLING – Polyvinylidene fluoride coupling assembly.



Options:

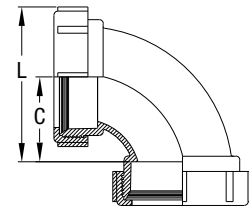
-F Fusion Lock; -M Mechanical Seal; -S Stab•Lock Seal

Model No.	Dimensions in Inches [mm]				
	Nom. Pipe Size	A	B	D	L
Z9A-PC-112	1-1/2 [38]	5/32 [4]	1-1/16 [27]	3-1/32 [77]	2-1/4 [57]
Z9A-PC-2	2 [51]	1/8 [3]	1-9/32 [33]	3-17/32 [90]	2-5/8 [67]
Z9A-PC-3	3 [76]	3/16 [5]	2-3/32 [53]	5-21/64 [135]	4-3/8 [111]
Z9A-PC-4	4 [102]	1/4 [6]	2-1/8 [54]	6-3/8 [162]	4-1/2 [114]

Z9A-PE90 PVDF 90° ELBOW

Engineering Specification:

ASTM-F1673, UL Classified
ZURN Z9A-PE90 90° ELBOW – Threaded x threaded polyvinylidene fluoride 90° elbow fitting.



Options:

-F Fusion Lock; -M Mechanical Seal; -S Stab•Lock Seal

Model No.	Dimensions in Inches [mm]		
	Nom. Pipe Size	C	L
Z9A-PE90-112	1-1/2 [38]	1-3/4 [44]	3-9/32 [83]
Z9A-PE90-2	2 [51]	2-5/16 [75]	4-3/32 [104]
Z9A-PE90-3	3 [76]	3 [76]	5-21/32 [144]
Z9A-PE90-4	4 [102]	3-7/8 [98]	7-1/16 [179]