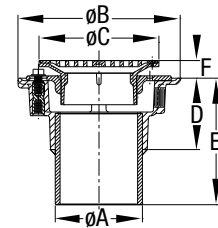


Z9A-PFD2 ADJUSTABLE FLOOR DRAIN

Engineering Specification:

ZURN Z9A-PFD2 ADJUSTABLE FLOOR DRAIN – Polypropylene body with plain end bottom outlet, polypropylene combination invertible membrane clamp with adjustable polypropylene head and stainless steel frame and grate.



Model No.	Dimensions in Inches [mm]						
	Nom. Pipe Size ϕA	ϕB	ϕC	D	E	F	
						Min.	Max.
Z9A-PFD2-3	3 [76]	8-3/8 [213]	6 [152]	3-11/16 [94]	6-3/16 [157]	3/4 [19]	2-1/2 [64]
Z9A-PFD2-4	4 [102]	8-3/8 [213]	6 [152]	3-13/16 [97]	6-5/16 [160]	3/4 [19]	2-1/2 [64]

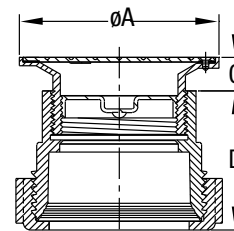
Options	Description	Options	Description
-FN	4" [102] Round Stainless Steel Funnel	-SQ5	5" [127] Square Stainless Steel Top Assembly
-P	1/2" [13] Trap Primer Connection	-SQ6	6" [152] Square Stainless Steel Top Assembly
-R5	5" [127] Diameter Stainless Steel Top Assembly	-SQ8	8" [203] Square Stainless Steel Top Assembly
-R7	7" [178] Diameter Stainless Steel Top Assembly	-VP	Vandal Proof
-R8	8" [203] Diameter Stainless Steel Top Assembly	-W	Winter Closure Plug
-R10	10" [254] Diameter Stainless Steel Top Assembly	-Y	Stainless Steel Sediment Bucket

Z9A-PC01 PVDF ADJUSTABLE CLEANOUT

Engineering Specification: ASTM-F1673, UL Listed
ZURN Z9A-PC01 PVDF ADJUSTABLE CLEANOUT – Polyvinylidene fluoride body with gas and water-tight taper plug complete with stainless steel top assembly with scoriated cover.

Options:

-F Fusion Lock; -M Mechanical Seal; -S Stab•Lock Seal



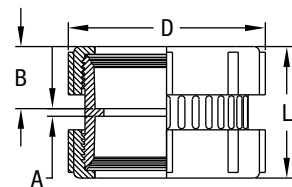
Model No.	Dimensions in Inches [mm]				
	Nom. Pipe Size	ϕA	D	C	
				Min.	Max.
Z9A-PC01-3	3 [76]	5-3/16 [132]	3-19/32 [91]	1 [25]	1-1/2 [38]
Z9A-PC01-4	4 [102]	5-3/16 [132]	3-11/16 [94]	1 [25]	1-1/2 [38]

Z9A-PC04 PVDF CLEANOUT BODY WITH PLUG

Engineering Specification: ASTM-F1673, UL Listed
ZURN Z9A-PC04 CLEANOUT BODY WITH PLUG – Polyvinylidene fluoride coupling assembly with gas and water-tight PVDF plug.

Options:

-F Fusion Lock; -M Mechanical Seal; -S Stab•Lock Seal



Model No.	Dimensions in Inches [mm]			
	A	B	D	L
Z9A-PC04-112	5/32 [4]	1-1/16 [29]	3-1/32 [77]	2-1/4 [57]
Z9A-PC04-2	1/8 [3]	1-9/32 [34]	3-17/32 [90]	2-5/8 [67]
Z9A-PC04-3	3/16 [5]	2-3/32 [53]	5-21/64 [135]	4-3/8 [111]
Z9A-PC04-4	1/4 [6]	2-1/8 [54]	6-3/8 [162]	4-1/2 [114]