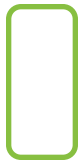




Specification Drainage



Leveling Drains and Cleanouts

Effortless Adjustment AFTER the Pour!



Labor Savings

- Virtually eliminates labor resulting from improperly set drains
- Offers effortless leveling and height adjustment after the concrete pour
- Eliminates complications with loose leveling shims

Innovative

- New patent-pending design improves sanitation through minimized pooling
- Allows 360° of quick and easy adjustment

Quality

- Meets ASME A112.6.3 and A112.36.2M standards
- Durable all-metal construction prolongs the life of the drain

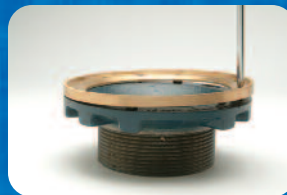
Adjustment



Remove strainer and loosen locking screws



Adjust height and level



Retighten locking screws

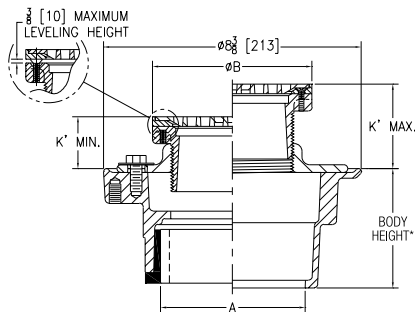


Secure strainer

Zurn Adjustable Leveling Drains

PATENT PENDING

Z415-BZ



Strainer Designation	Dimensions in Inches [mm]				Approx. Wt. Lbs. [kg]	Strainer Open Area Sq. In. [cm ²]
	A Pipe Size	B Strainer Diameter	K Min.	K' Max.		
-5BZ	2-3 [51,76]	5-3/16 [132]	1-1/16 [27]	2-13/16 [71]	11 [5]	8 [52]
-6BZ	2-3-4 [51,76,102]	6-1/4 [159]	1-3/8 [35]	2-15/16 [75]	13 [6]	9 [58]

* See outlets.

ENGINEERING SPECIFICATION: ZURN ZN415-BZ Floor and shower drain, Dura-Coated cast iron body with bottom outlet, combination invertible membrane clamp and adjustable collar with seepage slots and "TYPE BZ" polished nickel bronze, light-duty leveling strainer.

SUFFIXES

- AA All Acid Resisting Epoxy
- AR Acid Resisting Epoxy Coated Cast Iron
- CP Chrome-Plated Bronze Top
- DC Debris Cover
- DP Decorative Polished Top
- G Galvanized Cast Iron
- OF Oval Funnel (Z329-7) (6" [152] Strainer Only)
- P Trap Prime Connection (Specify 1/2" [13] or 3/4" [19])
- SA Stabilizer Assembly (see Z1035)
- SQ Stabilizer Q-Deck (see Z1035-Q)
- SR Stabilizer Ring (See Z400-SR)
- TC Neo-Loc Test Cap Gasket (2"- 4" [51-102] NL Outlet Only)
- U 1"-3" [25-76] High Extension Adapter
- V Backwater Valve
- VP Vandal-Proof Secured Top
- Y Sediment Bucket
- 4 4" [102] Diameter Funnel (Z328)
- 90 90° Threaded Side Outlet Body Assembly (2" [51] and 3" [76] Only)

Z415-BZ Options

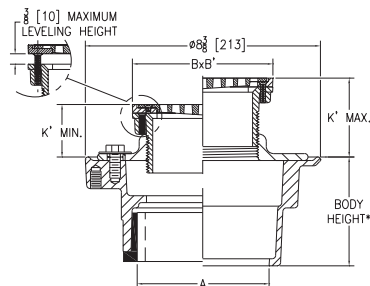
OUTLETS (Specify pipe size in inches and type of outlet.)

OUTLET TYPE	DESIGNATION Pipe Size/Outlet Type	BODY HEIGHT
Inside Caulk	2IC, 3IC, 4IC	3-7/8 [98]
Inside Gasket	2IG, 3IG, 4IG	3-7/8 [98]
Threaded	2IP	2-3/8 [60]
Threaded	3IP	2-5/8 [67]
Threaded	4IP	2-7/8 [73]
No-Hub	2NH, 3NH, 4NH	3-7/8 [98]
Neo-Loc	2NL, 3NL, 4NL	3-3/4 [95]

PREFIXES

- ZB D.C.C.I. Body Assembly with Polished Bronze Top
- ZN D.C.C.I. Body Assembly with Polished Nickel Bronze Top*

Z415-SZ



Strainer Designation	Dimensions in Inches [mm]				Approx. Wt. Lbs. [kg]	Strainer Open Area Sq. In. [cm ²]
	A Pipe Size	B x B' Str. Top Size	K Min.	K' Max.		
-5SZ	2-3 [51,76]	5 [127] x 5 [127]	1-11/16 [43]	2-13/16 [71]	11 [5]	8 [52]
-6SZ	2-3-4 [51,76,102]	6 [152] x 6 [152]	1-11/16 [43]	2-13/16 [71]	13 [6]	13 [84]

* See outlets.

ENGINEERING SPECIFICATION: ZURN ZN415-SZ Floor and shower drain, Dura-Coated cast iron body with bottom outlet, combination invertible membrane clamp, and adjustable collar with seepage slots, and "TYPE SZ" polished nickel bronze, light-duty, square leveling strainer.

SUFFIXES

- AA All Acid Resisting Epoxy
- AR Acid Resisting Epoxy Coated Cast Iron
- CP Chrome-Plated Bronze Top
- DC Debris Cover
- DP Decorative Polished Top
- G Galvanized Cast Iron
- P Trap Primer Connection (Specify 1/2" [13] or 3/4" [19])
- SA Stabilizer Assembly (See Z1035)
- SQ Stabilizer Q-Deck (See Z1035-Q)
- SR Stabilizer Ring (See Z400-SR)
- TC Neo-Loc Test Cap Gasket (2"- 4" [51-102] NL Outlet Only)
- U 1"-3" [25-76] High Extension Adapter
- V Backwater Valve
- VP Vandal-Proof Secured Top
- Y Sediment Bucket
- 90 90° Threaded Side Outlet Body (2" [51] and 3" [76] Only)

Z415-SZ Options

OUTLETS (Specify pipe size in inches and type of outlet.)

OUTLET TYPE	DESIGNATION Pipe Size/Outlet Type	BODY HEIGHT
Inside Caulk	2IC, 3IC, 4IC	3-7/8 [98]
Inside Gasket	2IG, 3IG, 4IG	3-7/8 [98]
Threaded	2IP	2-3/8 [60]
Threaded	3IP	2-5/8 [67]
Threaded	4IP	2-7/8 [73]
No-Hub	2NH, 3NH, 4NH	3-7/8 [98]
Neo-Loc	2NL, 3NL, 4NL	3-3/4 [95]

PREFIXES

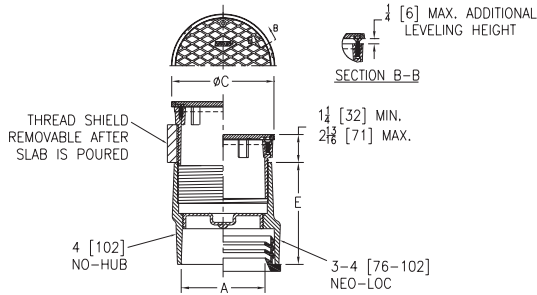
- ZB D.C.C.I. Body Assembly with Polished Bronze Top
- ZN D.C.C.I. Body Assembly with Polished Nickel Bronze Top*
- ZS D.C.C.I. Body Assembly with Polished Type 304 (CF8) Stainless Steel Top

* Regularly furnished unless otherwise specified.

Zurn Adjustable Leveling Cleanouts



Z1400-BZ



	Dimensions in Inches [mm]			Approx. Wt Lbs. [kg]
	A Pipe Size	C	E	
No-Hub	4 [102]	5-1/32 [128]	4-3/4 [121]	10.3 [4.7]
Neo-Loc	3 [76]	5-1/32 [128]	4-3/4 [121]	10.6 [4.8]
	4 [102]	5-1/32 [128]	4-3/4 [121]	11.9 [5.4]

ENGINEERING SPECIFICATION: ZURN Z1400-BZ “Level-Trol” Adjustable leveling floor cleanout, Dura-Coated cast iron body, with gas and watertight ABS tapered thread plug, and round scoriated secured light-duty top (Specify finish ZB, ZN, or ZS) with additional leveling adjustment to finished floor.

Z1400-BZ Options

OUTLETS (Specify pipe size in inches and type of outlet.)

OUTLET TYPE	DESIGNATION Pipe Size/Outlet Type	BODY HEIGHT
No-Hub	4NH	See Chart
Neo-Loc	3NL, 4NL	See Chart

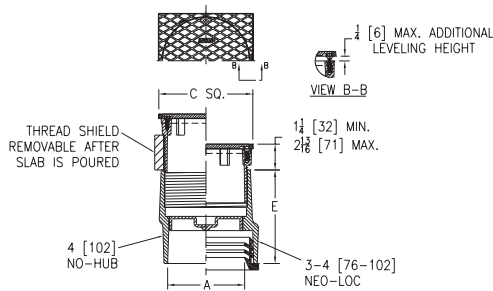
PREFIXES

- ZB** D.C.C.I. with Polished Bronze Top
- ZN** D.C.C.I. with Polished Nickel Bronze Top
- ZS** D.C.C.I. with Polished Type 304 (CF8) Stainless Steel Top

SUFFIXES

- AR** Acid Resisting Epoxy Coated Finish
- BP** Bronze Plug
- CM** Carpet Marker
- G** Galvanized Cast Iron
- SM** Special Marking Stamped on Top
- VP** Vandal-Proof Screws

Z1400-SZ



	Dimensions in Inches [mm]			Approx. Wt Lbs. [kg]
	A Pipe Size	C	E	
No-Hub	4 [102]	5-1/32 [128]	4-3/4 [121]	10.5 [4.8]
Neo-Loc	3 [76]	5-1/32 [128]	4-3/4 [121]	10.8 [4.9]
	4 [102]	5-1/32 [128]	4-3/4 [121]	12.1 [5.5]

ENGINEERING SPECIFICATION: ZURN Z1400-SZ “Level-Trol” Square adjustable leveling floor cleanout, Dura-Coated cast iron body, with gas and watertight ABS tapered thread plug, and round scoriated secured light-duty top and square veneer frame (Specify finish ZB, ZN, or ZS) with additional leveling adjustment to finished floor.

Z1400-SZ Options

OUTLETS (Specify pipe size in inches and type of outlet.)

OUTLET TYPE	DESIGNATION Pipe Size/Outlet Type	BODY HEIGHT
No-Hub	4NH	See Chart
Neo-Loc	3NL, 4NL	See Chart

PREFIXES

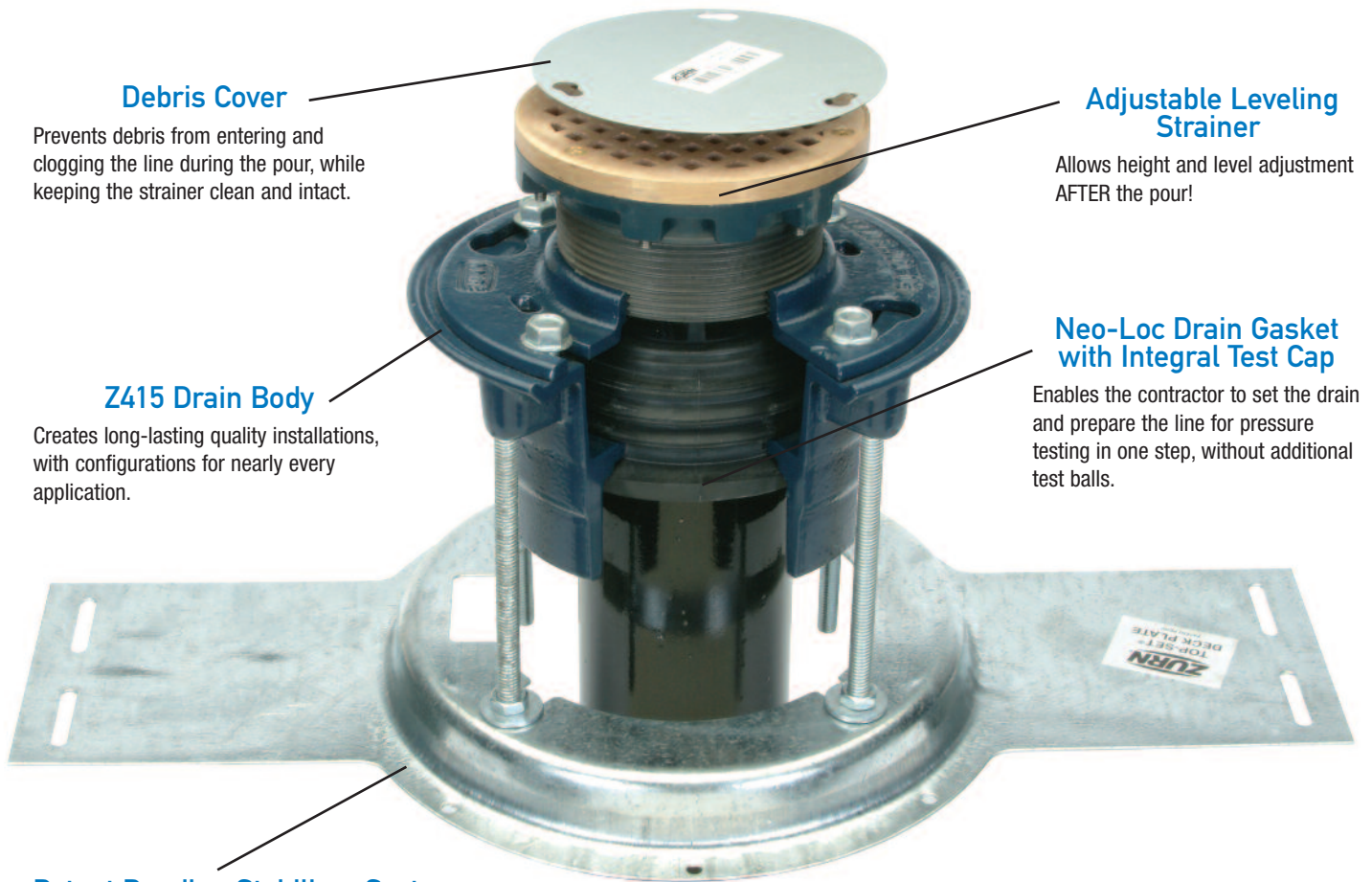
- ZB** D.C.C.I. with Polished Bronze Top
- ZN** D.C.C.I. with Polished Nickel Bronze Top
- ZS** D.C.C.I. with Polished Type 304 (CF8) Stainless Steel Top

SUFFIXES

- AR** Acid Resisting Epoxy Coated Finish
- BP** Bronze Plug
- CM** Carpet Marker
- G** Galvanized Cast Iron
- SM** Special Marking Stamped on Top
- VP** Vandal-Proof Screws

□ Zurn Innovative Drainage Solutions

Discover how easy it is to reduce installation time, avoid costly rework, and ensure high quality installations with innovative solutions by Zurn. These exclusive features, combined with over 100 years of performance engineered products, create the most comprehensive plumbing package available.



Debris Cover

Prevents debris from entering and clogging the line during the pour, while keeping the strainer clean and intact.

Adjustable Leveling Strainer

Allows height and level adjustment AFTER the pour!

Z415 Drain Body

Creates long-lasting quality installations, with configurations for nearly every application.

Neo-Loc Drain Gasket with Integral Test Cap

Enables the contractor to set the drain and prepare the line for pressure testing in one step, without additional test balls.

Patent Pending Stabilizer System

Provides the opportunity to pre-assemble the drain to a known rough-in height away from the job. Plate-type stabilizer systems create an open pocket on the underside of the plate allowing the waste line piping to be attached after the pour. Every Zurn stabilizer system improves the installation by keeping the drain-set rigid and level throughout the pour, saving valuable time and labor costs.



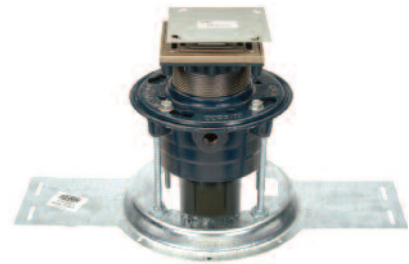
Z400-SR

Designed for use in slab-on-grade construction, securing the drain to the pipe.



Z1035

Engineered for use in fly-form construction, structural decking and wooden sub-floor applications.



Z1035-Q

Ideal for Q-deck applications with varied ridge widths and structural decking.