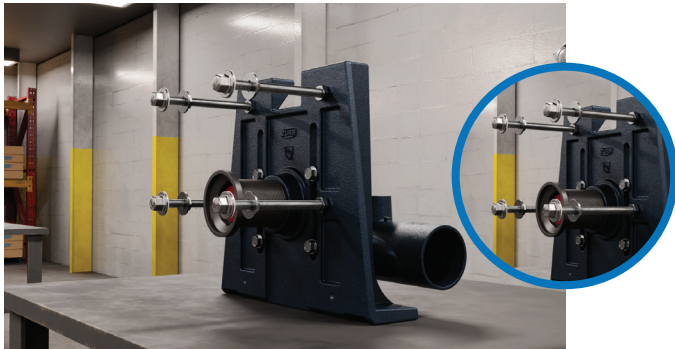


# ZF1201-U One-Piece Faceplate Carrier Install Methods

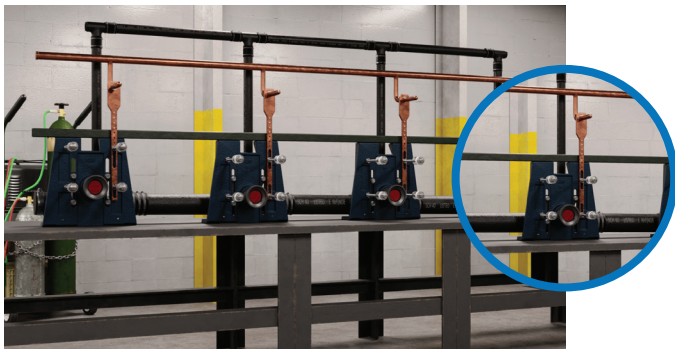
## A NEW CONTRACTOR FAVORITE



Single Unit Installation



Angle Iron Installation



Strut Bank Installation

### Features

- Enables multiple prefabrication methods using strut channel or angle iron
- Parabolic gussets provide ample room for customer tooling
- Connection point spacing allows for universal adjustment of strut channel
- Machine threaded hole design enhances contractor safety and protects product during transportation



Scan for  
installation videos

**LABOR SAVINGS**

**EASE OF INSTALLATION**

**CONTRACTOR SAFETY**