

# AQUASPEC<sup>®</sup> FAUCETS

MODEL - Z83100-ICT SERIES  
WIDESPREAD



## TECHNICAL INFORMATION

---

**FLOW:** 2 GPM [7.6 L] PRESSURE COMPENSATING AERATOR \*

**MAXIMUM PRESSURE:** 125 PSI

**MAXIMUM TEMPERATURE:** 180 °F

**HANDLE NUT TORQUE:** 15-20 FT - LBS.

**CARTRIDGE STYLE:** QUARTER TURN CERAMIC DISK  
(CAN USE ZURN METERING CARTRIDGE)

\* OTHER AERATORS AVAILABLE BY REQUEST

---

## INSTALLATION INSTRUCTIONS

1. PLACE GASKET (ITEM #3D) ONTO SHANK OF BASE ASS'Y. (ITEM #6). PLACE BASE ASS'Y. THROUGH CENTER HOLE OF SINK AND SECURE TO SINK USING WASHER (ITEM #3E), LOCKWASHER (ITEM #3F) AND FLANGED MOUNTING NUT (ITEM #3G).
2. REMOVE BODY ASS'Y. (ITEM #7) FROM PACKAGING AND PLACE SHANK NUT (ITEM #3K), FRICTION WASHER (ITEM #3J) AND SHANK SEAL (ITEM #3H) ONTO CENTER FITTING OF BODY ASS'Y. PLACE NUT (ITEM #7A) AND WASHER (ITEM #3C) ONTO END FITTINGS. SCREW NUTS ALL THE WAY DOWN ON THREADS.
3. PLACE BODY ASS'Y. (ITEM #8) INTO SINK FROM UNDERSIDE AND PLACE WASHER (ITEM #3B) AND RETAINING RING (ITEM #3A) ONTO SHANKS ABOVE SINK TOP.
4. TIGHTEN NUTS (ITEM #7A) TO SECURE ASSEMBLY TO SINK. **DO NOT OVER TIGHTEN.**
5. TIGHTEN CENTER SHANK NUT (ITEM #3K) TO SECURE CENTER FITTING TO BASE.
6. INSTALL SPOUT INTO BASE AND TIGHTEN NUT (SEE VIEWS FOR SWING/RIGID CONNECTION). INSTALL ESCUTCHEONS (ITEM #1) OVER END FITTINGS. SCREW HANDLES ONTO CARTRIDGE STEMS AND INSERT INDEX BUTTONS.
7. ATTACH LAVATORY SUPPLIES TO FAUCET USING RISER NUT (ITEM #8).
8. OPTIONAL - POP-UP (-P)/GRID STRAINER (-G)/HANDICAP OFFSET GRID DRAIN (-GH) INSTALL POP-UP OR GRID STRAINER IN SINK OUTLET AND PLUMB WASTE CONNECTION.
9. INSTALL AERATOR INTO FAUCET AND HAND TIGHTEN. IT MAY BE NECESSARY TO UNSCREW AND CLEAN AERATOR AT START-UP.
10. TURN WATER SUPPLY ON AND OPERATE FAUCET CHECKING FOR LEAKS.
11. IT MAY BE NECESSARY TO SHUT WATER OFF AND REMOVE CARTRIDGES TO CLEAN SUPPLY LINES. CARTRIDGES CAN BE REMOVED BY FIRST REMOVING THE HANDLES. COLOR INDEXES CAN BE REMOVED BY INSERTING A PIN INTO THE HOLE ON THE UNDERSIDE OF THE HANDLE. AFTER THE HANDLES HAVE BEEN REMOVED, UNSCREW ESCUTCHEONS (ITEM #1) AND REMOVE THE CARTRIDGE CAPS (ITEM #2). PULL UP ON THE CARTRIDGE. ZURN WILL SUPPLY HANDLE PORT PLUGS (ZURN PART #61094001) AT YOUR REQUEST.
12. REPLACE CARTRIDGES IN BODY AND HAND TIGHTEN CARTRIDGE CAPS. PLACE HANDLES ON THE CARTRIDGE STEM AND LOCATE THEM AS DESIRED. TIGHTEN CARTRIDGE CAPS.
13. REPLACE HANDLE SCREWS AND COLOR INDEX BUTTONS.

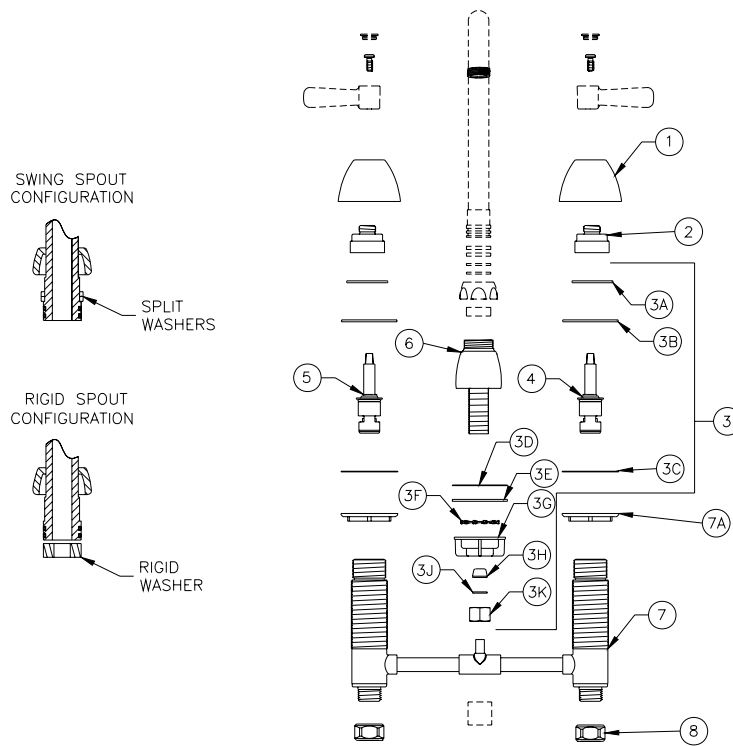
# MAINTENANCE

1. YOUR ZURN AQUASPEC FAUCET HAS A HIGHLY POLISHED NICKEL CHROME PLATED FINISH. CLEAN WITH SOAP AND WATER OR A MILD CLEANER WHICH IS SAFE FOR CHROME PLATING. DO NOT USE ACIDS OR TOILET BOWL CLEANER AS THEY WILL DAMAGE THE FINISH.
2. AQUASPEC FAUCETS CONTAIN CERAMIC DISK CARTRIDGES WHICH REQUIRE NO MAINTENANCE. TO REMOVE THE CARTRIDGE, SHUT THE WATER OFF, LOOSEN THE HANDLE NUTS AND PULL UP ON THE CARTRIDGE.

# REPLACEMENT PARTS

COLD WATER CARTRIDGE	59517003
HOT WATER CARTRIDGE	59517004
INDEX BUTTONS	G60500

## Z831A1-ICT PICTURED



## Z83100-ICT PARTS LIST

ITEM	QTY	ITEM	QTY
1	60078001	ESCUTCHEON	2
2	60077001	CARTRIDGE CAP	2
3	G61080	MOUNTING HARDWARE	1
3A	60383002	RETAINING RING	2
3B	60382001	WASHER	2
3C	60444001	WASHER	2
3D	60148002	GASKET	1
3E	65340001	WASHER	1
3F	61613019	TOOTHED LOCKWASHER	1
3G	59530003	FLANGED MOUNTING NUT	1
3H	60144001	SHANK SEAL	1
3J	60399001	FRICTION WASHER	1
3K	60145001	SHANK NUT	1
4	59517003	LONG COLD CARTIDGE	1
5	59517004	LONG HOT CARTIDGE	1
6	60453003	BASE ASS'Y.	1
7	60378001	VALVE BODY ASS'Y.	1
7A	60445001	NUT	2
8	59532001	1/2" [13] NPSM RISER NUT	2

**ZURN INDUSTRIES, INC.**  
 COMMERCIAL BRASS OPERATIONS  
 2640 SOUTH WORK STREET  
 FALCONER, N.Y. 14733  
 PHONE: 1-716-665-1132 FAX: 1-716-665-1135  
 WORLD WIDE WEB: www.zurn.com



Form # CF95 Date: 10/12/05  
 C.N. No. 103194 Rev. G