



# Z400-SR

## FLOOR DRAIN STABILIZER RING

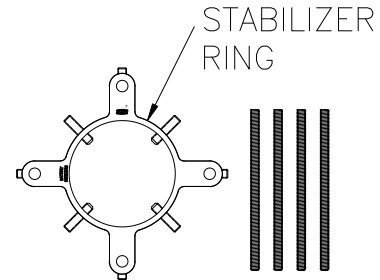
### INSTALLATION INSTRUCTIONS FOR

#### USE W/ 8-3/8 [213] DIAMETER DRAIN BODY

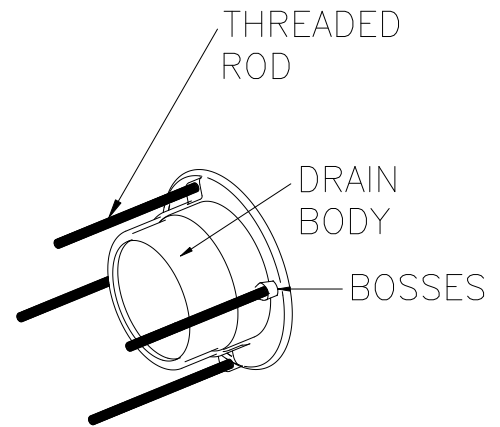
Dimensional Data (inches and [mm]) are Subject to Manufacturing Tolerances and Change Without Notice

## PRE-ASSEMBLY VERSION

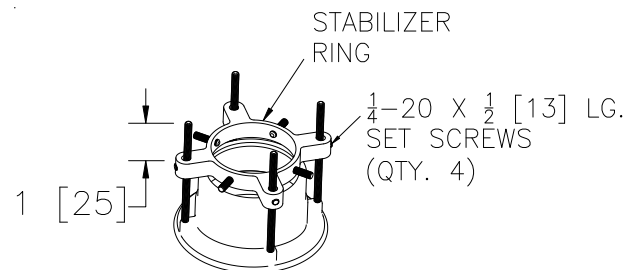
**Step 1:** Open the parts bag and check components. The bag should contain one stabilizer ring with all of the set screws installed and four (4) loose 3/8-16 x 7 [178] long threaded rods.



**Step 2:** Screw each of the four (4) threaded rods into each of the four (4) drilled and tapped bosses on the underside of the drain body.



**Step 3:** Obtain and position the stabilizer ring, aligning the four (4) holes in the bosses of the stabilizer ring with the four (4) threaded rods. Slide the stabilizer ring down onto the threaded rods until 1 [25] inch of each threaded rod is sticking through the stabilizer ring. Hold the stabilizer ring level and securely tighten all four (4) of the shorter (1/4-20 x 1/2 [13] lg.) set screws in each of the four (4) bosses against the threaded rods. The threaded rods will now be held securely in each boss.



**⚠️ WARNING:** Cancer and Reproductive Harm - [www.P65Warnings.ca.gov](http://www.P65Warnings.ca.gov)

**⚠️ ADVERTENCIA:** Cáncer y daño reproductivo - [www.P65Warnings.ca.gov](http://www.P65Warnings.ca.gov)

**⚠️ AVERTISSEMENT:** Cancer et effets néfastes sur la reproduction - [www.P65Warnings.ca.gov](http://www.P65Warnings.ca.gov)

Zurn Industries, LLC | Specification Drainage Operation  
1801 Pittsburgh Avenue, Erie, PA U.S.A. 16502 · Ph. 855-663-9876, Fax 814-454-7929

In Canada | Zurn Industries Limited  
3544 Nashua Drive, Mississauga, Ontario L4V 1L2 · Ph. 905-405-8272, Fax 905-405-1292

[www.zurn.com](http://www.zurn.com)

Rev. B  
Date: 04/06/2018  
C.N. No. 139849  
Form No. FD77



# Z400-SR

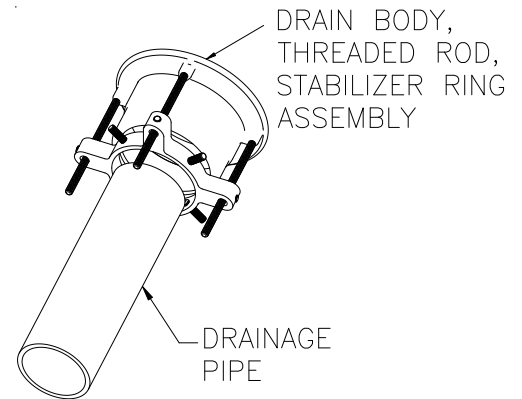
## FLOOR DRAIN STABILIZER RING

### INSTALLATION INSTRUCTIONS FOR

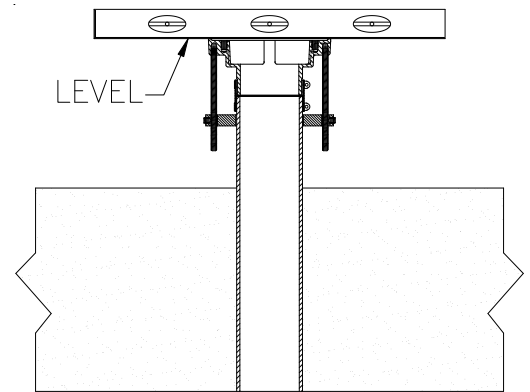
#### USE W/ 8-3/8 [213] DIAMETER DRAIN BODY

Dimensional Data (inches and [mm]) are Subject to Manufacturing Tolerances and Change Without Notice

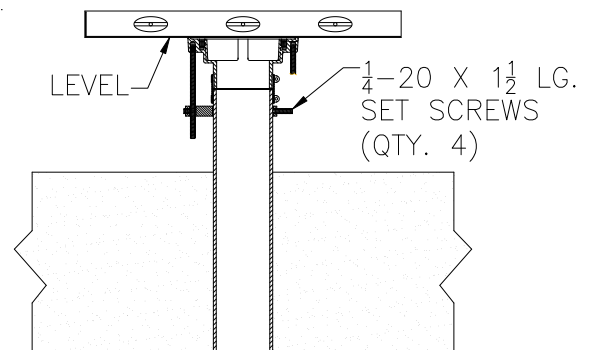
**Step 4:** Position the drain body onto the drainage pipe with the drainage pipe passing through the stabilizer ring. Attach the outlet of the drain body to the drainage pipe.



**Step 5:** Hold the drain body level in all directions.



**Step 6:** Using an allen wrench, securely tighten all four (4) longer (1/4-20 x 1 1/2 [38] lg.) set screws so the stabilizer ring holds its position on the drainage pipe. Re-check the drain body to make sure it remained level. If it is not level, then loosen the four (4) shorter (1/4-20 x 1/2 [13] lg.) set screws, level the drain body and retighten screws.





# Z400-SR

## FLOOR DRAIN STABILIZER RING

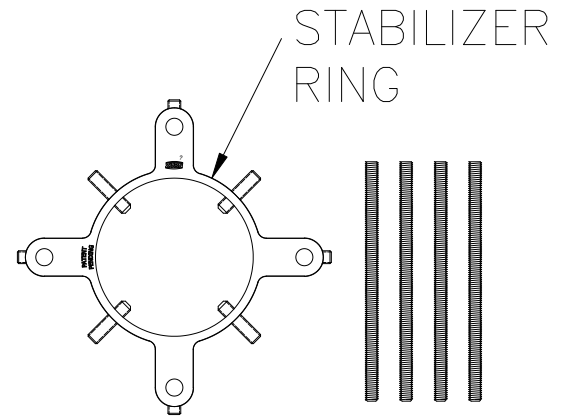
### INSTALLATION INSTRUCTIONS FOR

#### USE W/ 8-3/8 [213] DIAMETER DRAIN BODY

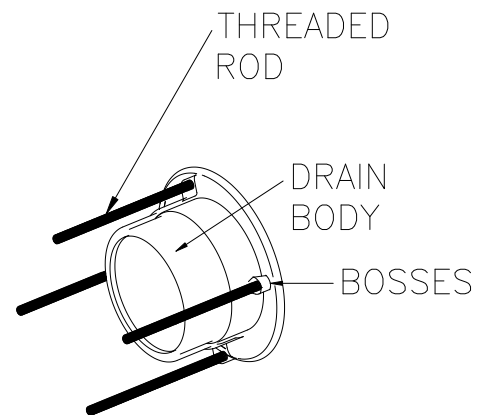
Dimensional Data (inches and [mm]) are Subject to Manufacturing Tolerances and Change Without Notice

## FIELD ASSEMBLY VERSION

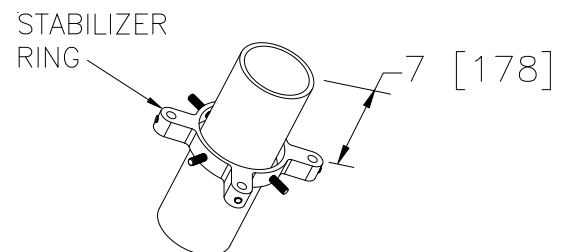
**Step 1:** Open the parts bag and check components. The bag should contain one stabilizer ring with all of the set screws installed and four (4) loose 3/8-16 x 7 [178] long threaded rods.



**Step 2:** Screw each of the four (4) threaded rods into each of the four (4) drilled and tapped bosses on the underside of the drain body.



**Step 3:** Slide the stabilizer ring over the drainage pipe and down approximately 7 [178] inches. Hand tighten the four (4) longer (1/4-20 x 1 1/2 [38] lg.) set screws so that the stabilizer ring holds its position on the drainage pipe.





# Z400-SR

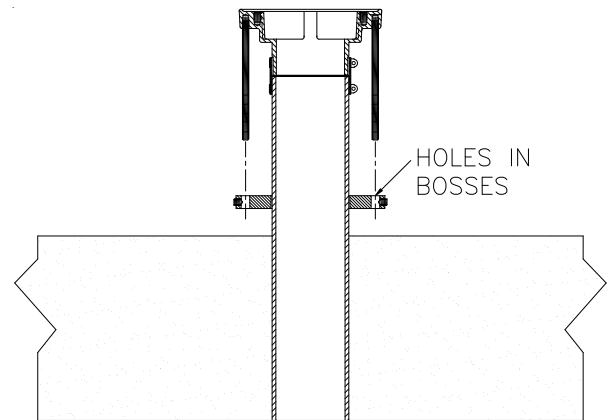
## FLOOR DRAIN STABILIZER RING

### INSTALLATION INSTRUCTIONS FOR

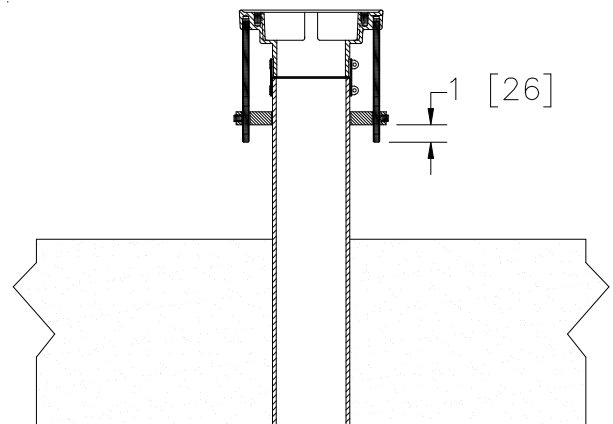
#### USE W/ 8-3/8 [213] DIAMETER DRAIN BODY

Dimensional Data (inches and [mm]) are Subject to Manufacturing Tolerances and Change Without Notice

**Step 4:** Position the drain body onto the drainage pipe, attaching the outlet of the drain body to the drainage pipe. At the same time align the four (4) threaded rods with and into the four (4) holes in the stabilizer ring bosses.



**Step 5:** If the position of the stabilizer ring must move up or down on the drainage pipe, loosen the hand tightened longer (1/4-20 x 1 1/2 [38] lg.) set screws and slide the stabilizer ring up or down until approximately 1 [25] inch of the threaded rod is showing below the stabilizer ring. Hold the stabilizer ring level and now securely re-tighten all four (4) of the longer (1/4-20 x 1 1/2 [38] lg.) set screws using an allen wrench.



**Step 6:** Hold the drain body level. Using an allen wrench, securely tighten all four (4) shorter (1/4-20 x 1/2 [13] lg.) set screws in each of the four (4) bosses against the threaded rod. The threaded rod will now be held securely in each boss. Re-check the drain body to make sure it remained level. If it is not level, then loosen the four (4) shorter (1/4-20 x 1/2 [13] lg.) set screws, make the drain body level again and retighten screws.

