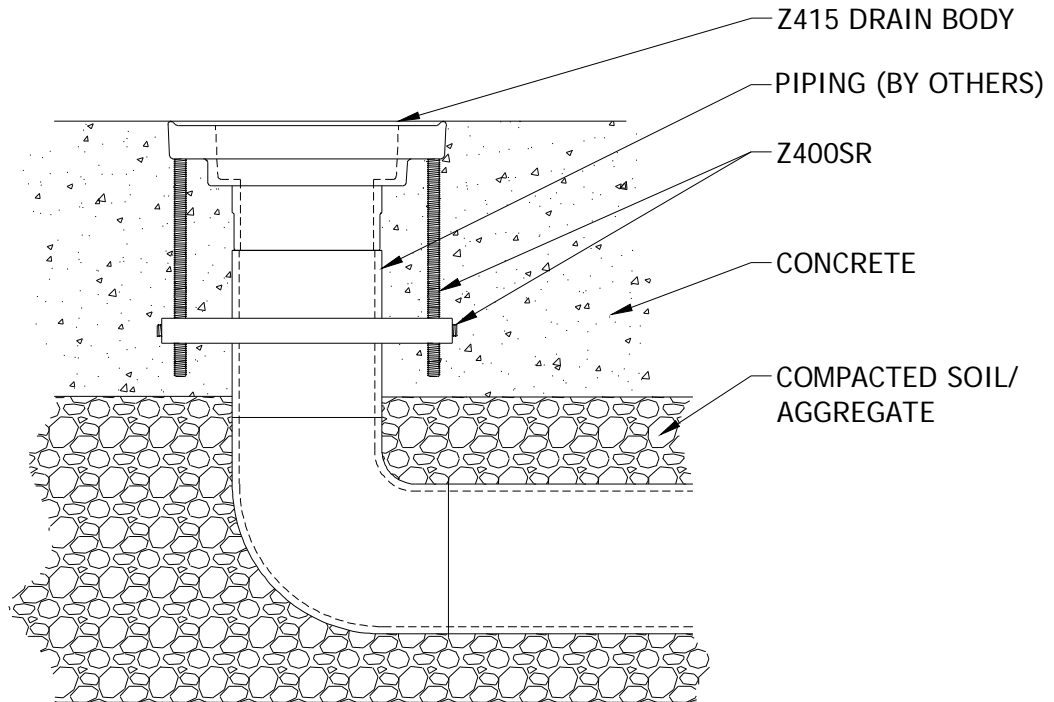




# Z400SR WITH FLOOR DRAIN TYPICAL INSTALLATION

Dimensional data (inches and [mm]) are subject to manufacturing tolerances and change without notice.



Attach threaded rods of Z400SR to underside threaded bosses of the drain body. Feed rods through the (4) holes of the Z400SR plate and hand tighten set screws at desired length. Attach drain body and Z400SR assembly to pipe stub and tighten set screws against pipe. Adjust threaded rods and set screws until drain is firmly attached to pipe and level. Pour structural slab to top surface of drain body.

**⚠️ WARNING:** Cancer and Reproductive Harm - [www.P65Warnings.ca.gov](http://www.P65Warnings.ca.gov)

**⚠️ ADVERTENCIA:** Cáncer y daño reproductivo - [www.P65Warnings.ca.gov](http://www.P65Warnings.ca.gov)

**⚠️ AVERTISSEMENT:** Cancer et effets néfastes sur la reproduction - [www.P65Warnings.ca.gov](http://www.P65Warnings.ca.gov)

\*Regularly furnished unless otherwise specified.

**Zurn Industries, LLC | Specification Drainage Operation**  
1801 Pittsburgh Avenue, Erie, PA U.S.A. 16502 · Ph. 855-663-9876, Fax 814-454-7929  
In Canada | **Zurn Industries Limited**  
3544 Nashua Drive, Mississauga, Ontario L4V 1L2 · Ph. 905-405-8272, Fax 905-405-1292  
[www.zurn.com](http://www.zurn.com)

Rev. A  
Date: 6/22/2018  
C.N. No. 140205  
Form No. FD87