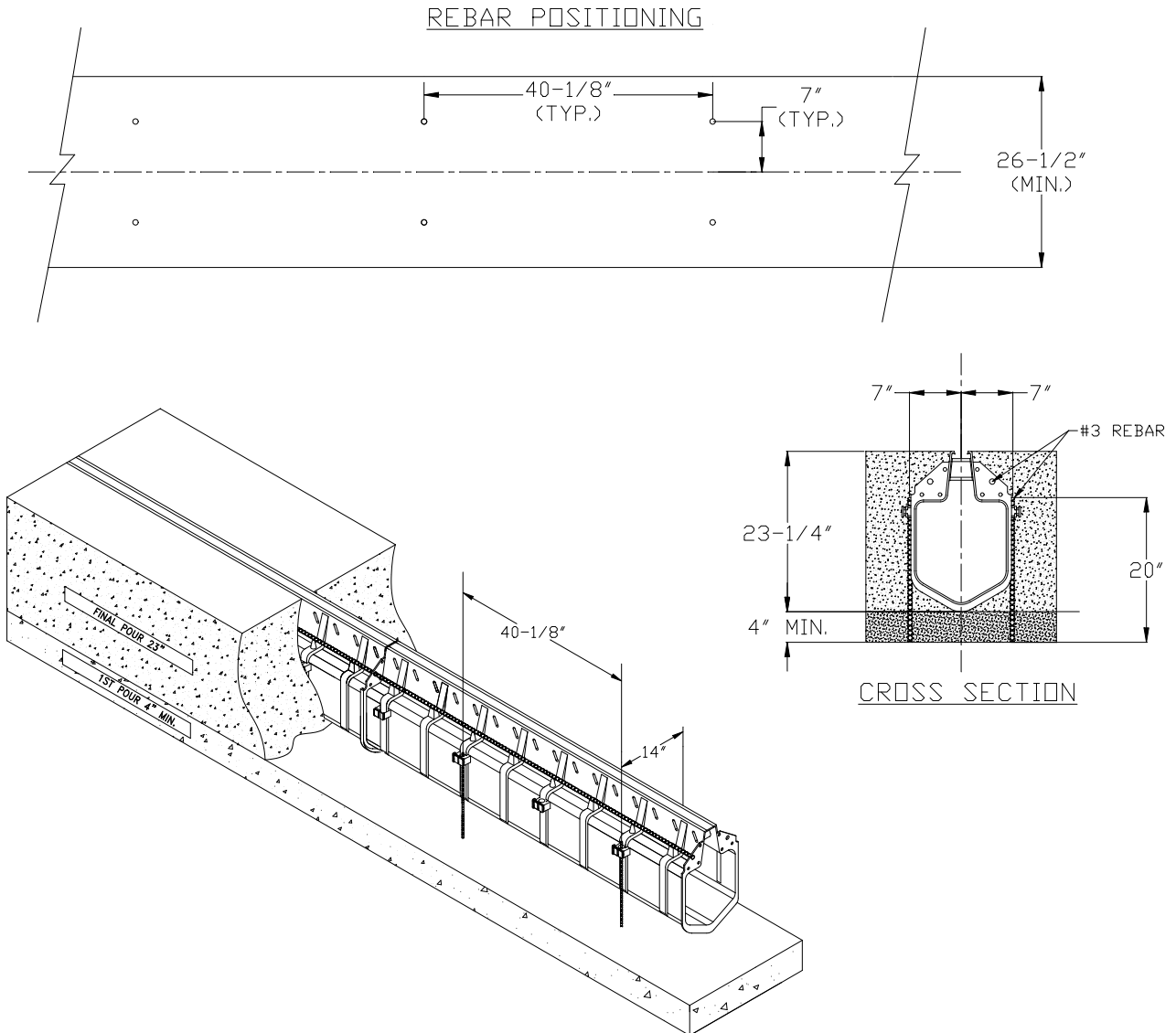




Z888-18
SPECIAL INSTALLATION



Special Installation: A minimum concrete base of 2000psi, minimum depth of 4", and width of 26.5" must be cast with two #4(1/2") re-bar spaced on 40-1/8" intervals along the channels flow direction and 7" on either side of the centerline of the channel. Set the initial pour to final grade minus 23-1/4". Install the channels onto the re-bar starting at the outlet, working to the beginning of the run (upstream). Using the pre-formed re-bar clips on the Hi-Cap slotted drainage system to hold the channel into position and attach the supplied re-bar clip fastening hardware to lock the system and keep it from floating during the final concrete pour.

- ⚠ **WARNING:** Cancer and Reproductive Harm - www.P65Warnings.ca.gov
- ⚠ **ADVERTENCIA:** Cáncer y daño reproductivo - www.P65Warnings.ca.gov
- ⚠ **AVERTISSEMENT:** Cancer et effets néfastes sur la reproduction - www.P65Warnings.ca.gov