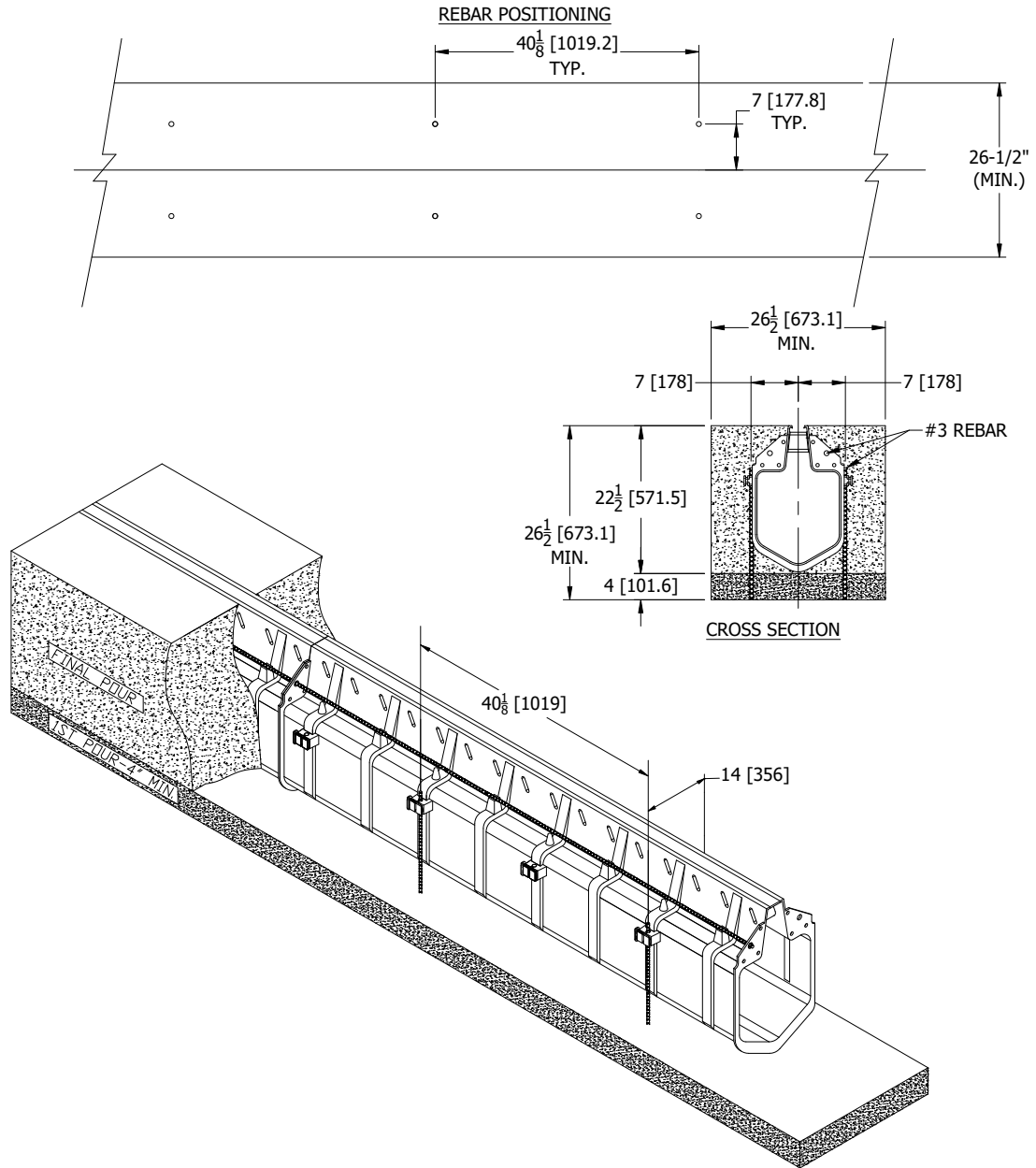




Z888-18

SPECIAL INSTALLATION

Dimensional data (inches and [mm]) are subject to manufacturing tolerances and change without notice.



Special Installation:

A minimum concrete base of 2000psi, minimum depth of 4" [102mm], and width of 26.5" [673mm] must be cast with two #4 (1/2" [13mm]) re-bar spaced on 40-1/8" [1019mm] intervals along the channels flow direction and 7" [178mm] on either side of the centerline of the channel. Set the initial pour to final grade minus 22-1/2" [572mm]. Install the channels onto the re-bar starting at the outlet, working to the beginning of the run (upstream). Using the pre-formed re-bar clips on the Hi-Cap slotted drainage system to hold the channel into position and attach the supplied re-bar clip fastening hardware to lock the system and keep it from floating during the final concrete pour.

⚠ WARNING: Cancer and Reproductive Harm - www.P65Warnings.ca.gov

⚠ ADVERTENCIA: Cáncer y daño reproductivo - www.P65Warnings.ca.gov

⚠ AVERTISSEMENT: Cancer et effets néfastes sur la reproduction - www.P65Warnings.ca.gov

Zurn Industries, LLC | Specification Drainage Operation
 1801 Pittsburgh Avenue, Erie, PA U.S.A. 16502 · Ph. 855-663-9876, Fax 814-454-7929
 In Canada | Zurn Industries Limited
 3544 Nashua Drive, Mississauga, Ontario L4V 1L2 · Ph. 905-405-8272, Fax 905-405-1292
www.zurn.com

Rev. A
 Date: 5/21/2018
 C.N. No. 140046
 Form No. FT772