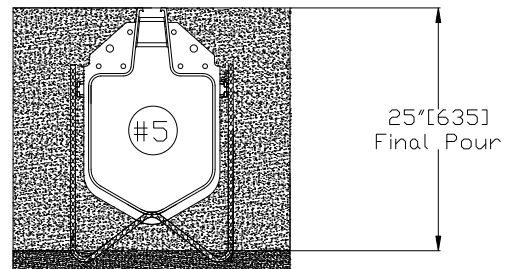
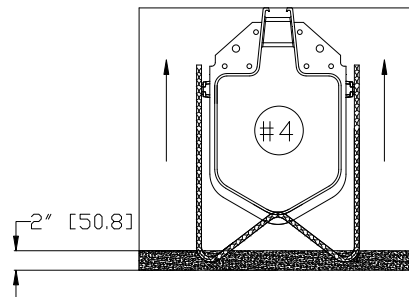
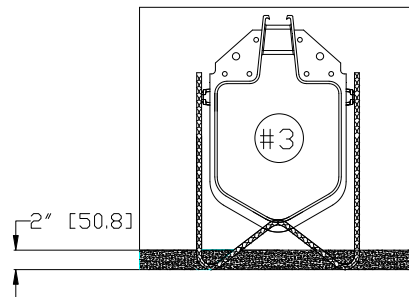
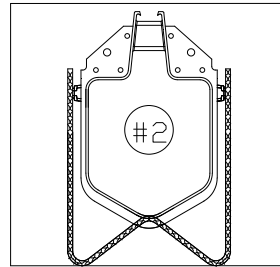
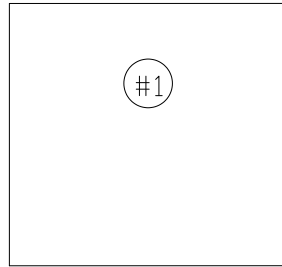




# Z888-18 BEDDING BRACKET INSTALLATION

Dimensional data (inches and [mm]) are subject to manufacturing tolerances and change without notice.



## Steps for Installation:

1. Excavation must be dug 1" [25mm] deeper than specified minimum concrete encasement.
2. Place trench with bedding brackets, rebar, frames, and/or anything that is required for that specific application.
3. Pour 2" [50.8mm] bedding layer of concrete. Let pour set.
4. Adjust using rebar clip for finish grade alignment.
5. Make Final Pour to top of trench per system submittal.

**⚠️ WARNING:** Cancer and Reproductive Harm - [www.P65Warnings.ca.gov](http://www.P65Warnings.ca.gov)

**⚠️ ADVERTENCIA:** Cáncer y daño reproductivo - [www.P65Warnings.ca.gov](http://www.P65Warnings.ca.gov)

**⚠️ AVERTISSEMENT:** Cancer et effets néfastes sur la reproduction - [www.P65Warnings.ca.gov](http://www.P65Warnings.ca.gov)

\*Regularly furnished unless otherwise specified.