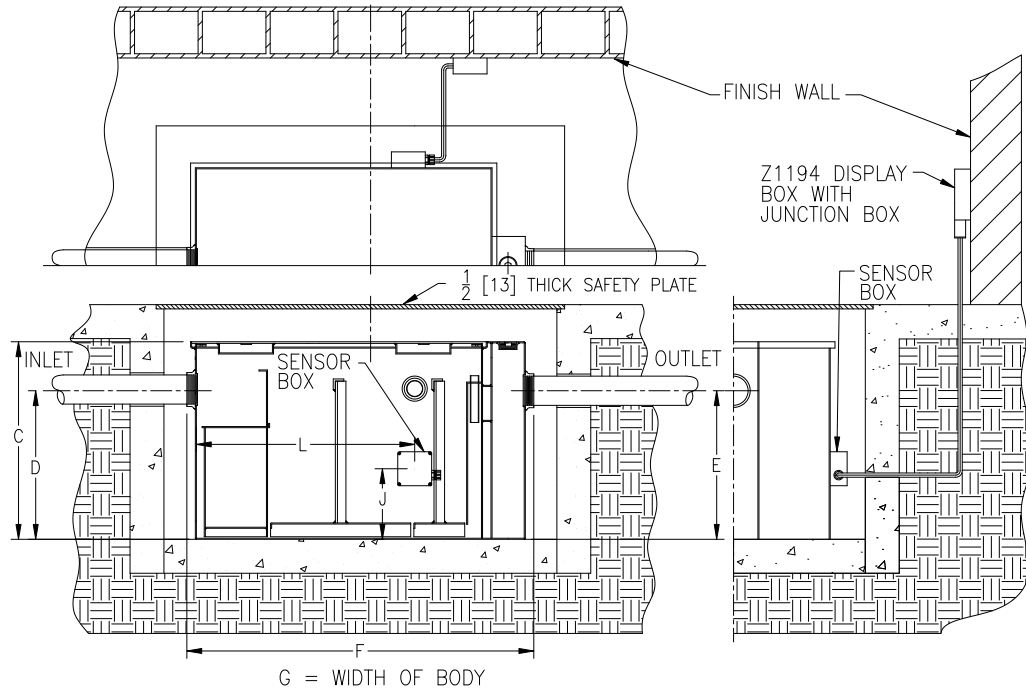




# Z1198

## LARGE CAPACITY OIL INTERCEPTOR WITH OIL LEVEL SENSOR PIT INSTALLATION EXAMPLE SHEET

Dimensional data (inches and [mm]) are subject to manufacturing tolerances and change without notice.



Flow Rate GPM [L.P.M.]	Inlet/Outlet Size In. [mm]	Water Capacity Gal. [L]	App. Wt. Lbs. [Kg]	No. of Covers	Dimensions In Inches [mm]					
					C	D/E	F	G	J	L
75 [284]	3 [75]	65 [246]	332 [151]	1	22-3/4 [578]	18-1/2 [470]	36 [914]	28-5/8 [727]	8 [203]	25-3/4 [654]
100 [379]	3 [75]	110 [306]	432 [196]	1	27 [686]	23 [584]	42-3/4 [1086]	33-5/8 [854]	10 [254]	30-1/8 [765]
125 [473]	3 [75]	150 [568]	780 [354]	2	30-1/8 [765]	24-1/2 [622]	49-1/4 [1251]	40 [1016]	14-1/4 [362]	36-5/8 [916]
150 [568]	4 [100]	190 [719]	888 [403]	2	30-3/4 [781]	25-1/4 [641]	56 [1422]	41-3/8 [1051]	14 [356]	43-7/8 [1114]
200 [757]	4 [100]	265 [1003]	1055 [478]	2	35-1/2 [901]	29-7/8 [759]	61 [1549]	43-5/8 [2286]	18 [457]	46-5/8 [1184]
250 [946]	5 [125]	460 [1741]	1438 [625]	2	41 [1041]	36 [914]	71 [1803]	51-3/8 [1305]	20 [508]	56-5/8 [1438]
300 [1136]	5 [125]	660 [2498]	1840 [835]	2	46-1/4 [1175]	39-5/8 [1006]	80 [2032]	58-3/8 [1483]	20-5/8 [524]	65-5/8 [1667]
350 [1325]	6 [150]	860 [3255]	2180 [989]	2	50-1/2 [1283]	43-7/8 [1114]	87 [2210]	63-5/8 [1616]	27-5/8 [702]	74-1/8 [1882]
400 [1514]	6 [150]	1090 [4126]	2536 [1150]	3	54-1/4 [1378]	47-5/8 [1210]	94 [2388]	67 [1702]	31-5/8 [803]	79-1/8 [2009]
450 [1703]	6 [150]	1275 [4826]	2816 [1277]	3	55-1/4 [1403]	48-5/8 [1235]	100 [2540]	72 [1829]	32 [813]	85-3/8 [2168]
500 [1893]	6 [150]	1435 [5431]	2970 [1347]	3	57-1/4 [1454]	51-5/8 [1311]	104 [2642]	74 [1880]	35 [889]	88-3/8 [2245]

### ENGINEERING SPECIFICATION: ZURN Z1198

Large capacity acid resistant coated interior and exterior fabricated steel oil interceptor, with a fiberglass sensor box containing an electronic oil lever sensor (specify right or left side)\*, a fiberglass display box with one green power light, one yellow & red dual oil level lights, audio alarm and junction box. Complete with bronze cleanout plug and visible double wall trap seal, removable combination pressure equalizing/flow diffusing baffle and sediment bucket, horizontal baffle, and vent connections either side. Secured gasketed nonskid cover complete with flow control fitting. Regularly furnished with inlet and outlet in high position.

Note:

- \*1. Factory installed sensor box is mounted on the left or right hand side of the unit when facing inlet (must be specified).
- 2. Power supply 120V GFCI.
- 3. Recommended Installations: Sitting on the floor or recessed in a pit only. (A pit installation requires that a drain or sump pump be installed to keep the pit relatively dry).

### PREFIXES

\_\_\_ Z Acid Resistant Coated Fabricated Steel\*

**⚠ WARNING:** Cancer and Reproductive Harm - [www.P65Warnings.ca.gov](http://www.P65Warnings.ca.gov)

**⚠ ADVERTENCIA:** Cáncer y daño reproductivo - [www.P65Warnings.ca.gov](http://www.P65Warnings.ca.gov)

**⚠ AVERTISSEMENT:** Cancer et effets néfastes sur la reproduction - [www.P65Warnings.ca.gov](http://www.P65Warnings.ca.gov)

\*Regularly furnished unless otherwise specified.

Zurn Industries, LLC | Specification Drainage Operation  
1801 Pittsburgh Avenue, Erie, PA U.S.A. 16502 · Ph. 855-663-9876, Fax 814-454-7929  
In Canada | Zurn Industries Limited  
3544 Nashua Drive, Mississauga, Ontario L4V 1L2 · Ph. 905-405-8272, Fax 905-405-1292  
[www.zurn.com](http://www.zurn.com)

Rev. B  
Date: 7/3/2018  
C.N. No. 140269  
Form No. IT62