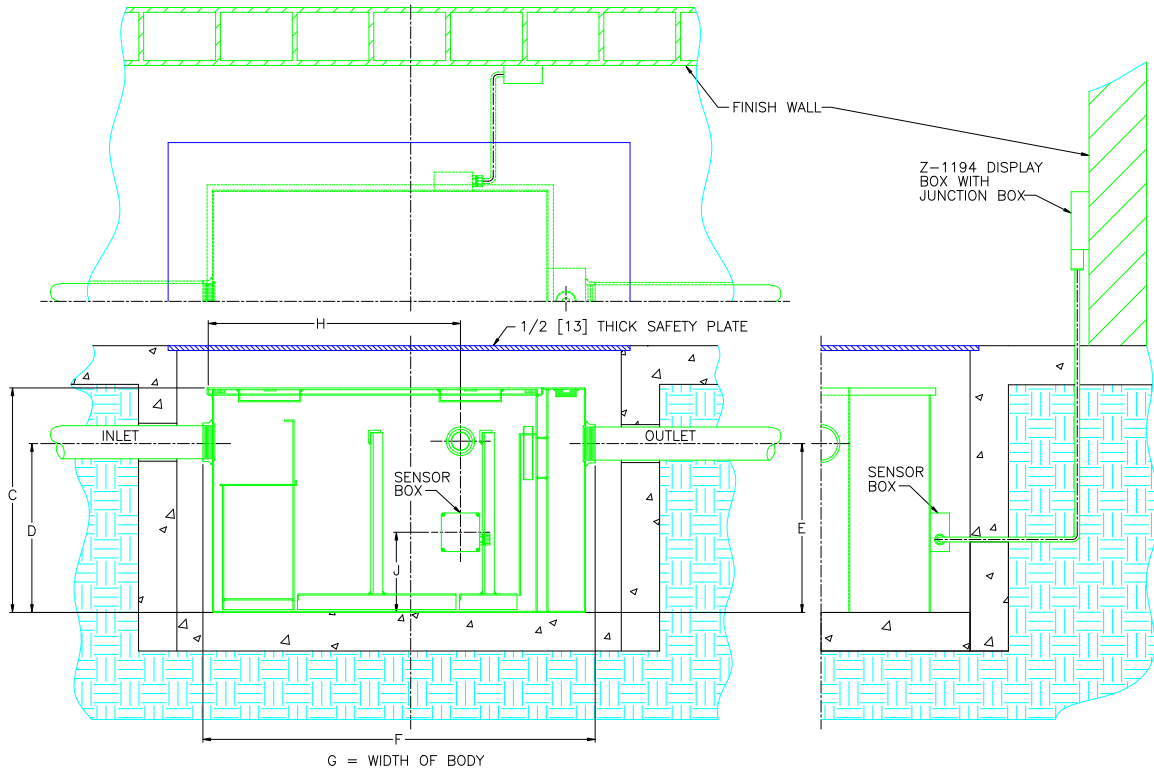




Z1196 OIL INTERCEPTOR WITH OIL LEVEL SENSOR PIT INSTALLATION EXAMPLE SHEET

Dimensional Data (inches and [mm]) are Subject to Manufacturing Tolerances and Change Without Notice



Size	Inlet/ Outlet Size**	Flow Rate G.P.M. [L]	Water Capacity Gal. [L]	Oil Capacity [L]	Approx. Wt. Lbs. [kg]	Dimensions in Inches					
						C	D/E	F	G	H	J
300	2 [50]	10 [38]	7 [26]	3 [11]	56 [25]	13 5/8 [346]	8 1/8 [206]	22 5/8 [575]	14 [356]	11 7/16 [291]	3 13/16 [97]
400	2 [50]	15 [57]	9 [34]	4 [15]	77 [35]	14 [356]	8 1/4 [210]	22 3/4 [578]	14 1/8 [359]	11 7/16 [291]	3 7/8 [98]
500	3 [75]	20 [76]	10 [38]	5 [19]	106 [48]	15 1/2 [394]	9 3/8 [238]	24 5/8 [625]	16 3/4 [425]	13 1/16 [332]	4 7/16 [113]
600	3 [75]	25 [95]	16 [61]	8 [30]	116 [53]	18 1/4 [464]	11 3/4 [298]	27 1/2 [699]	17 1/4 [438]	15 5/8 [397]	5 5/8 [143]
700	3 [75]	35 [132]	21 [79]	10 [38]	140 [63]	19 3/4 [502]	12 1/2 [318]	29 7/8 [759]	19 7/8 [505]	16 [406]	5 7/8 [149]
800	3 [75]	50 [189]	30 [114]	15 [57]	171 [78]	24 1/4 [616]	14 1/4 [362]	31 3/4 [806]	22 1/2 [572]	16 15/16 [430]	6 5/8 [168]

ENGINEERING SPECIFICATION: ZURN Z1196 Acid Resistant coated interior and exterior fabricated steel oil interceptor, with a fiberglass sensor box containing an electronic oil lever sensor (specify right or left side)*, a fiberglass display box with one green power light, one yellow & red dual oil level lights, audio alarm and junction box. Complete with bronze cleanout plug and visible double wall trap seal, removable combination pressure equalizing/flow diffusing baffle and sediment bucket, horizontal baffle, and vent connections either side. Secured gasketed nonskid cover complete with flow control fitting. Regularly furnished with inlet and outlet in high position.

Note:

- *1. Factory installed sensor box is mounted on the left or right hand side of the unit when facing inlet (must be specified).
2. Power supply 120V GFCI.
3. Recommended Installations: Sitting on the floor or recessed in a pit only. (A pit installation requires that a drain or sump pump be installed to keep the pit relatively dry).

PREFIXES

___ Z- Acid Resistant Coated Fabricated Steel*

- ⚠ **WARNING:** Cancer and Reproductive Harm - www.P65Warnings.ca.gov
- ⚠ **ADVERTENCIA:** Cáncer y daño reproductivo - www.P65Warnings.ca.gov
- ⚠ **AVERTISSEMENT:** Cancer et effets néfastes sur la reproduction - www.P65Warnings.ca.gov