



# Z1201-N\_3-FMBO AND Z1201-N\_4-FMBO EZCARRY® INSTALLATION INSTRUCTIONS

For EZCarry™ Bank Assembly Installation Instructions refer to Zurn form #C46 which can be obtained through the Zurn website.

1. Lay carrier fitting on floor, waste line barrel down.  
See Fig. 1

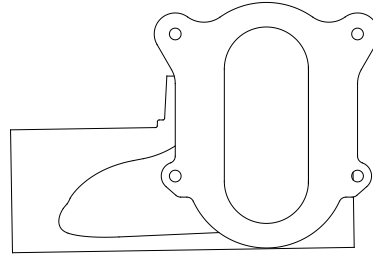


Fig. 1

2. Place faceplate gasket from trim kit on fitting. Align the gasket holes with the tapped holes in the fitting.  
See Fig. 2

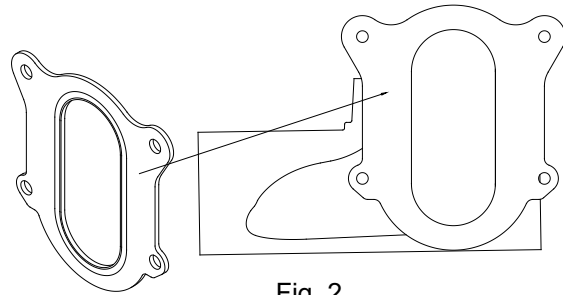


Fig. 2

3. Remove the faceplate/feet from trim kit box and align the faceplate slots with the gasket and fitting holes. Using four 1/2" [13mm] bolts from the Fitting & Faceplate hardware bag, secure the bolts with a ratcheting wrench and snug tight, tightening them in the pattern shown (A thru D).  
See Fig. 3

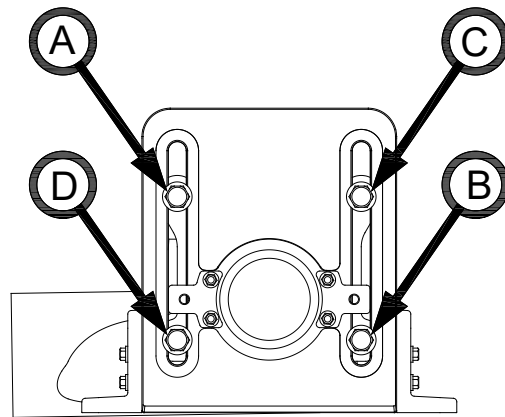


Fig. 3

4. To adjust the rough-in height, loosen the feet bolts and set to the desired height. Secure bolts using wrench (8-10 lb-ft of torque). Use caution to keep the feet parallel when adjusting the height.  
See Fig. 4.

Note: Factory faceplate/feet assembly is set for a 4" [102 mm] rough-in height with 5" [127 mm] maximum adjustable height.

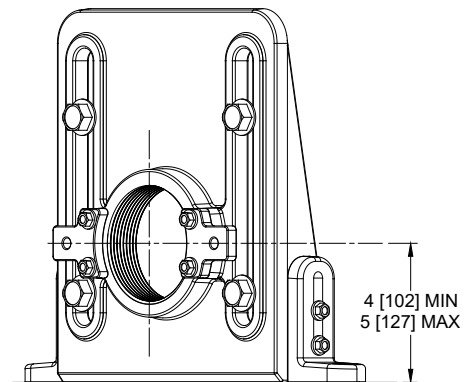


Fig. 4

**⚠ WARNING:** Cancer and Reproductive Harm - [www.P65Warnings.ca.gov](http://www.P65Warnings.ca.gov)

**⚠ ADVERTENCIA:** Cáncer y daño reproductivo - [www.P65Warnings.ca.gov](http://www.P65Warnings.ca.gov)

**⚠ AVERTISSEMENT:** Cancer et effets néfastes sur la reproduction - [www.P65Warnings.ca.gov](http://www.P65Warnings.ca.gov)

Zurn Industries, LLC | Specification Drainage Operation  
1801 Pittsburgh Avenue, Erie, PA 16502, Ph. 855.663.9876

In Canada | Zurn Industries Limited  
7900 Goreway Drive, Unit 10, Brampton, Ontario L6T 5W6, Ph. 877.892.5216

[www.zurn.com](http://www.zurn.com)

Rev. A  
Date: 04/11/23  
C.N. No. 145231  
Prod. | Dwg. No. C65 Page 1 of 5



# Z1201-N\_3-FMBO AND Z1201-N\_4-FMBO EZCARRY® INSTALLATION INSTRUCTIONS

5. Standing the assembly upright, loosen the faceplate bolts to adjust the waste line height and pitch as required. Re-secure bolts using ratcheting wrench (25-35 lb-ft of torque).  
See Fig. 5

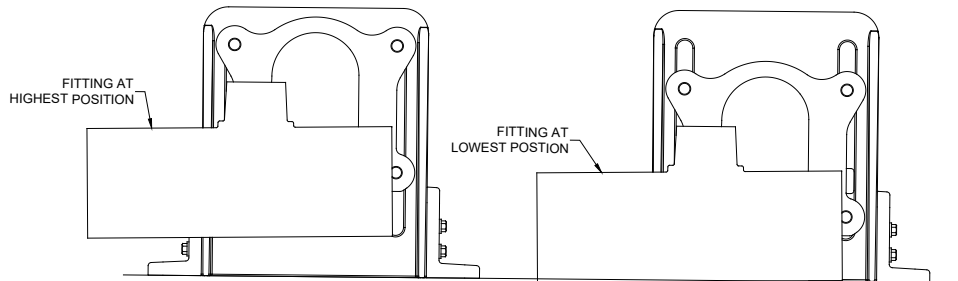


Fig. 5

6. Align the carrier with the waste line. Mark locations on the floor for anchoring studs.  
See Fig. 6

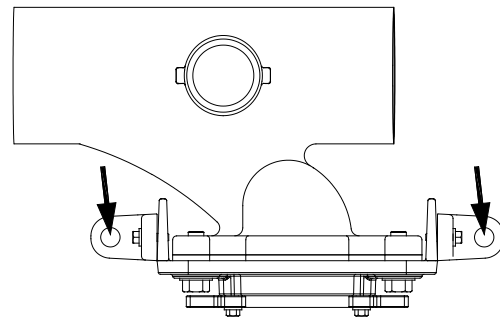


Fig. 6

7. Prep the floor for concrete anchors and place the carrier back into position. Lag down the feet using 1/2" [13mm] minimum anchors (supplied by others).  
See Fig. 7

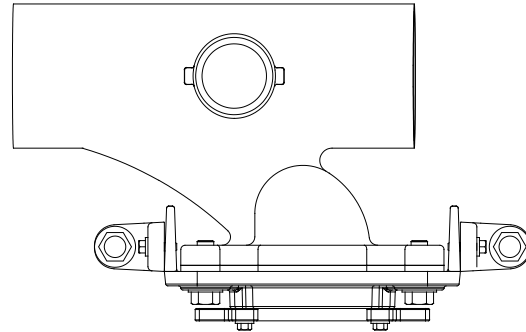


Fig. 7

8. Thread the EZ-Set™ coupling into the faceplate by hand until the threads engage. Using a strap or pipe wrench, continue to turn the coupling into the faceplate to create a water-tight seal. Ensure the protective sleeve is flush with the test cap.  
See Fig. 8

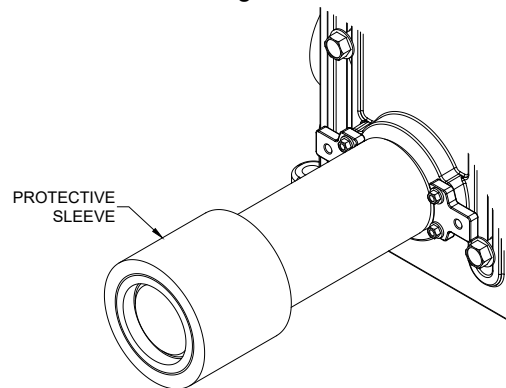


Fig. 8

**⚠ WARNING:** Cancer and Reproductive Harm - [www.P65Warnings.ca.gov](http://www.P65Warnings.ca.gov)

**⚠ ADVERTENCIA:** Cáncer y daño reproductivo - [www.P65Warnings.ca.gov](http://www.P65Warnings.ca.gov)

**⚠ AVERTISSEMENT:** Cancer et effets néfastes sur la reproduction - [www.P65Warnings.ca.gov](http://www.P65Warnings.ca.gov)

Zurn Industries, LLC | Specification Drainage Operation  
1801 Pittsburgh Avenue, Erie, PA 16502, Ph. 855.663.9876

In Canada | Zurn Industries Limited  
7900 Goreway Drive, Unit 10, Brampton, Ontario L6T 5W6, Ph. 877.892.5216

[www.zurn.com](http://www.zurn.com)

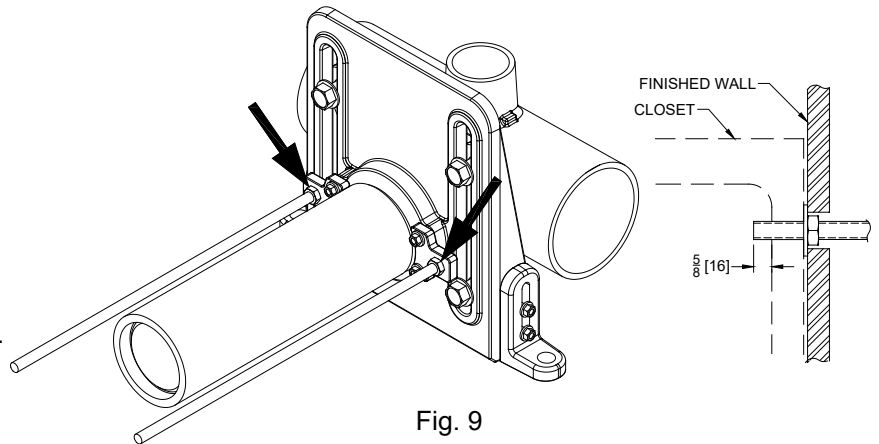
Rev. A  
Date: 04/11/23  
C.N. No. 145231  
Prod. | Dwg. No. C65 Page 2 of 5



# Z1201-N\_3-FMBO AND Z1201-N\_4-FMBO EZCARRY® INSTALLATION INSTRUCTIONS

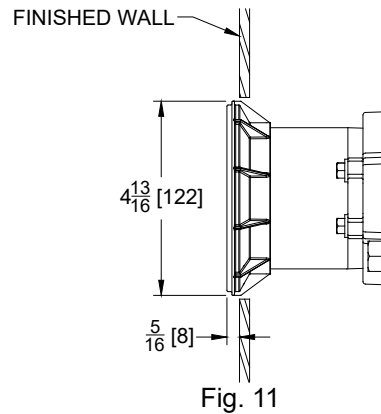
9. Prep for finished wall. Fasten the (2) threaded rods from the finish bag into the brackets and cut to length until each rod extends  $5/8"$  [ $16\text{ mm}$ ] past the closet bowl flange. Add included  $3/8"$  [ $10\text{ mm}$ ] washer to each rod, and secure nut on each of the rods.  
See Fig. 9

NOTE: If the studs are too long they will bottom out in the finishing cap nut, preventing proper gasket compression which may result in leakage.



10. Perform pressure test per Local Code Requirements.

11. Finished wall should be installed. Ensure appropriate size opening is made for coupling.  
See Fig. 11



12. Using a reciprocating saw or oscillating multi-tool, cut EZ-Set™ coupling flush with wall to remove excess coupling length. Deburr sharp edges.  
See Fig. 12a and 12b

Note: Ensure reciprocating saw or oscillating multi-tool does not come in contact with threaded rods.

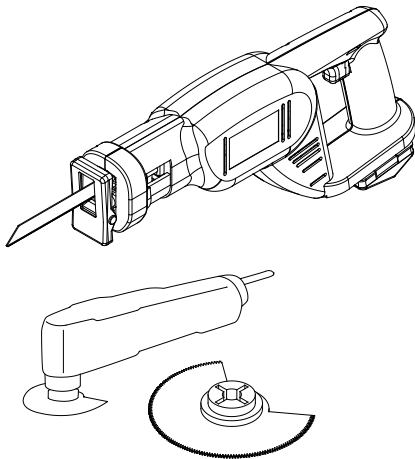


Fig. 12a

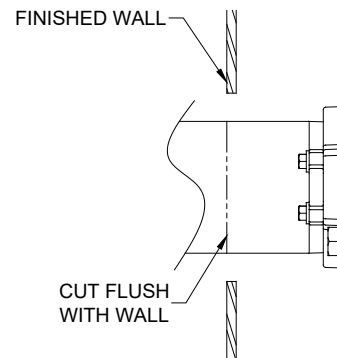


Fig. 12b

**⚠ WARNING:** Cancer and Reproductive Harm - [www.P65Warnings.ca.gov](http://www.P65Warnings.ca.gov)

**⚠ ADVERTENCIA:** Cáncer y daño reproductivo - [www.P65Warnings.ca.gov](http://www.P65Warnings.ca.gov)

**⚠ AVERTISSEMENT:** Cancer et effets néfastes sur la reproduction - [www.P65Warnings.ca.gov](http://www.P65Warnings.ca.gov)

Zurn Industries, LLC | Specification Drainage Operation  
1801 Pittsburgh Avenue, Erie, PA 16502, Ph. 855.663.9876

In Canada | Zurn Industries Limited  
7900 Goreway Drive, Unit 10, Brampton, Ontario L6T 5W6, Ph. 877.892.5216

[www.zurn.com](http://www.zurn.com)

Rev. A

Date: 04/11/23

C.N. No. 145231

Prod. | Dwg. No. C65

Page 3 of 5

13. Prep the coupling end and flange, following PVC Cement manufacturer's instructions. Glue flange to pipe with "TOP" properly aligned.  
See Fig. 13

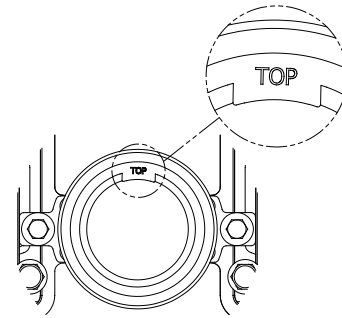


Fig. 13

14. Thread a backup nut and bearing washer onto each 3/8" [10 mm] rod. Adjust hardware so that the front surface of each flat washer is 1/16" [2 mm] in front of the finished wall. All bearing washers must be in the same plane to support the fixture and prevent cracking.  
See Fig. 14.

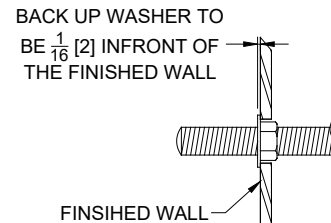


Fig. 14

15. Peel off the removable backing from one-side of the Neo-Seal Gasket and seat into the groove of the water closet outlet horn.  
See Fig. 15

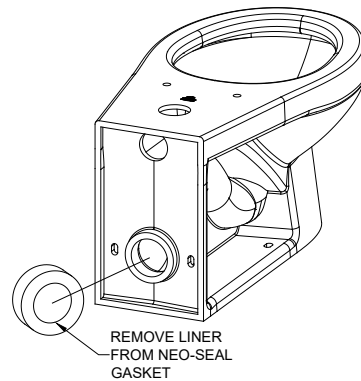


Fig. 15

16. Peel off removable backing liner from the opposite side of the gasket and hang the water closet onto the threaded rods. Ensure Neo-Seal gasket seals to the coupling.  
See Fig. 16

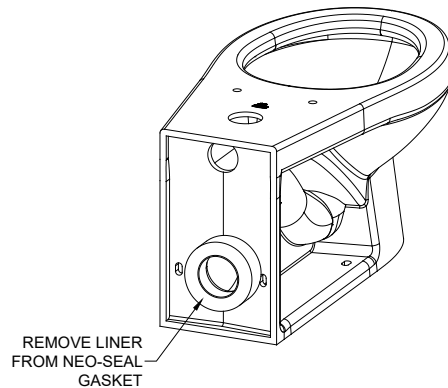


Fig. 16

**⚠ WARNING:** Cancer and Reproductive Harm - [www.P65Warnings.ca.gov](http://www.P65Warnings.ca.gov)

**⚠ ADVERTENCIA:** Cáncer y daño reproductivo - [www.P65Warnings.ca.gov](http://www.P65Warnings.ca.gov)

**⚠ AVERTISSEMENT:** Cancer et effets néfastes sur la reproduction - [www.P65Warnings.ca.gov](http://www.P65Warnings.ca.gov)

Zurn Industries, LLC | Specification Drainage Operation  
1801 Pittsburgh Avenue, Erie, PA 16502, Ph. 855.663.9876

In Canada | Zurn Industries Limited  
7900 Goreway Drive, Unit 10, Brampton, Ontario L6T 5W6, Ph. 877.892.5216

[www.zurn.com](http://www.zurn.com)

Rev. A

Date: 04/11/23

C.N. No. 145231

Prod. | Dwg. No. C65 Page 4 of 5



# Z1201-N\_3-FMBO AND Z1201-N\_4-FMBO EZCARRY® INSTALLATION INSTRUCTIONS

17. Assemble a fiber washer, nut onto each rod and hand tighten. Secure closet with an additional half-turn using a wrench on each nut to complete the installation. See Fig. 17a and Fig. 17b.

Note: The Closet should not make contact with the finished wall.

NOTE: FINISHED WALL NOT SHOWN

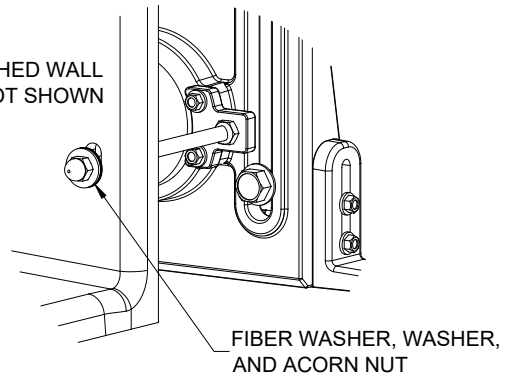


Fig. 17a

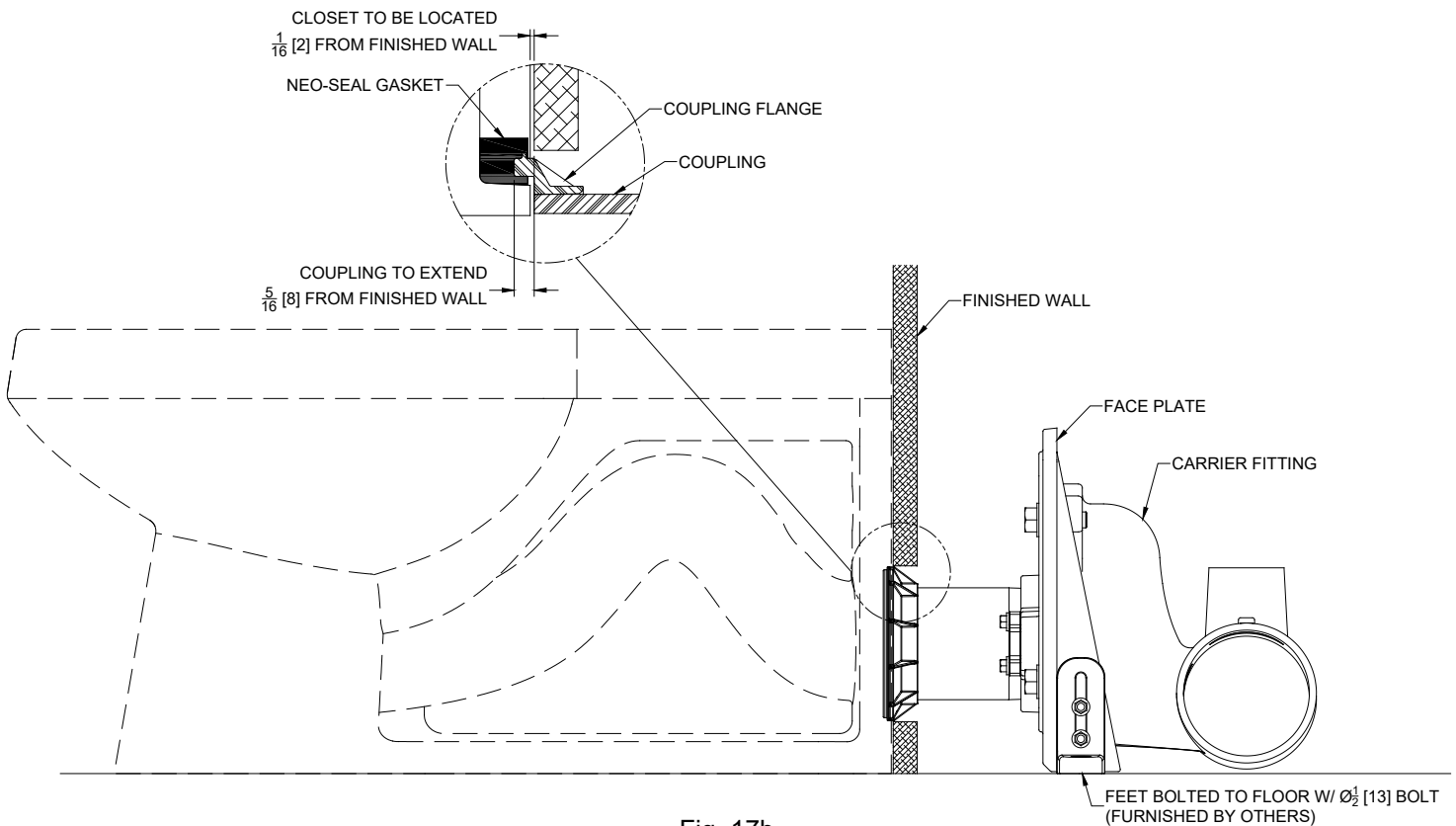


Fig. 17b

- ⚠ **WARNING:** Cancer and Reproductive Harm - [www.P65Warnings.ca.gov](http://www.P65Warnings.ca.gov)  
 ⚠ **ADVERTENCIA:** Cáncer y daño reproductivo - [www.P65Warnings.ca.gov](http://www.P65Warnings.ca.gov)  
 ⚠ **AVERTISSEMENT:** Cancer et effets néfastes sur la reproduction - [www.P65Warnings.ca.gov](http://www.P65Warnings.ca.gov)

Zurn Industries, LLC | Specification Drainage Operation  
1801 Pittsburgh Avenue, Erie, PA 16502, Ph. 855.663.9876

In Canada | Zurn Industries Limited  
7900 Goreway Drive, Unit 10, Brampton, Ontario L6T 5W6, Ph. 877.892.5216

[www.zurn.com](http://www.zurn.com)

Rev. A  
Date: 04/11/23  
C.N. No. 145231  
Prod. | Dwg. No. C65 Page 5 of 5