



Z882 Perma-Trench[®] Drain Systems

Heavy-Duty Without the Heavy Lifting

Keep things flowing, from a faster install to performance long after. No extra equipment, labor, or extra parts. And most importantly, no mishaps along the way from lugging around heavy, bulky systems.

We manufactured our trench drain systems around convenience for the contractor without compromise in design and durability. Your team can divide and conquer to cut installation time by two thirds and a few pros.



Take a Load Off Your Crew

Contractors inspire our engineering. We realize the work behind every installation. Why add to the job ahead of you? We cut the extra costs and hands behind every system. The system is lightweight, longer, and one piece. Its modular 8-foot sections require fewer joints and less labor than comparable models. On average, one trench drain system takes two workers to lift. Contractors save a significant amount of installation time at each jobsite.

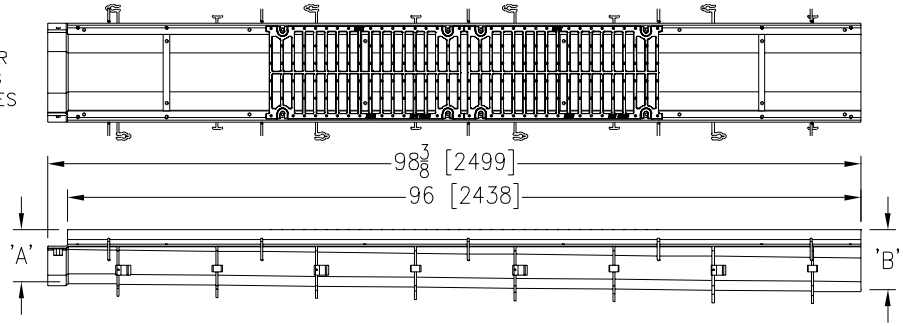
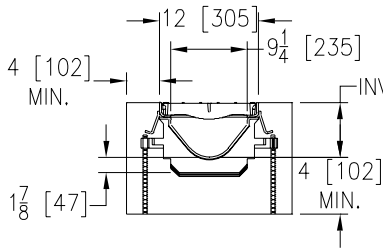
Less Steps to Set

Once set in place, the channel's rebar clips allow for steady adjustment. Combination tie-down/leveling devices at 20-inch intervals help you clinch the perfect slope. Couple that with mechanical interlocking ends, and you have a system that's effortless to carry, set, align, and level. The system also includes a debris cover, by request, to shield the trench during the process. It's easy to clean with no specialized tools needed.

Outperform and Outlast

Satisfying your project requirements shouldn't sacrifice performance years later. The radiused bottom increases the low-volume flow rate and reduces sediment buildup and long-term wear. Depending on the jobsite, contractors can choose between a 1.04 percent channel slope or a neutral slope for natural grades. Its high density polyethylene construction is scratch resistant and 0 percent water absorbent. To top it off, the grate's heavy-duty Dura-coated cast iron construction meets the industry standard.

SPECIFYING ENGINEER IS RESPONSIBLE FOR CONCRETE ENCASEMENT AND REINFORCING BASED UPON APPLICATION AND LOCAL CODES



NOTE: Actual channel length is 98-3/8" [2499 mm] to allow for overlap. Dimensional data (inches and [mm]) are subject to manufacturing tolerances and change without notice.

Z882 Perma-Trench® Drain System Engineering Specification

Zurn Z882 Channels shall be 96" [2438 mm] long, 12" [305 mm] wide reveal and have a 9-1/4" [235 mm] throat. Modular channel sections shall be made of 0% water absorbent High Density Polyethylene (HDPE). Shall have a positive mechanical connection between channel sections that will not separate during the installation and shall mechanically lock into the concrete surround every 12" [305 mm]. Channels shall weigh less than 5.05 lbs. [2.29 kg] per linear foot, have a smooth, 3" [76 mm] radiused self cleaning bottom with a Manning's coefficient of 0.009 and 1.04% or neutral 0% built in slope. Channels shall have rebar clips standard to secure trench in its final location. Shall be provided with standard DGC grates that lock down to frame. Zurn 12" [305 mm] wide reveal ductile iron slotted grate conforming to ASTM specification A536-84, Grade 80-55-06. Ductile iron grate is rated class C per the DIN EN1433 top load classifications. Supplied in 24" [608 mm] nominal lengths with 13/16" [21 mm] wide slots, and 1-1/2" [38 mm] bearing depth. Grate has an open area of 80.8 sq. in per ft. [171,027 sq. mm per meter]. The 1/4" [6 mm] thick heavy-duty carbon steel frame assembly conforms to ASTM specification A36 with 10 - 4" [102 mm] long concrete anchors per 96" [2438 mm]. Grate lockdown bars are to be integral to the frame. The frame is supplied with a powder coated finish. All welds must be performed by a certified welder per ASTM standard AWS D1.1. Frames Shall be produced in the U.S.A.

Keep Out Debris

Solving for our customers means continuously improving. After surveying real professionals and spending time in the field, we realized something was missing...a debris cover. The Zurn Debris Cover* protects your trench drain system—saving you time and money later on from having to clean out the trench and making costly repairs.



*Debris Covers are non-load bearing

Visit zurn.com to learn more.

ZURN INDUSTRIES, LLC Trench Drainage Operation
1801 Pittsburgh Avenue, Erie, PA 16502, 855.663.9876

In Canada: ZURN INDUSTRIES LIMITED 7900 Goreway Drive, Unit 10, Brampton, Ontario L6T 5W6, 877.892.5216

Form No. 220-038, 3/19



US 1.855.ONE.ZURN CANADA 1.877.892.5216 ZURN.COM