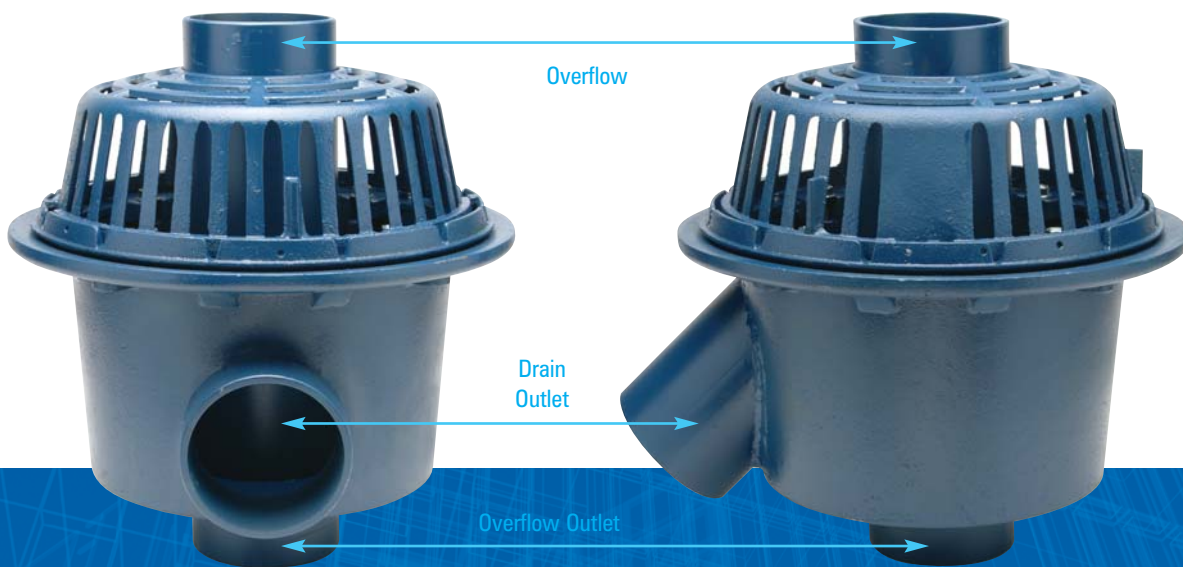


## Z103 and Z103-45 Dual Outlet Roof Drains

Primary and Overflow Drainage Protection in One!



Z103 Dual Outlet Roof Drain

Z103-45 Dual Outlet Roof Drain  
with 45° Outlet

### Labor Savings

- Simplifies Roof Drain Design
- Eliminates installing a separate overflow drain
- Can utilize Zurn Top-Set® Deck Plate for quicker installations

### Less Liability

- Reduces liability by eliminating up to 50% of roof penetrations compared to installing a separate overflow drain

### Proven

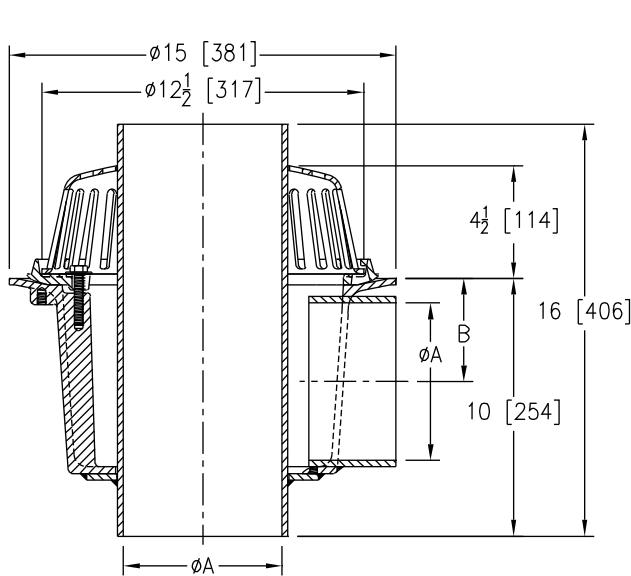
- Conforms to ANSI A112.21.2.



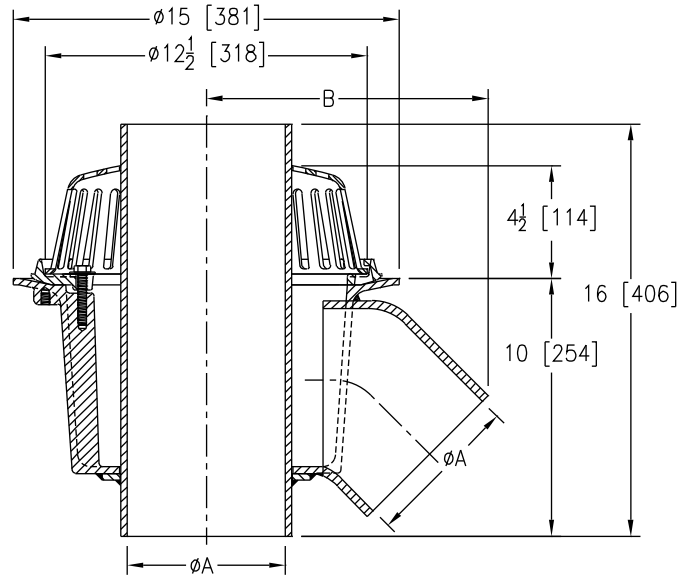
Optional TopSet® Deck Plate and Stainless Mesh Screen Over Dome

# Zurn Dual Outlet Roof Drains

## Z103



## Z103-45



A Pipe Size Inches	B Inches	Approx. Wt. Lbs.	Grate Open Area Sq. In.
3	5-9/16	60	103
4	5-1/16		
6	4		

**ENGINEERING SPECIFICATION:** ZURN Z103 15" diameter Dual Outlet Roof Drain with 90° sewer line connection. Dura-Coated cast iron deep sump body with combination membrane flashing clamp/gravel guard, overflow pipe (3", 4" and 6" [76, 102, 152]), and low silhouette cast iron dome.

## Z103 Options

**OUTLETS** (Specify pipe size in inches and type of outlet.)

OUTLET TYPE	DESIGNATION Pipe Size/Outlet Type
No Hub	..... 3NH, 4NH, 6NH

### PREFIXES

- ZC** D.C.C.I. Body with Cast Iron Dome
- ZRB** D.C.C.I. Body with Plain Bronze Dome

### SUFFIXES

- AR Acid Resistant Epoxy Coated Finish
- BS Bronze Mesh Screen Over Dome
- C Underdeck Clamp
- DP Top-Set® Deck Plate (Replaces -C)
- E Static Extension 1" through 4" (Specify Height)
- G Galvanized Cast Iron
- GD Galvanized Cast Iron Dome
- MS Mesh Screen on Overflow Pipe
- SS Stainless Mesh Screen Over Dome
- VP Vandal-Proof Secured Top
- 45 45° Sewer Line Connection (3" and 4" Only)
- 84 Stainless Steel Perforated Gravel Guard