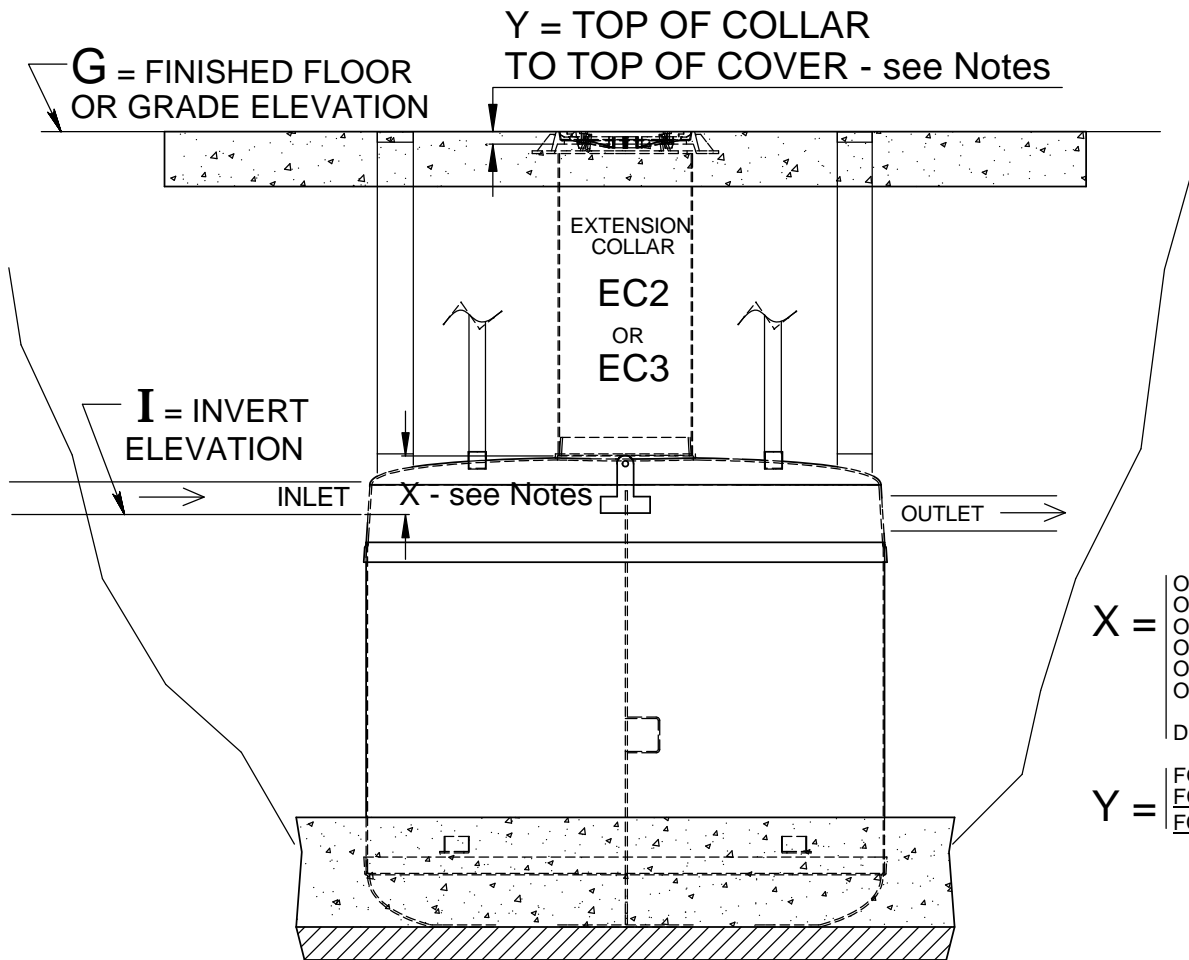


CALCULATION OF EXTENSION COLLAR QUANTITY FOR STANDARD UNDERGROUND GREEN TURTLE TANKS

QUANTITY REQUIRED TO FINALIZE ORDERING



SIDE VIEW

NOTES:

- * FOR TRAFFIC LOADING, MINIMUM HEIGHTS APPLY, SEE TANK INSTALLATION DRAWING.
- FOR INSTALLATIONS WITH AN ALARM, A MINIMUM OF 1 FT. EC2 IS REQUIRED TO BE INSTALLED TO ALLOW ROOM FOR THE PROBE.
- FOR UNITS WITH 36" DIA. ACCESS WAY, A 36"X24" REDUCER PROX 1 FT HIGH IS REQUIRED TO BE INCLUDED AS PART OF THE EXTENSION;
- FOR UNITS WITH ALARM AND 36" ACCESSWAY, 1 FT. OF EC3 AND 1 REDUCER IS REQUIRED.

Fill out right column to calculate quantity of extension collar		
OPERATION	VARIABLE	RESULT
Input	G =	
Subtract	I =	
Invert to grade	G - I =	
Convert to inches	G - I = (inches)	
Subtract	X =	
Subtract	Y =	
* Collar height (inches)	G - I - X - Y =	
COLLAR QUANTITY	Round up to nearest foot =	

- X =**
- ON GMC/OMC/EHT 50 - 300 MODELS WITH 4" PIPING..... X = 8"
 - ON GMC/OMC/EHT 500 - 3000 MODELS WITH 6" PIPING..... X = 12"
 - ON GMC/OMC UPC/FL 500 - 3000 MODELS WITH 6" PIPING..... X = 18"
 - ON 4000 + MODELS (92" DIA.) WITH 6" PIPING..... X = 24"
 - ON 50 - 300 USG DOUBLE WALL TANKS..... X = 19"
 - ON 500 - 1500 USG DOUBLE WALL TANKS..... X = 29"

DIFFERING PIPE SIZES MAY ALTER 'X', CONSULT GREEN TURTLE

- Y =**
- FOR ACCESS COVERS:
FCH GB4 AND FCH G4.. Y = 2"
 - FC FRP B Y = 1.5"

1 metre = 39.5 inches
12 inches = 1 foot

TITLE: GUIDE TO CALCULATING EXTENSION COLLAR QUANTITY ALL DIMENSIONS IN INCHES PROJECT: WO:	REV	DATE	DRAWN BY	
	1	NOVEMBER 9, 2010	L. SIMKINS	
	2	APRIL 18, 2011	L. SIMKINS	
	3			
	4			
	5			
	6			
	7			
	8			
	9			
10				
DRAWN BY: L. SIMKINS		SIZE	DWG. NO.	REV.
DRAWN DATE: DECEMBER 11, 2007		A	Collar Height	2
SCALE: NTS		DO NOT SCALE DRAWING		SHEET 1 OF 1

greenturtle®

US 877 428 8187 CAN 877 966 9444
www.greenturtletech.com