

# MODEL 12-PV-ACL-2, 12-PV-ACLST-2

1/2" ACCELERATOR PILOT, 2-WAY

Used on 1-1/4" - 10" ZW205E OR ZW209E

ITEM NO.	ITEM NUMBER	DESCRIPTION	QUANTITY	12-PV-ACL-2	STAINLESS STEEL
1	3707-11C	SS CAP SCREW, 10-32-5/8	8	●	
2	PV-ACL-A-1	ACCEL PILOT BELL	1	●	●
3	PV-ACL-33	ACCEL PILOT SPRING	1	●	
4	PV-PRD-9	ACV PILOT STEM NUT	1	●	
5	PV-PRD-14	ACV PILOT STEM LOCK WASHER	1	●	
6	PV-RLF-14	STEM WASHER	1	●	
7	PV-PRD-43	ACV PILOT DIAPHRAGM	1	●	
8	011N	O-RING, NSF	1	●	
9	PV-RLF-340	PLUNGER WITH MOLDED RUBBER	1	●	●
10	PV-ACL-11	SCREW, 5/16-18X3/4 BUTTON SKT HD	1	●	
11	PV-RLF-18	SEAT	1	●	●
12	WK-019N	O-RING	1	●	
13	PV-RLF1-1	1/2" BODY	1	●	●
14	TPV-ACL	WTAG, ACCELERATOR PILOT	1	●	

★  
★  
★  
★

## REPAIR KITS

RK12-PV-ACL-2

REPAIR KIT, 1/2" & 3/4" ACCELERATOR PILOT, 2-WAY

DESCRIPTION	QTY.	ITEM
ACCELERATOR PILOT SPRING	1	PV-ACL-33
ACV PILOT DIAPHRAGM	1	PV-PRD-43
O-RING	1	011N
PLUNGER WITH MOLDED RUBBER	1	PV-RLF-340

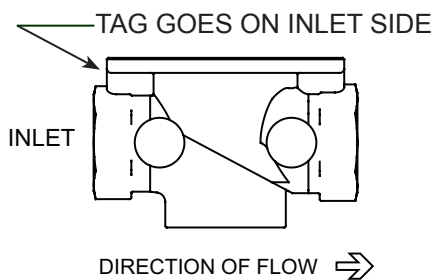
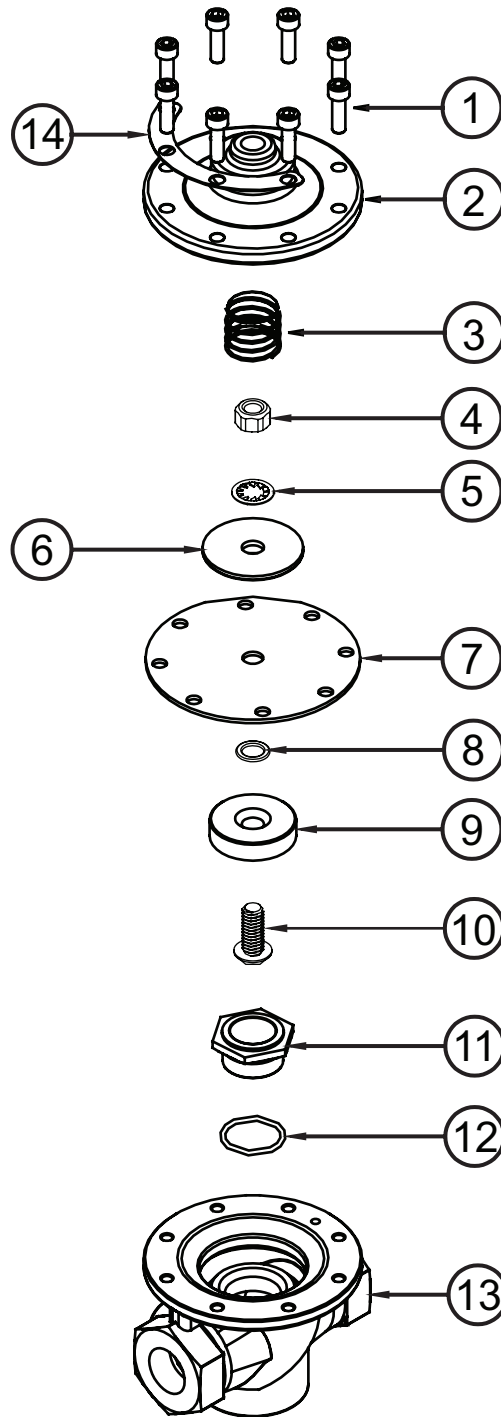
# MODEL 12-PV-ACL-2

## Parts Drawing



- Item included in specified Model

Stainless Steel Pilots use the same parts except those noted below



★ REPAIR KIT ITEMS (ALL ★ ITEMS IN KIT)