

MODEL 375AST



Stainless Steel Reduced Pressure Principle – Backflow Preventers 2 1/2" to 10"

Repair Kit Components		2 1/2"	3" and 4"	2 1/2" - 4"				2 1/2" - 6"	6"						8" and 10"				10"		
Size Range		RK212-350ASTCK2	RK4-350ASTCK2	RK4-350	RK4-375ASTCK1	BRK4-SSLBF-SEATRTNR	BRK4-SSLBF-SEAT2RTNR	RK212-RV375AST-HOSE	RK212-RV-ASSY	RK6-350	RK6-375ASTCK1	RK6-350ASTCK2	BRK6-SSLBF-SEATRTNR	RK6-RV375AST-HOSE	BRK6-SSLBF-SEAT2RTNR	RK6-RV375AST-HOSE	RK8-350	RK8-375ASTCK1	RK8-350ASTCK2	RK8-RV-ASSY	RK10-350ASTCK2
2 1/2"		•			•	•	•	•													
3"			•	•	•	•	•	•													
4"			•	•	•	•	•	•													
6"									•	•	•	•	•	•	•						
8"																•	•	•	•	•	•
10"																•	•	•	•	•	•
Item #	Item Description																				
1	O-Ring, Relief Valve							•												•	
2	Relief Valve Assembly							•												•	
3	Bolt, Relief Valve							•(x2)												•(x2)	
4	Seat Retainer #1				•	•(x6)				•	•	•(x6)									
5	Seat Retainer #2		•(x2)			•(x6)							•(x6)								
6	O-Ring, Seat	•	•	•(x2)	•				•(x2)	•	•					•(x2)	•	•		•	•
7	Bolt, Poppet Retainer	•(x4)	•(x4)		•(x4)					•(x4)	•(x4)							•(x6)	•(x6)	•(x6)	•(x6)
8	Handle, #1 Poppet Assembly				•					•											
9	Washer	•(x4)	•(x4)		•(x4)					•(x4)	•(x4)							•(x6)	•(x6)	•(x6)	•(x6)
10	O-Ring, Retainer	•(x4)	•(x4)	•(x8)	•(x4)				•(x8)	•(x4)	•(x4)					•(x12)	•(x6)	•(x6)	•(x6)	•(x6)	•(x6)
11	Poppet Retainer	•	•		•					•	•							•	•	•	•
12	Seal Ring	•	•	•(x2)	•				•(x2)	•	•					•(x2)	•	•	•	•	•
13	Seat Assembly, #1 Poppet				•					•								•			•
14	Seat Assembly, #2 Poppet	•	•								•								•		•
15	Sensing Tube Fitting							•(x2)	•				•(x2)		•(x2)					•	
16	Sensing Tube							•					•		•						
17	Washer, Seat Retainer																	•(x4)	•(x7)	•(x7)	•(x7)
18	Nut, Seat Retainer																	•(x4)	•(x7)	•(x7)	•(x7)

Whole Goods (Available for individual sale)

Item #	Item Description	2 1/2"	3"	4"	6"	8"	10"
19	Gate Valve, NRS (FxF)	212-48	3-48	4-48	6-48	8-48	10-48
	Gate Valve, NRS (GXG)	212-48G	3-48G	4-48G	6-48G	8-48G	10-48G
	Gate Valve, NRS (GXF)	212-48GXF	3-48GXF	4-48GXF	6-48GXF	8-48GXF	10-48GXF
	Gate Valve, OS&Y (FxF)	212-48OSY	3-48OSY	4-48OSY	6-48OSY	8-48OSY	10-48OSY
	Gate Valve, OS&Y (GXG)	212-48OSYG	3-48OSYG	4-48OSYG	6-48OSYG	8-48OSYG	10-48OSYG
	Gate Valve, OS&Y (GXF)	212-48OSYGXF	3-48OSYGXF	4-48OSYGXF	6-48OSYGXF	8-48OSYGXF	10-48OSYGXF
20	Butterfly Valve (GXG)	212-49G	3-49G	4-49G	6-49G	8-49G	10-49G
21	Butterfly Valve (GXF)	212-49GXF	3-49GXF	4-49GXF	6-49GXF	8-49GXF	10-49GXF
22	Ball Valve, FxF		12-850XL			34-850XL	
23	Cover Ball Valve		12-850MXL			34-850XL	
24	Cover Retainer Assembly		6-23		8-23		12-23

Item No.	Repair Kit Description
	2 1/2"
RK212-350ASTCK2	#2 Check Assembly Repair Kit, 2 1/2" 375AST
	3" and 4"
RK4-350ASTCK2	#2 Check Assembly Repair Kit, 3" and 4" 375AST
	2 1/2" - 4"
RK4-350	Standard Repair Kit, 2 1/2" - 4" 375AST
RK4-375ASTCK1	#1 Check Assembly Repair Kit, 2 1/2" - 4" 375AST
BRK4-SSLBF-SEATRTNR	Bulk #1 Seat Retainer Repair Kit, 2 1/2" - 4" 375AST
BRK4-SSLBF-SEAT2RTNR	Bulk #2 Seat Retainer Repair Kit, 2 1/2" - 4" 375AST
RK212-RV375AST-HOSE	Braided Hose Kit, 2 1/2" - 4" 375AST RV
	2 1/2" - 6"
RK212-RV-ASSY	Relief Valve Assembly Repair Kit, 2 1/2" - 6" 375AST

Item No.	Repair Kit Description
	6"
RK6-350	Standard Repair Kit, 6" 375AST
RK6-375ASTCK1	#1 Check Assembly Repair Kit, 6" 375AST
RK6-350ASTCK2	#2 Check Assembly Repair Kit, 6" 375AST
BRK6-SSLBF-SEATRTNR	Bulk #1 Seat Retainer Repair Kit, 6" 375AST
RK6-RV375AST-HOSE	Braided Hose Kit, 6" 375AST RV
BRK6-SSLBF-SEAT2RTNR	Bulk #2 Seat Retainer Repair Kit, 6" 375AST
	8" and 10"
RK8-RV375AST-HOSE	Braided Hose Kit, 8" and 10" 375AST RV
RK8-350	Standard Repair Kit, 8" and 10" 375AST
RK8-375ASTCK1	#1 Check Assembly Repair Kit, 8" and 10" 375AST
RK8-350ASTCK2	#2 Check Assembly Repair Kit, 8" and 10" 375AST
RK8-RV-ASSY	Relief Valve Assembly Repair Kit, 8" and 10" 375AST
	10"
RK10-350ASTCK2	#2 Check Assembly Repair Kit, 10" 375AST

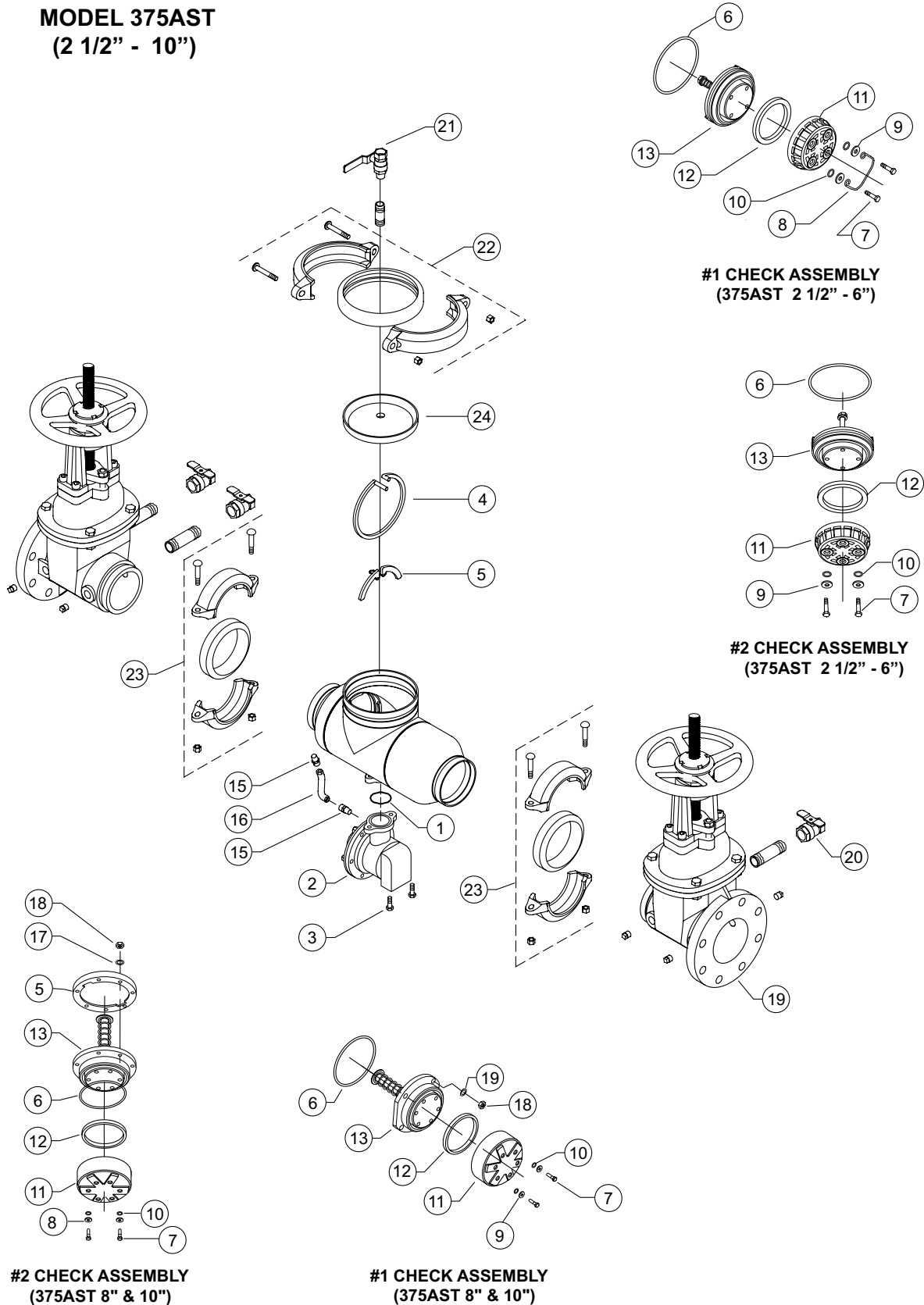
MODEL 375AST

Stainless Steel Reduced Pressure Principle – Backflow Preventers 2 1/2" to 10"

Parts Drawing



MODEL 375AST (2 1/2" - 10")



#1 CHECK ASSEMBLY
(375AST 2 1/2" - 6")

#2 CHECK ASSEMBLY
(375AST 2 1/2" - 6")

#2 CHECK ASSEMBLY
(375AST 8" & 10")

#1 CHECK ASSEMBLY
(375AST 8" & 10")