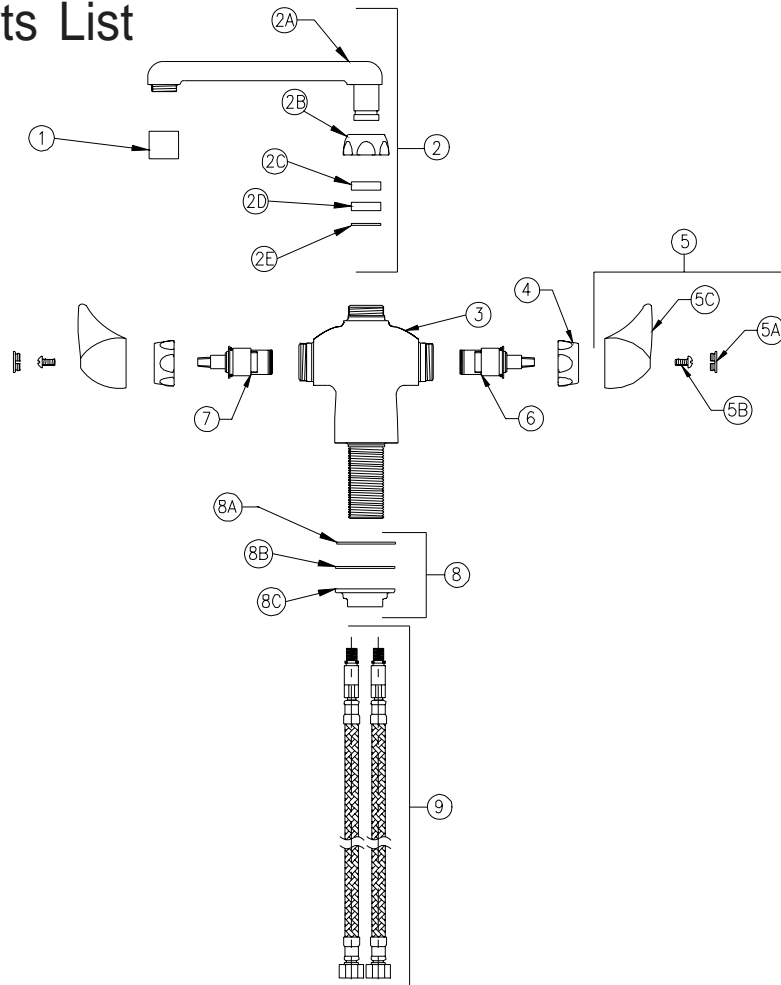


LABORATORY FAUCET - DOUBLE



Z826F3-XL Parts List



Item	Part Number	Description	Qty.
1	G63504	3/4"-27 Female Aerator	1
2	G67890	6" Cast Swing 'F' Spout Assembly	1
2A	59526003	6" Cast Swing Spout	1
2B	59435001	Spout Nut	1
2C	59441001	Bearing Washer	1
2D	59459001	Spout Seal	1
2E	92937001	Retaining Ring	1
3	60822003	Double Lab Body	1
4	59523001	Handle Nut	2
5	G60515	Vandal-Resistant Dome Lever Handles	1
5A	G60500	Hot/Cold Color-Coded Indexes	1
	59454001	Hot Color-Coded Index	1
	59454002	Cold Color-Coded Index	1
5B	62464001	10-32 Screw	2
5C	60514001	Dome Lever Handle	2
6	59517006	Short Hot Cartridge	1
7	59517005	Short Cold Cartridge	1
8	G61073	Mounting Hardware	1
8A	60549002	Friction Gasket	1
8B	60444002	Washer	1
8C	60445002	Mounting Nut	1
9	93318012	12" [305mm] S.S. Brided Flex Hoses	2

ZURN INDUSTRIES, LLC ♦ COMMERCIAL BRASS OPERATION ♦ 2640 SOUTH WORK STREET ♦ FALCONER NY 14733

Phone: 1-800-997-3876 ♦ Fax: 1-919-775-3541 ♦ www.zurn.com

In Canada: ZURN INDUSTRIES LIMITED ♦ 3544 Nashua Drive ♦ Mississauga, Ontario L4V1L2 ♦ Phone: 905/405-8272 Fax: 905/405-1292