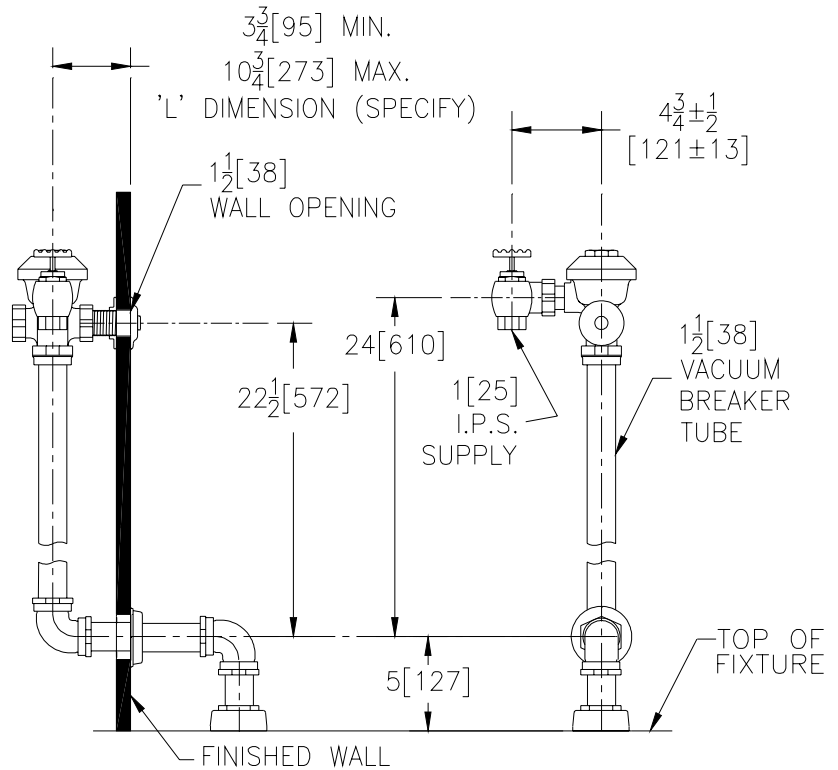




Concealed Z6153 Model with Exposed Top Spud Connection for Water Closets



Flow Options

- WS1** 1.6 Gal. Low Consumption
- FF** 4.5 Gal. Full Flush
- Standard Flush** 3.5 Gallons Per Flush

Suffix Options (Check/Specify Appropriate Options)

- _____ **-ADA** Low Force/ADA Compliant Handle
- _____ **-BG** BioCare Handle
- _____ **-J** Oscillating Handle
- _____ **-L3** 3" [76] Metal Push Button
- _____ **-YB** Sweat Solder Cold
- _____ Other

ENGINEERING SPECIFICATION: ZURN Z6153 AquaFlush® Concealed Closet Flush Valve - Concealed, quiet diaphragm-type rough brass flushometer valve with chloramine resistant, dual seal diaphragm with a clog resistant by-pass. Complete with a non-hold open and no leak handle feature, high back pressure vacuum breaker, flush tube, elbow flush connections and fixture spud securing nut for top spud connection. Control stop has internal siphon-guard protection. Internal seals are made of chloramine resistant materials.

This space is for Architectural/engineering Approval