



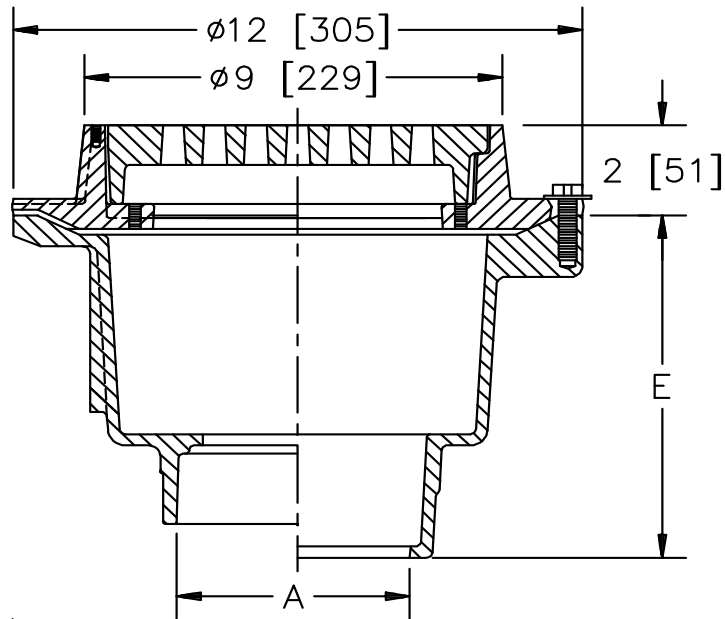
Z511

9 [229] DIAMETER HEAVY-DUTY DRAIN

SPECIFICATION SHEET

TAG _____

Dimensional Data (inches and [mm]) are Subject to Manufacturing Tolerances and Change Without Notice



A Pipe Size In.[mm]	Approx. Wt. Lbs. [kg]	Grate Open Area Sq. In. [cm ²]
2, 3, 4 [51, 76, 102]	40 [18]	18 [116]

ENGINEERING SPECIFICATION: ZURN Z511

9" [229mm] Diameter top drain, Dura-Coated cast iron deep sump body with bottom outlet, seepage pan and combination membrane flashing clamp and frame for heavy-duty cast iron deep flange grate.

OPTIONS (Check/specify appropriate options)

PIPE SIZE

- 3, 4 [76, 102]
- 3, 4 [76, 102]
- 3, 4 [76, 102]
- 2, 3, 4 [51, 76, 102]

(Specify size/type) **OUTLET**

- ___ IC Inside Caulk
- ___ IG Inside Gasket
- ___ IP Threaded
- ___ NL Neo-Loc

'E' BODY HT. DIM.

- 7-5/8 [194]
- 7-5/8 [194]
- 7-5/8 [194]
- 6-7/8 [175]

PREFIXES

- ___ Z D.C.C.I. Body and Top*
- ___ ZB D.C.C.I. Body w/ Polished Bronze Top (Add 3/16 [5] to 2 [51] and 3/4 [19] to 9 [229] dim.)
- ___ ZN D.C.C.I. Body w/ Polished Nickel Bronze Top (Add 3/16 [5] to 2 [51] and 3/4 [19] to 9 [229] dim.)

SUFFIXES

- | | |
|---|---|
| ___ -AR Acid Resisting Epoxy Coated Cast Iron | ___ -TC Neo-Loc Test Cap Gasket
(2, 3, 4 [51, 76, 102] NL Bottom Outlet Only) |
| ___ -BT Bell Trap | ___ -TS Top Secured with Slotted Screws |
| ___ -DG Duresist Grate | ___ -V Backwater Valve (For 3 & 4 [76-102] IC & IP or 3" IG Connections only) |
| ___ -F Extension Frame (Specify Total Height Req'd.) | ___ -VP Vandal-Proof Secured Top |
| ___ -G Galvanized Cast Iron | ___ -W Winter Closure Plug (For 3 & 4 [76-102] IC & IP or 3" IG Connections only) |
| ___ -HP Heel-Proof Grate | ___ -Y Sediment Bucket |
| ___ -J Auxiliary Inlet Connection
(Specify 1-1/2 [38] or 2 [51] IP, Number & Location) | |
| ___ -P Trap Primer Connection | |
| ___ -S Secondary Strainer | |
| ___ -SC Solid Cover w/ Lift Handle | |
| ___ -SG Solid Gasketed Cover | |

* Regularly furnished unless otherwise specified.