

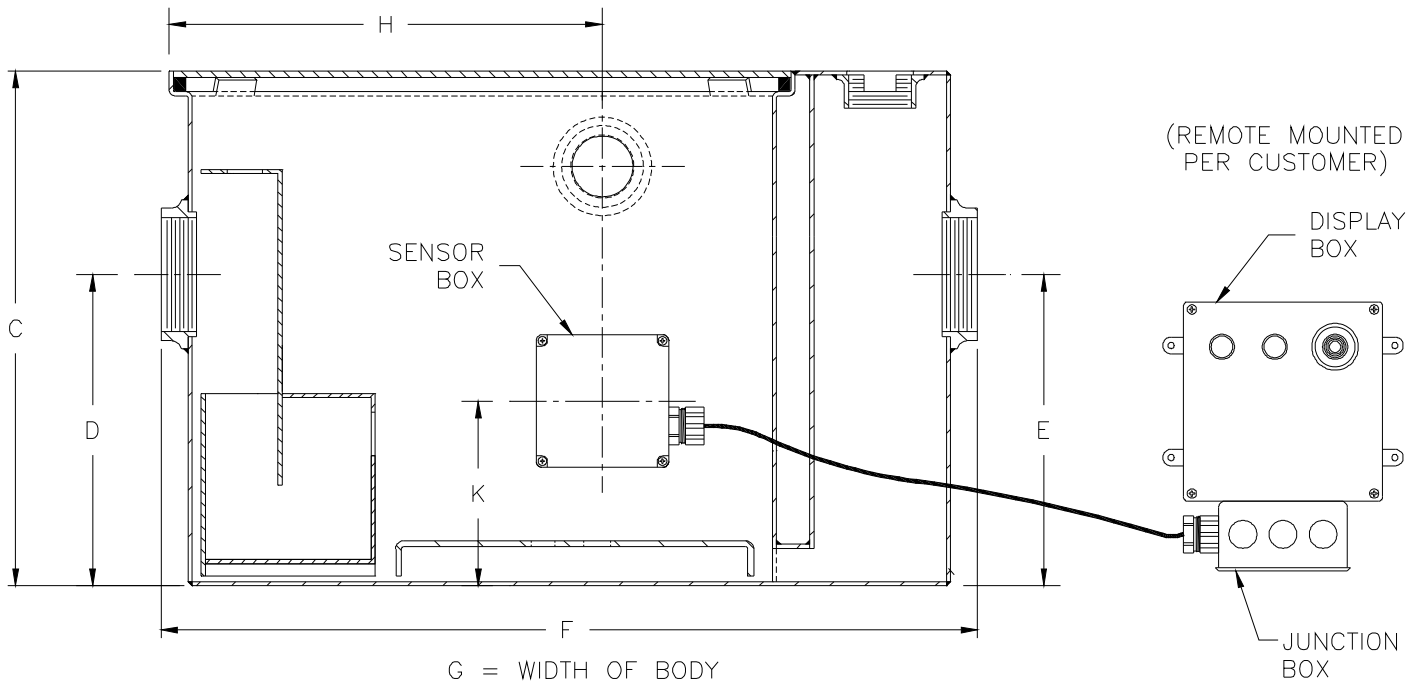


Z1196 OIL INTERCEPTOR WITH OIL LEVEL SENSOR

SPECIFICATION SHEET

TAG _____

Dimensional Data (inches and [mm]) are Subject to Manufacturing Tolerances and Change Without Notice



Size	Inlet/Outlet Size**	Flow Rate G.P.M. [L]	Water Capacity Gal. [L]	Oil Capacity Gal. [L]	Approx. Wt. Lbs. [kg]	Dimensions in Inches					
						C	D/E	F	G	H	K
300	2 [51]	10 [38]	7 [26]	1 [4]	56 [25]	13-5/8 [346]	8-1/8 [206]	25-1/8 [638]	14 [356]	11-5/8 [295]	5-7/16 [138]
400	2 [51]	15 [57]	9 [34]	1 [4]	77 [35]	14 [356]	8-1/4 [210]	25-1/4 [641]	14-1/8 [359]	11-5/8 [295]	5-7/16 [138]
500	3 [76]	20 [76]	10 [38]	1-1/2 [6]	106 [48]	15-1/2 [394]	9-3/8 [238]	27-1/8 [689]	16-3/4 [425]	13-1/4 [336]	6-5/8 [168]
600	3 [76]	25 [95]	16 [61]	3-1/2 [13]	116 [53]	18-1/4 [464]	11-3/4 [298]	30 [762]	17-1/4 [438]	16 [406]	7-3/4 [197]
700	3 [76]	35 [132]	21 [79]	5 [19]	140 [63]	19-3/4 [502]	12-1/2 [318]	32-1/4 [819]	19-7/8 [505]	16-3/8 [416]	7-3/4 [197]
800	3 [76]	50 [189]	30 [114]	7 [27]	171 [78]	24-1/4 [616]	14-1/4 [362]	34-1/8 [869]	22-1/2 [572]	17-1/4 [438]	9-1/16 [230]

ENGINEERING SPECIFICATION: ZURN Z1196 Acid Resistant coated interior and exterior fabricated steel oil interceptor, with a fiberglass sensor box containing an electronic oil lever sensor (specify right or left side)*, a fiberglass display box with one green power light, red oil level light, audible alarm and junction box. Complete with bronze cleanout plug and visible double wall trap seal, removable combination pressure equalizing/flow diffusing baffle and sediment bucket, horizontal baffle, and vent connections either side. Secured gasketed non-skid cover complete with flow control fitting. Regularly furnished with inlet and outlet in high position.

Note:

- *1. Installed sensor box is mounted on the left or right hand side of the unit when facing inlet (must be specified).
2. Power supply 120V GFCI.
3. Recommended Installations: Sitting on the floor or recessed in a pit only. (A pit installation requires that a drain or sump pump be installed to keep the pit relatively dry).
4. For pit installation see Form #IT66.

PREFIXES

_____ Z Acid Resistant Coated Fabricated Steel*

**Inlet and outlet sizes shown indicate standard operating sizes and flow control setting. Size #300 and #400 will have 3 [76] connections reduced to 2 [51] standard. Size #700 and #800 will have 4 [102] connections reduced to 3 [76] as standard.

REV. G	DATE: 10/26/10	C.N. NO. 111977
DWG. NO. 59263	PRODUCT NO. Z1196	

*REGULARLY FURNISHED UNLESS OTHERWISE SPECIFIED