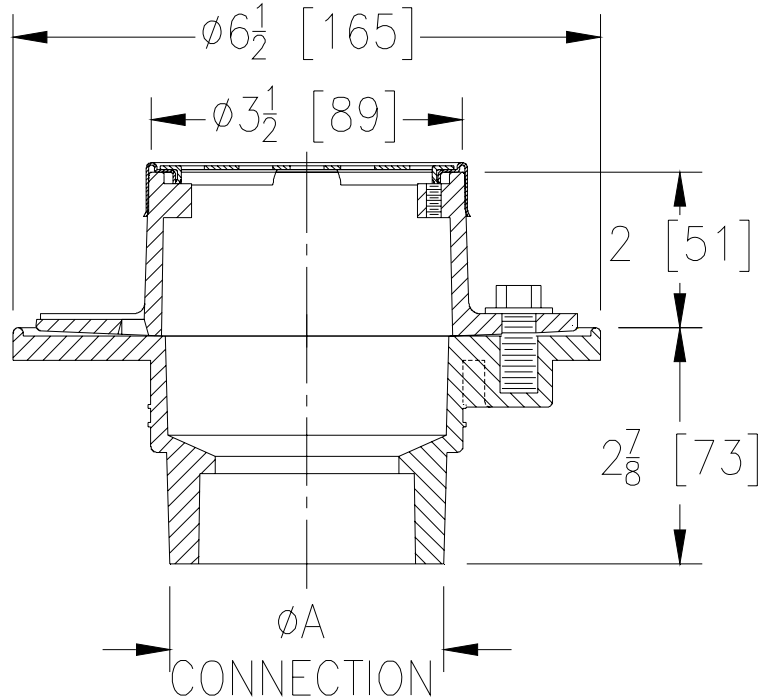


Dimensional Data (inches and [mm]) are Subject to Manufacturing Tolerances and Change Without Notice

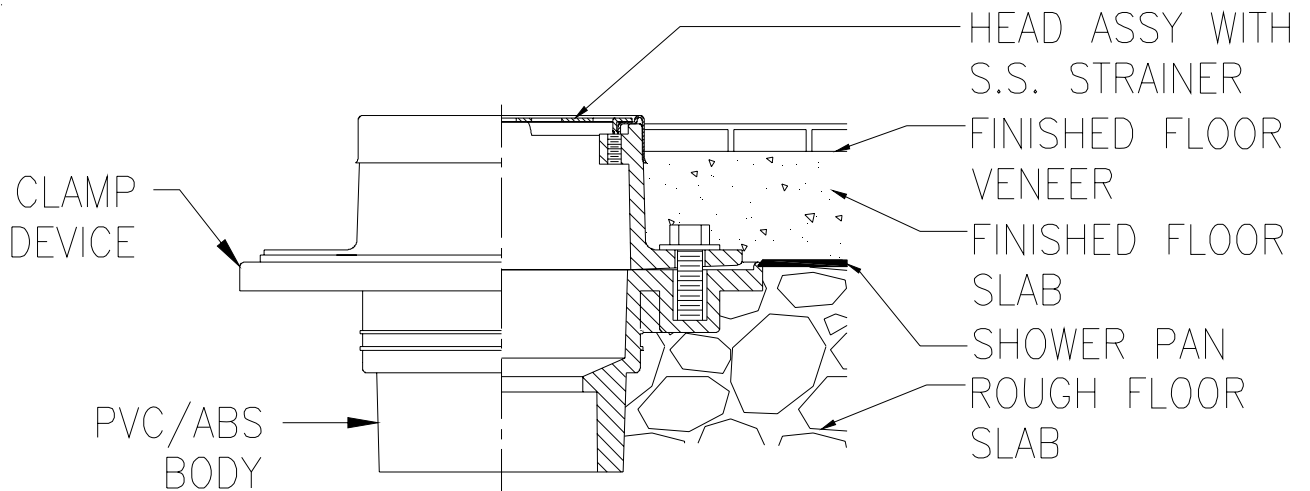


Product	Outlet Connection	Grate Open Area Sq. In [cm ²]
__ FD2251-PVC	2 [51] Solvent Weld	3 [23] 7 [45]
__ FD2221-ABS	2 [51] Solvent Weld	

FD2251 2 x 3 [51 x 76] PVC or ABS Connection Shower Drain Recommended for shower area installations where a water-proofing membrane is used. Complete with a PVC or ABS body, cast iron drain head, and stainless steel frame and secured slotted strainer. Solvent weld outlet connection fits over 2 [51] and inside 3 [76] Sch. 40 DWV pipe.

Options:

__ **-SS** Stainless Steel Strainer



Typical installation