

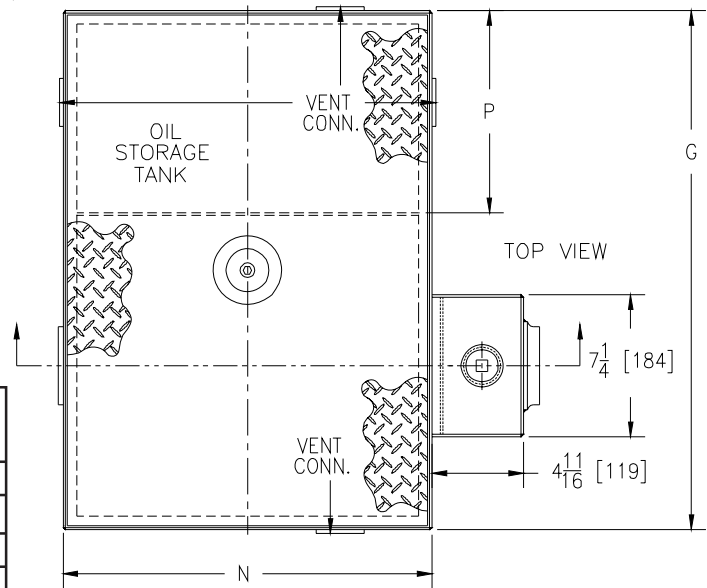
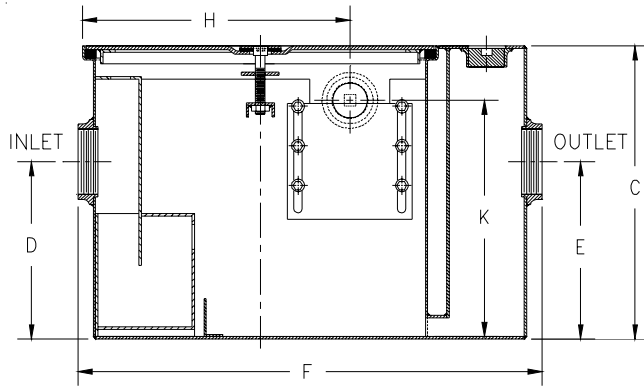


Z1186-ST OIL INTERCEPTOR W/ INTEGRAL STORAGE TANK

SPECIFICATION SHEET

TAG _____

Dimensional Data (inches and [mm]) are Subject to Manufacturing Tolerances and Change Without Notice



SIZE	Inlet/Outlet Size**	Flow Rate G.P.M.	Water Capacity Gal.[L]	Approx. Wt. Lbs.[kg]	P
300	2 [51]	10 [38]	7 [26]	95 [43]	10-1/8 [257]
400	2 [51]	15 [57]	9 [34]	95 [43]	10-1/8 [257]
500	3 [76]	20 [76]	10 [38]	115 [52]	10-5/16 [262]
600	3 [76]	25 [95]	16 [61]	280 [127]	34-3/16 [868]
700	3 [76]	35 [132]	21 [79]	320 [145]	25-11/16 [652]
800	3 [76]	50 [189]	30 [114]	529 [240]	48-1/4 [1225]

Dimensions in inches [mm]								Oil Storage Tank Capacity Gal.[L]	No. of Covers
SIZE	C	D/E	F	G	H	K	N		
300	13-7/8 [352]	8-1/8 [206]	23-1/16 [586]	23-9/16 [598]	12-1/16 [306]	11 [279]	16-7/8 [429]	6 [22]	1
400	14 [356]	8-1/4 [210]	23-1/16 [586]	23-9/16 [598]	12-1/16 [306]	11 [279]	16-7/8 [429]	6 [22]	1
500	15-1/2 [394]	9-3/8 [238]	25-1/16 [637]	26-1/2 [673]	14-3/16 [360]	12-1/2 [318]	18-7/8 [479]	8 [30]	1
600	18-1/4 [464]	11-3/4 [298]	35-7/32 [895]	50-7/8 [1292]	19-1/4 [489]	15-1/4 [387]	29 [737]	55 [208]	2
700	19-3/4 [502]	12-7/16 [316]	43-7/16 [1103]	45 [1143]	23-1/4 [591]	16-3/4 [425]	37 [940]	55 [208]	2
800	24-1/4 [616]	14-3/16 [360]	49-7/16 [1256]	70-1/8 [1781]	26-1/4 [667]	21-1/4 [540]	43 [1092]	125 [473]	3

ENGINEERING SPECIFICATION: ZURN Z1186-ST

Acid Resistant Coated interior and exterior fabricated steel oil interceptor, with bronze cleanout plug and visible double wall trap seal, removable combination pressure equalizing/flow diffusing baffle and sediment bucket, oil drawoff, vent connections, secured gasketed non-skid cover, complete with flow control fitting and left hand integral storage tank. Regularly furnished with inlet and outlet in high position. Note: location of outlet from bottom of interceptor cannot be changed.

OPTIONS (Check/specify appropriate options)

PREFIXES

_____ **Z** Acid Resistant Coated Fabricated Steel*

SUFFIXES

- _____ **-E** Acid Resistant Coated interior and exterior fabricated steel section. (Specify 'C' Dim. required) for recessed installation
- _____ **-HD** Heavy duty traffic cover rated at 10,000 lbs. maximum safe live load.
- _____ **-K** Anchor flange 1-3/4 [44] down from top and 2 [51] wide. A 3 [76] minimum extension height is required when anchor flange (-K) option is specified. (Specify 'C' Dim. height required.)
- _____ **-KC** Anchor flange 1-3/4 [44] down from top and 2 [51] wide with clamp collar.
- _____ **-STR** Storage tank on right hand side when facing the inlet.

** Inlet and outlet sizes shown indicate standard operating sizes and flow control settings. Size #300 and #400 will have 3 [76] connections reduced to 2 [51] as standard. Size #700 and #800 will have 4 [100] connections reduced to 3 [76] as standard.

REV. D	DATE: 10/22/10	C.N. NO. 111959
DWG NO. 66797	PRODUCT NO. Z1186-ST	

*REGULARLY FURNISHED UNLESS OTHERWISE SPECIFIED