

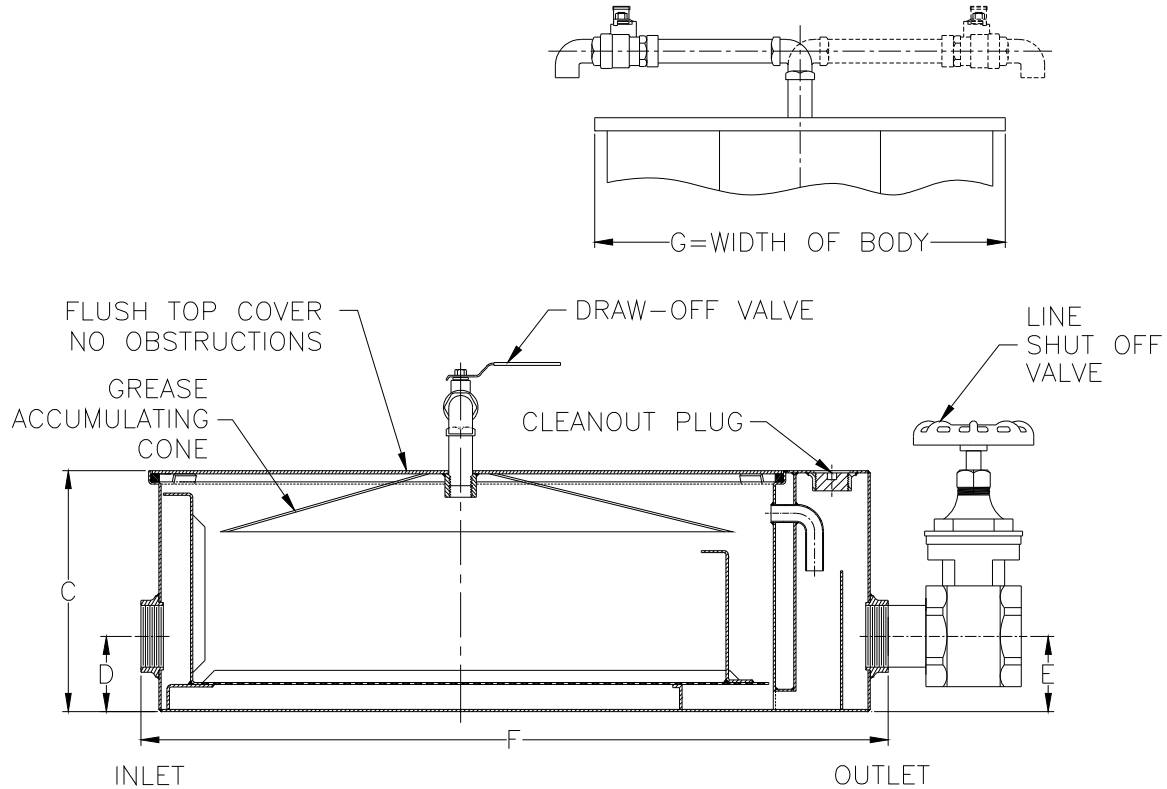


Z1171-RD
 LOW PROFILE GREASE INTERCEPTOR WITH
 RIGID PIPE DRAW-OFF, ACCUMULATING CONE,
 AND IN LINE SHUTOFF VALVE

SPECIFICATION SHEET

TAG _____

Dimensional Data (inches and [mm]) are Subject to Manufacturing Tolerances and Change Without Notice



Size	Inlet/ Outlet Size**	Flow Rate G.P.M. [L]	Capacity		Approx. Wt. Lbs. [kg]	Dimensions in Inches [mm]			
			Water Gal. [L]	Grease Lbs. [kg]		C	D/E	F	G
500	3 [76]	20 [74]	15 [57]	40 [17]	102 [44]	10 [254]	3 1/8 [79]	31 5/16 [795]	21 [533]
700		35 [130]	30 [114]	70 [30]	172 [74]	10 3/4 [273]	3 5/16 [84]	42 7/16 [1078]	29 1/4 [743]
800		50 [186]	45 [171]	100 [43]	210 [90]	16 [406]	10 [254]	49 13/16 [1265]	29 1/4 [743]

ENGINEERING SPECIFICATION: ZURN Z1171-RD Acid Resistant Coated interior and exterior fabricated steel low type grease interceptor, rated at ___ GPM and ___ Lbs. grease capacity, with internal air relief by-pass, bronze cleanout plug and visible double wall trap seal with removable combination pressure equalizing/flow diffusing baffle and sediment tray. Gasketed non-skid secured cover with grease accumulating cone, rigid piping, grease draw-off valve, and an inline closure valve. Complete with Z1108 flow control fitting. Regularly furnished with 3 [76] low inlet and outlet connections.**

PREFIXES

___ Z Acid Resistant Coated Fabricated Steel*

Caution: Installations using indirect piping to unit could result in standing water in floor sink or flooding if line blockage occurs.

SUFFIXES

___ -L Angle type (Z1108-L) flow control device with plunger.

** Inlet and outlet sizes shown indicate standard operating sizes and flow control settings. All sizes will have 4[102] connections reduced to 3[76] as standard. If changed flow control must be adjusted accordingly.

REV. B	DATE: 1/5/10	C.N. NO. 120724
DWG. NO. 67407	PRODUCT NO. Z1171-RD	

*REGULARLY FURNISHED UNLESS OTHERWISE SPECIFIED