



Z5799

"The Pint®" 1/8 gpf, EcoVantage®, Ultra Low Consumption, Concealed Urinal System

TAG _____



Z5799 Series

Accessories (Order separate as specified)

P6000-PC6	6VDC Plugin Power Converter (Up to 8 valves)
P6000-MJ	Mini Junction Box
P6000-HW6	Hardwire Power Converter (Up to 8 valves)

NOTE: Must use either ZURN P6000-HW6 hardwire power converter or ZURN P6000-PC6 plug-in power converter to ensure proper operation. Using a power converter other than Zurn may result in operation malfunction or unit failure.

These dimensions and specifications are subject to change without notice.

Fixture dimensions meet ANSI/ASME standards A112.19.2 and CAN/CSA B45 requirements.

Meets the American Disabilities Guidelines and ANSI A117.1 requirements when urinal is installed 17" [432 mm] from finished floor.



Z5799 Series

- Zurn One ultra low consumption urinal system designed for optimal performance between Zurn fixture and Zurn flush valve ZEG6195EV-HW to save water while exceeding industry performance standards
- 1/8 gallons per flush [0.5 Liters per flush]
- Vitreous china
- High efficiency washout flushing action
- Over 88% water savings over standard 1.0 gpf [4.0 Lpf] system
- Pressure compensating internal flow regulator
- Oversized footprint to make retrofit easy
- 3/4" back spud
- 2" I.P.S. outlet flange and rubber gasket with integral trap
- 14" extended rim for handicap compliance when installed at proper height
- Vandal resistant outlet strainer included
- Shipping Weight: 65 lbs.

ENGINEERING SPECIFICATION:

☐ **Z5799 EcoVantage® High Efficiency Urinal (HEU) -** System comes complete with concealed ZEG6195EV-HW high efficiency hardwired sensor flushometer valve and vitreous china urinal. The system is designed to perform to industry standards with as little as 1/8th gallon of water per flush. Valve is operated by an infrared convergence-type proximity sensor with smart technology, mounted in a 4" x 4" electrical box (provided by others), powered by 6VDC plug-in or hardwired power converter, furnished with vandal resistant protective metal housing, and chloramine resistant internal seals. Sensor is factory set for optimal performance but can be calibrated in the field for specific applications. Valve features an internal flow regulator to maintain constant flow rates independent of line pressures and an in-line filter to protect the valve from debris within the water. Complete with high pressure vacuum breaker, one piece hex coupling nut, adjustable tailpiece. Control stop has wheel handle, internal siphon-guard protection, and sweat solder kit. Vitreous china urinal is 3/4" back spud with 2" outlet connection and comes complete with universal retrofit mounting bracket, and vandal resistant outlet strainer.



This space is for Architectural/engineering Approval

ZURN INDUSTRIES, LLC. ♦ COMMERCIAL BRASS OPERATION ♦ 5900 ELWIN BUCHANAN DRIVE ♦ SANFORD NC 27330

Phone: 1-800-997-3876 ♦ Fax: 919-775-3541 ♦ World Wide Web: www.zurn.com

In Canada: ZURN INDUSTRIES LIMITED ♦ 3544 Nashua Drive ♦ Mississauga, Ontario L4V1L2 ♦ Phone: 905-405-8272 Fax: 905-405-1292

EcoVantage® and "The Pint®" are a registered trademarks of Zurn Industries, LLC.

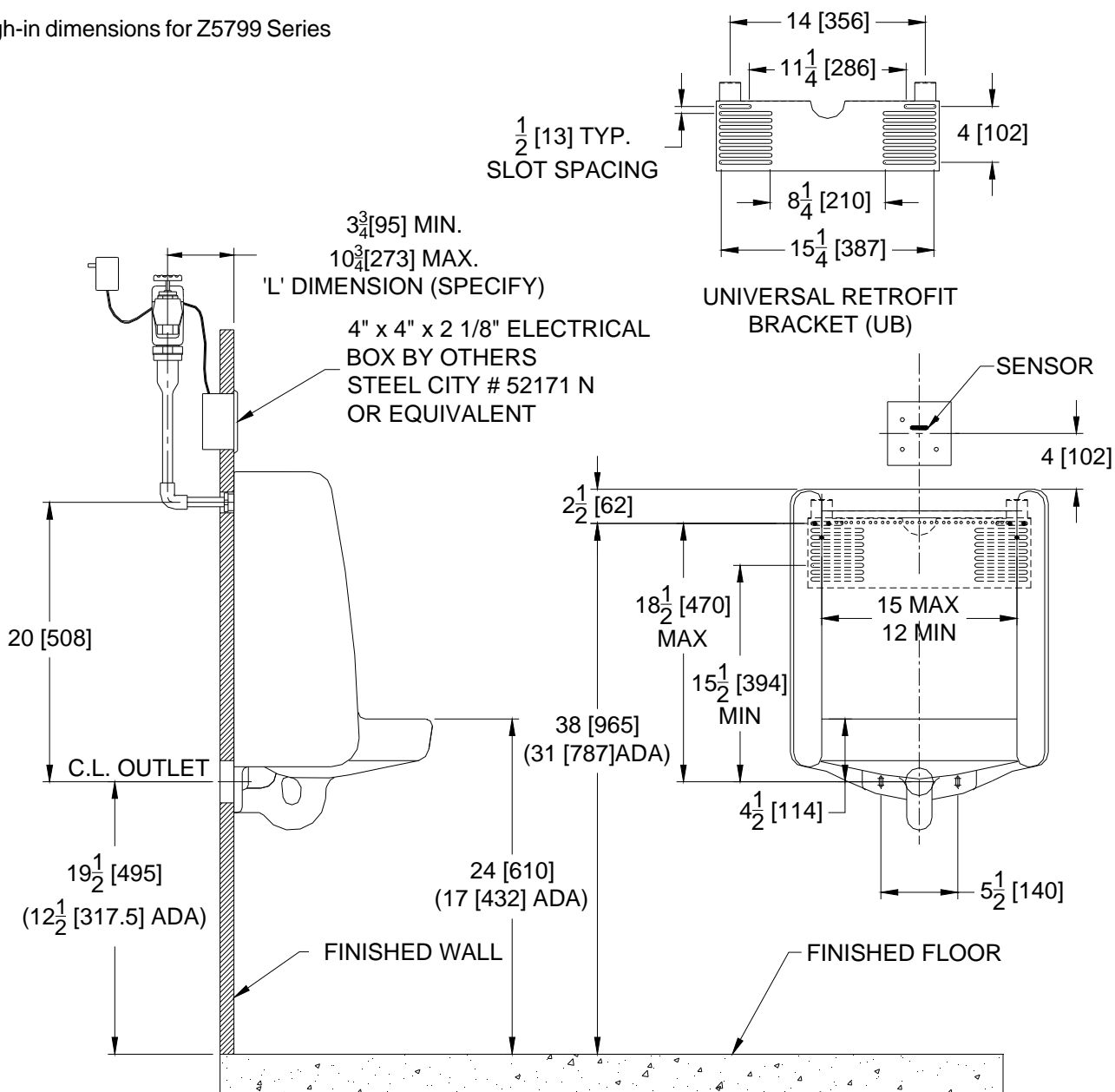


Z5799

"The Pint®" 1/8 gpf, EcoVantage®, Ultra Low Consumption, Concealed Urinal System Rough-In

TAG _____

Rough-in dimensions for Z5799 Series



These dimensions and specifications are subject to change without notice.

Fixture dimensions meet ANSI/ASME standard A112.19.2 and CAN/CSA B45 requirements.

Meets the American Disabilities Guidelines and ANSI A117.1 requirements when urinal is installed 17" [432 mm] from finished floor.



ZURN INDUSTRIES, LLC. ♦ COMMERCIAL BRASS OPERATION ♦ 5900 ELWIN BUCHANAN DRIVE ♦ SANFORD NC 27330
Phone: 1-800-997-3876 ♦ Fax: 919-775-3541 ♦ World Wide Web: www.zurn.com
In Canada: ZURN INDUSTRIES LIMITED ♦ 3544 Nashua Drive ♦ Mississauga, Ontario L4V1L2 ♦ Phone: 905-405-8272 Fax: 905-405-1292

EcoVantage® and "The Pint®" are registered trademarks of Zurn Industries, LLC.