

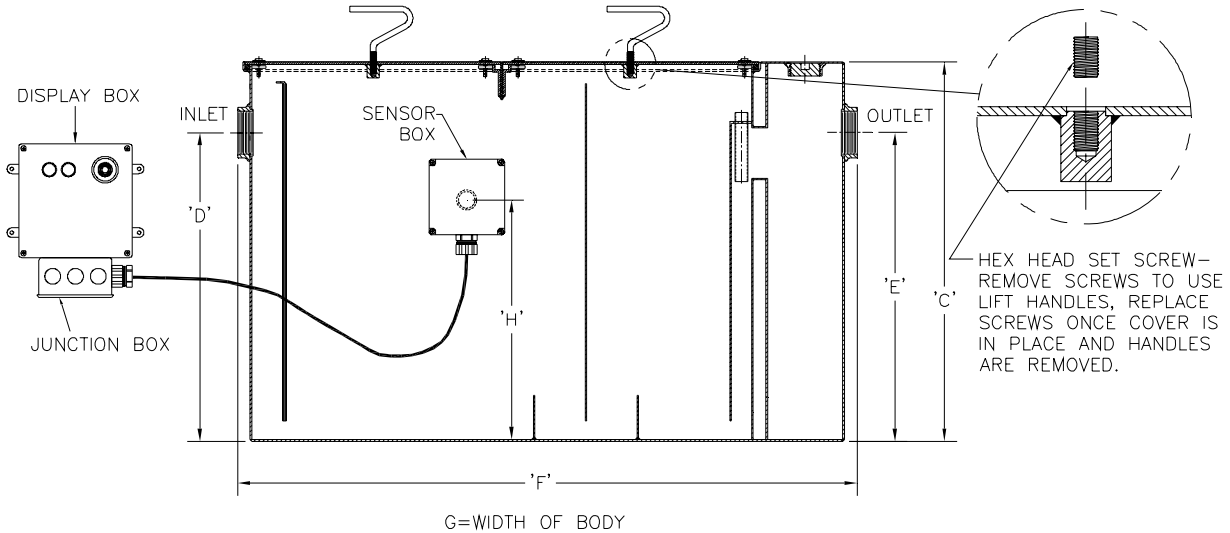


Z1172-UN

LARGE CAPACITY GREASE INTERCEPTOR WITH USER NOTIFICATION SYSTEM

SPECIFICATION SHEET
TAG _____

Dimensional Data (inches and [mm]) are Subject to Manufacturing Tolerances and Change Without Notice



Size	Inlet/ Outlet Size	Flow Rate G.P.M. [L]	Capacity		Approx. Wt. Lbs. [kg]	Dimensions in Inches [mm]				
			Water Gal. [L]	Grease Lbs. [kg]		C	D/E	F	G	H
900	3 [76]	75 [284]	65 [246]	150 [68]	316 [143]	22-3/4 [578]	18-1/2 [470]	36 [914]	28-5/8 [727]	11-1/4 [286]
1000		100 [378]	110 [416]	200 [91]	408 [185]	27 [686]	23 [584]	42-3/4 [1086]	33-5/8 [854]	16-1/8 [410]
1100		125 [472]	150 [567]	250 [114]	749 [340]	30-1/8 [765]	24-1/2 [622]	49-1/4 [1251]	40 [1016]	16-5/16 [414]
1200	4 [102]	150 [567]	195 [737]	300 [136]	856 [389]	30-3/4 [781]	25-1/4 [641]	56 [1422]	41-5/8 [1057]	18-1/16 [459]
1300		200 [756]	270 [1021]	400 [182]	1016 [461]	35-1/2 [902]	29-7/8 [759]	61 [1549]	43-5/8 [1108]	21-7/8 [556]
1400	5 [127]	250 [945]	465 [1758]	500 [227]	1384 [628]	41 [1041]	36 [914]	71 [1803]	51-5/8 [1311]	28-9/16 [725]
1500		300 [1134]	665 [2514]	600 [272]	1770 [804]	46-1/4 [1175]	39-5/8 [1006]	80 [2032]	58-5/8 [1489]	32-1/2 [826]
1600	6 [152]	350 [1323]	865 [3278]	700 [318]	2096 [951]	50-1/2 [1283]	43-7/8 [1114]	87 [2210]	63-5/8 [1616]	35-7/8 [911]
1700		400 [1512]	1095 [4139]	800 [363]	2440 [1108]	54-1/4 [1378]	47-5/8 [1210]	94 [2388]	67 [1702]	39-3/4 [1010]
1800		450 [1701]	1280 [4838]	900 [409]	2710 [1230]	55-1/4 [1403]	48-5/8 [1235]	100 [2540]	72 [1829]	40-7/8 [1038]
1900		500 [1890]	1440 [5443]	1000 [454]	2857 [1297]	57-1/4 [1454]	51-5/8 [1311]	104 [2642]	74 [1880]	43-5/8 [1108]

ENGINEERING SPECIFICATION: ZURN Z1172-UN

Large capacity Acid Resistant Coated interior and exterior fabricated steel grease interceptor, rated at ___ GPM and ___ Lbs. grease capacity, with internal air relief by-pass, bronze cleanout plug and visible double wall trap seal with removable pressure equalizing/flow diffusing baffle. Gasketed non-skid secured covers with removable lift handles, complete with flow control fitting. Includes encased fiberglass sensor box containing an electronic grease level sensor (specify right or left side)*, a fiberglass display box with one green power light, red grease level light, audio alarm and junction box. Regularly furnished with inlet and outlet in high position.

OPTIONS (Check/specify appropriate options)

PREFIXES

- ___ Z Acid Resistant Coated Fabricated Steel*
- ___ ZS All Type 304 Fabricated Stainless Steel

SUFFIXES

- ___ -AL Aluminum Cover
- ___ -L Angle type (Z1108-L) flow control device.
- ___ -PW Plug Wrench

Note:
 Sizes 900 and 1000 require 1 cover.
 Sizes 1100 thru 1600 require 2 covers.
 Sizes 1700 thru 1900 require 3 covers.

Note:

- * 1. Sensor box is mounted on the left or right hand side of the unit when facing inlet (must be specified).
2. Power supply 120V GFCI.
3. Recommended Installations: Sitting on the floor or recessed in a pit only. (A pit installation requires that a drain or sump pump be installed to keep the pit relatively dry).
4. Location of inlet from bottom of interceptor cannot be changed.

REV. B	DATE: 10/21/10	C.N. NO. 111929
DWG. NO. 82336	PRODUCT NO. Z1172-UN	

*REGULARLY FURNISHED UNLESS OTHERWISE SPECIFIED