



Z5681

Extra Heavy-Duty Stainless Steel, ZurnSHIELD™ Powder Coated Wall Hung Flush Valve Toilet TAG



Z5681 ZurnSHIELD™ Coated Heavy-Duty Wall Bowl

- Load tested to withstand 750 lbs. heavy duty load rating using the Zurn (-XH) carrier or 1000 lbs. bariatric load rating using the Zurn (-XB) carrier when tested in accordance with ASME/ANSI A112.19.12 standards.
- Paired system performance is guaranteed when installed with Zurn extra heavy-duty (-XH) or bariatric (-XB) closet carrier, thus eliminating risk of catastrophic load failure.
- 1.6 gallons of water per flush (6 Lpf)
- ZurnSHIELD™ powder coated exterior surface
- Brushed stainless steel finish in water contact area of sump
- Manufactured of type 304 stainless steel
- Seamless construction
- 11" x 8" large water spot
- 1-1/2" top spud connection
- 3-1/2" trap seal depth
- Elongated open front, ZurnSHIELD™ seat
- Seat is molded with integral self-centering, non-shift safety bumpers
- Optional brushed stainless steel finish (see model number Z5680)
- Shipping weight: 50 lbs.

Engineering Specification: Z5681 ZurnSHIELD™

Powder Coated Extra Heavy-Duty Stainless Steel Wall Mounted Toilet

ZurnSHIELD™ powder coated stainless steel extra heavy duty wall mounted 1.6 gpf (6 Lpf) low consumption siphon jet toilet with custom elongated seat. Toilet is seamlessly welded #16 gage, type 304 stainless steel with white ZurnSHIELD™ powder coated exterior, brushed stainless steel finish in water contact area of sump, elongated rim and 1-1/2" top spud inlet connection. Matching elongated seat offers ZurnSHIELD™ protection and is designed with integral self-centering safety bumpers that prevent unwanted patient weight shifts. Toilet system is load tested to withstand up to 750 lbs. when installed with the Zurn (-XH) carrier system, or up to 1,000 lbs. using the Zurn (-XB) carrier system without significant deflection or risk of catastrophic failure.

*ZurnSHIELD™ protects the fixture and seat by inhibiting the growth of stain and odor causing mold mildew and bacteria, thus reducing the amount of time, chemicals and water to clean the seat.

Recommended Heavy-Duty Carrier System:

- Z1201-N-XH:** Adjustable horizontal 750 lb. extra heavy-duty siphon jet water closet carrier system.
- Z1202-N-XH:** Adjustable vertical 750 lb. extra heavy-duty siphon jet water closet carrier system.
- Z1201-N-XB:** Adjustable horizontal 1,000 lb. bariatric siphon jet water closet carrier system.
- Z1202-N-XB:** Adjustable vertical 1,000 lb. bariatric siphon jet water closet carrier system.

Recommended Trim:

- Z6000AV-WS1** AquaVantage® 'AV' low consumption 1.6 gpf exposed closet flush valve.

Note: To ensure system performance minimum running water pressure = 25 PSI

These dimensions and specifications are subject to change without notice.

Fixture dimensions meet ANSI/ASME standard A112.19.2 and CAN/CSA B45 requirements.

Meets the American Disabilities Guidelines and ANSI A117.1 requirements when installed according to these requirements.



This space is for Architectural/engineering Approval

See Zurn One Systems for suggested packages.

ZURN INDUSTRIES, LLC. ♦ COMMERCIAL BRASS OPERATION ♦ 5900 ELWIN BUCHANAN DRIVE ♦ SANFORD NC 27330

Phone: 1-800-997-3876 ♦ Fax: 919-775-3541 ♦ World Wide Web: www.zurn.com

In Canada: ZURN INDUSTRIES LIMITED ♦ 3544 Nashua Drive ♦ Mississauga, Ontario L4V1L2 ♦ Phone: 905-405-8272 Fax: 905-405-1292

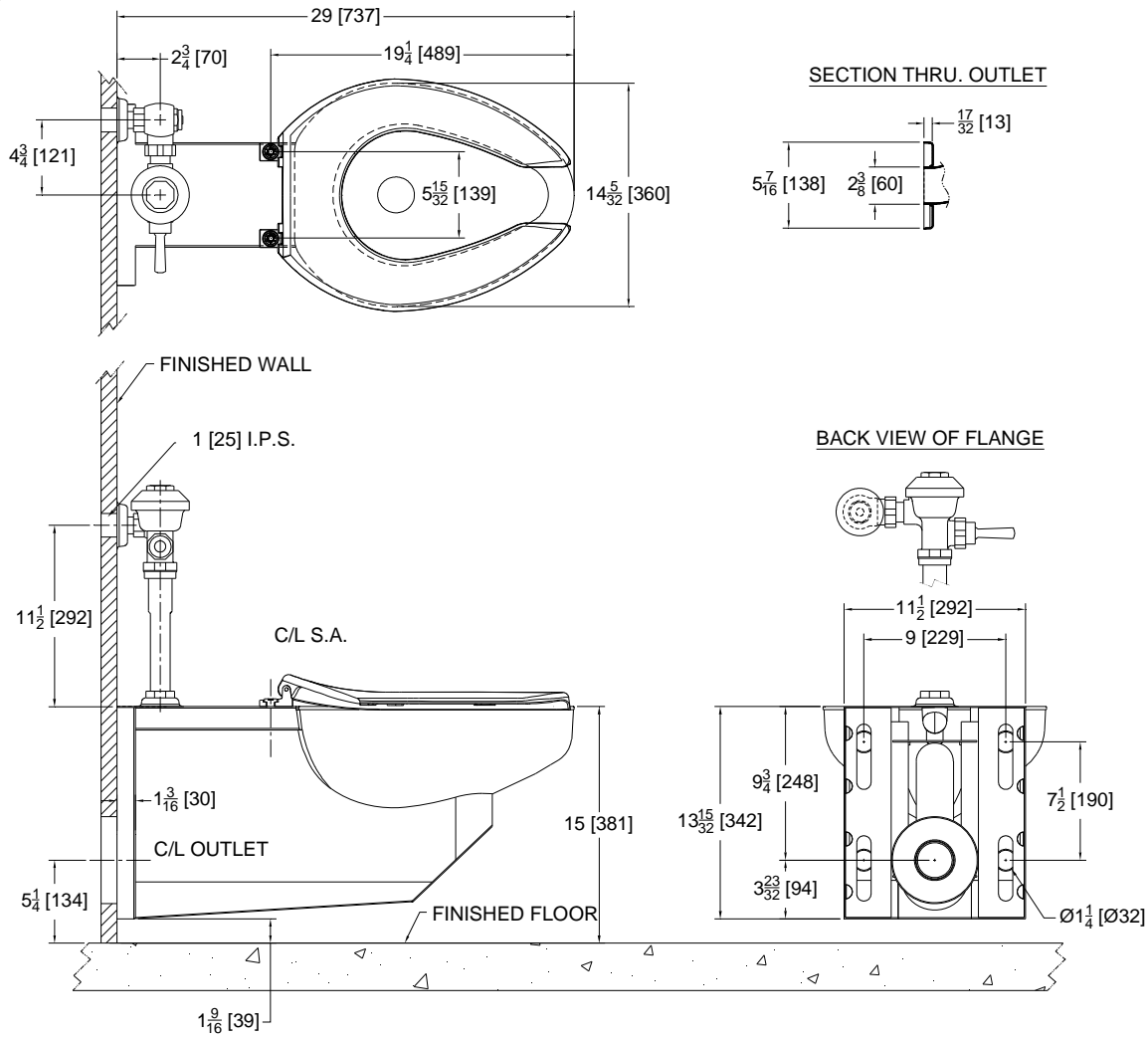


Z5681

Extra Heavy-Duty Stainless Steel, ZurnSHIELD™ Powder Coated Wall Hung Flush Valve Toilet TAG

Rough-in dimensions for Z5680 and Z5681 Series

- Z5680 with top spud and brushed stainless steel finish.
- Z5681 with top spud and ZurnSHIELD™ powder coated finish. (Note: water contact area in bowl sump is uncoated)



These dimensions and specifications are subject to change without notice.

Fixture dimensions meet ANSI/ASME standard A112.19.2 and CAN/CSA B45 requirements.

Note: For ADA compliance, rim height should be installed 17" from finished floor.

Meets the American Disabilities Guidelines and ANSI A117.1 requirements when installed according to these requirements.



ZURN INDUSTRIES, LLC. ♦ COMMERCIAL BRASS OPERATION ♦ 5900 ELWIN BUCHANAN DRIVE ♦ SANFORD NC 27330
Phone: 1-800-997-3876 ♦ Fax: 919-775-3541 ♦ World Wide Web: www.zurn.com

In Canada: ZURN INDUSTRIES LIMITED ♦ 3544 Nashua Drive ♦ Mississauga, Ontario L4V1L2 ♦ Phone: 905-405-8272 Fax: 905-405-1292