

Application

Designed for installation on water lines to protect against both backsiphonage and backpressure of polluted water into the potable water supply. Designed for use in fire protection systems. The Model 700FP shall provide protection where a potential health hazard does not exist.

Standards Compliance

- UL® Classified
- ASSE® Listed 1024
- CSA® Certified B64.6
- C-UL® Classified

Materials

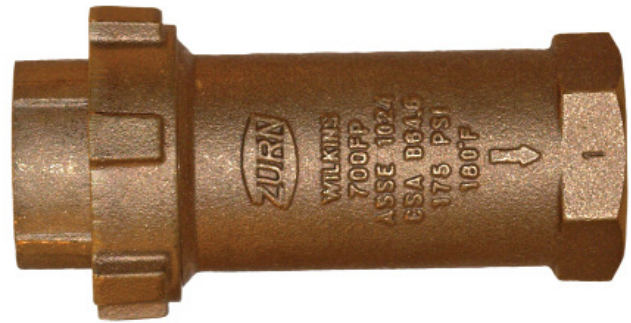
Main valve body Cast Bronze ASTM B 584
 Elastomers Buna Nitrile (FDA approved)
 Silicone (FDA approved)
 EPDM (FDA approved)
 Polymers Delrin®, NSF Listed
 Springs Stainless Steel, 300 Series

Connections Legend

U = Indicates location of "union" connection
 FNPT = Female National Pipe Tapered Thread
 FC = Female Copper Sweat
 FBSPP = Female British Standard Pipe Parallel Thread
 FMTC = Female Meter Thread Connection

Features

Sizes: 1", 1 1/4", 1 1/2"
 Max. pressure: 175 PSI
 Max. temp: 180°F
 Connections: Threaded ANSI B 1.20.1
 Copper sweat ANSI B 16.22
 (1-1/2" only)



Accessories

- Repair kit (RK1-700FP)
- Thermal expansion tank (Model XT)

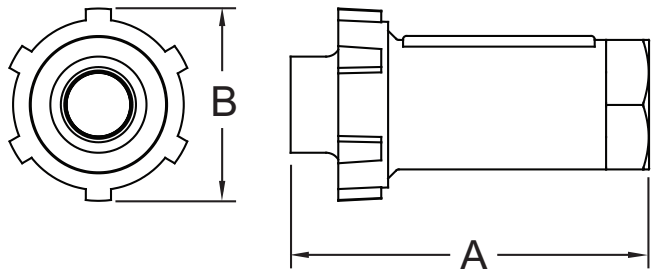
Configurations

FEMALE UNION INLET X FEMALE OUTLET		
INLET (UNION)	OUTLET	PART NUMBER
1" FNPT	1" FNPT	1UFX1F-700FP
1-1/4" FNPT	1-1/4" FNPT	114UFX114F-700FP
1-1/2" FNPT	1-1/2" FNPT	112UFX112F-700FP
1-1/4" FMTC*	1-1/4" FNPT	114UFMX114F-700FP
1-1/4" FMTC*	1" FNPT	114UFMX1F-700FP
1-1/4" FBSPP	1-1/4" FBSPP	114UFX114F-700FPBS
1-1/2" FBSPP	1-1/2" FBSPP	112UFX112F-700FPBS
1-1/2" FC	1-1/2" FNPT	112UFCX112F-700FP

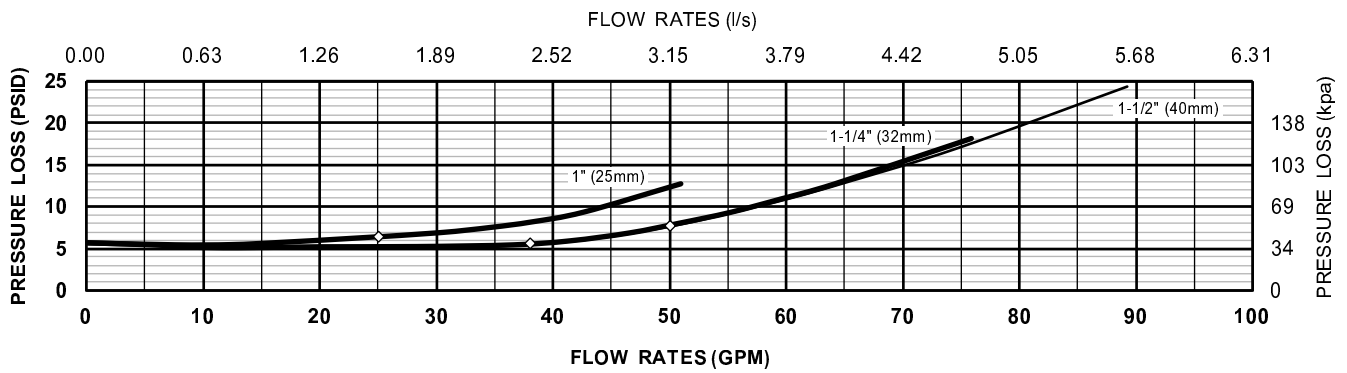
*1-1/4" NPSH threads fit on 1" water meters

Dimensions & Weights (do not include pkg.)

MODEL SIZE		DIMENSIONS				WEIGHT	
		A		B			
in.	mm	in.	mm	in.	mm	lbs.	kg
1	25	6 5/16	160	3 3/8	86	3.6	1.6
1 1/4	32	6 5/16	160	3 3/8	86	3.4	1.5
1 1/2	40	6 5/16	160	3 3/8	86	3.3	1.5



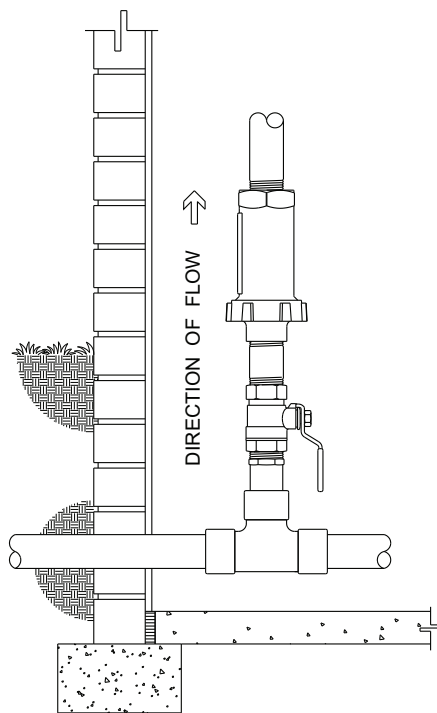
MODEL 700FP, 1", 1-1/4" & 1-1/2" (STANDARD & METRIC)



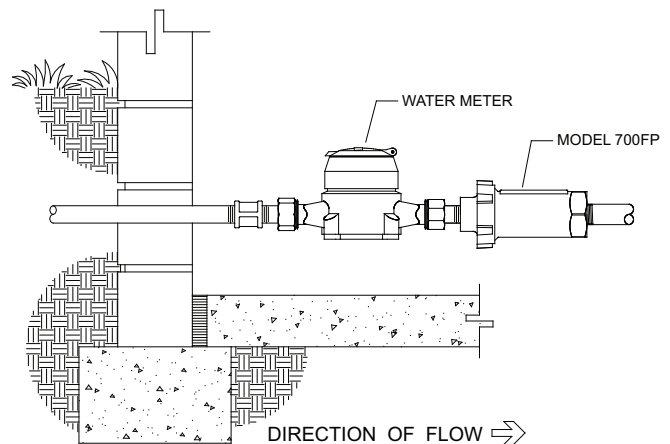
Typical Installation

Local codes shall govern installation requirements. Unless otherwise specified, the installation shall be in accordance with the manufacturer’s instructions and the latest edition of the Uniform Plumbing Code. The installation shall be made so that no part of the unit can be submerged.

Capacity thru Schedule 40 Pipe (GPM)				
Pipe size	5 ft/sec	7.5 ft/sec	10 ft/sec	15 ft/sec
1"	13	20	27	40
1 1/4"	23	35	47	70
1 1/2"	32	48	63	95
2"	52	78	105	167



VERTICAL INSTALLATION



INDOOR INSTALLATION

Specifications

The Dual Check Valve Backflow Preventer shall be ASSE® Listed 1024. The main body shall be cast bronze (ASTM B 584), the check assemblies shall be DELRIN®. The seal ring and o-rings shall be Buna Nitrile or Silicone. The Dual Check Valve shall be a ZURN WILKINS Model 700FP.