

Application

Designed for installation on potable water lines to protect against piping system deterioration caused by galvanic and stray current corrosion. A dielectric fitting is necessary where dissimilar metals are used in piping systems.

Materials

Body & flanges	Steel w/Galvanized Coat
Bolts & nuts	Steel w/Galvanized Coat
Tailpiece	Brass
Insulator	Nylon
Gaskets	EPDM (Standard) Viton (High Temp)

Features

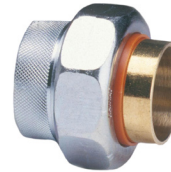
Sizes:	1/2", 3/4", 1", 1 1/4", 1 1/2", 2", 2 1/2", 3"
Maximum working water pressure	250 PSI
Maximum working water temperature	180°F
Thread connections	ANSI B 1.20.1
Copper connections	ANSI B 16.22



MODEL DU



MODEL DUC (2 1/2" & 3")



MODEL DUC



MODEL DUM

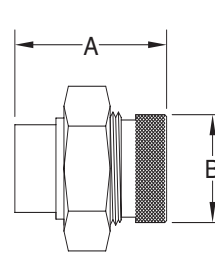
Options

- DUBI - black iron oxide coating (female iron pipe by female iron pipe). For gas service.

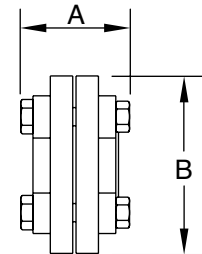
Dimensions & Weights (do not include pkg.)

FEMALE IRON PIPE BY FEMALE COPPER SOLDER JOINT								
PART NUMBER	DIMENSIONS						WEIGHT	
	INLET SIZE	OUTLET SIZE	A		B		lbs.	kg
12-DUC	1/2"	1/2"	1 13/16	46	1	25	0.4	0.2
34-DUC	3/4"	3/4"	2	51	1 1/4	32	0.5	0.2
34-DU12C	3/4"	1/2"	1 13/16	46	1 1/4	32	0.5	0.2
1-DUC	1"	1"	2 1/4	57	1 1/2	38	0.6	0.3
114-DUC	1 1/4"	1 1/4"	2 13/32	61	1 7/8	48	0.8	0.4
112-DUC	1 1/2"	1 1/2"	2 1/2	64	2 5/32	55	1.3	0.6
2-DUC	2"	2"	2 15/16	75	2 25/32	71	2.5	1.1
FLANGED FEMALE IRON PIPE BY FEMALE COPPER SOLDER JOINT								
212-DUC	2 1/2"	2 1/2"	3 5/8	92	6	152	13	5.9
3-DUC	3"	3"	3 5/8	92	6 11/16	170	15	6.8

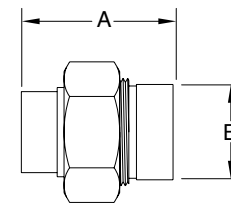
FEMALE IRON PIPE BY FEMALE BRASS PIPE								
PART NUMBER	DIMENSIONS						WEIGHT	
	INLET SIZE	OUTLET SIZE	A		B		lbs.	kg
12-DU	1/2"	1/2"	2	51	1	25	0.5	0.2
34-DU	3/4"	3/4"	2 1/4	57	1 1/4	32	0.75	0.3
1-DU	1"	1"	2 1/2	64	1 1/4	32	1	0.5
114-DU	1 1/4"	1 1/4"	2 17/32	64.3	1 13/16	46	1.4	0.6
112-DU	1 1/2"	1 1/2"	2 15/16	75	2 3/16	56	3	1.4
2-DU	2"	2"	3	76	2 3/4	70	3.87	1.8



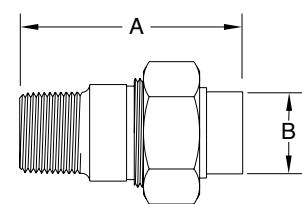
MODEL DU & DUBI



MODEL DUC (2 1/2" & 3")



MODEL DUC



MODEL DUM

MALE IRON PIPE BY FEMALE COPPER SOLDER JOINT								
PART NUMBER	INLET SIZE	OUTLET SIZE	A		B		WEIGHT	
			in.	mm	in.	mm	lbs.	kg
12-DUM	1/2"	1/2"	2 3/4	70	13/16	21	0.5	0.2
34-DUM	3/4"	3/4"	3	76	1	25	0.6	0.3
34-DUM12C	3/4"	1/2"	2 3/4	70	13/16	21	0.7	0.3

Specifications

The Dielectric Union shall be rated for 250 psi (ANSI B 16.39). Flanged fittings shall be rated for 175 psi (ANSI B16.42 or B 16.24). The body and nut shall be steel with galvanized coat, the insulator shall be nylon, the tailpiece shall be brass and the gaskets shall be EPDM (standard) or viton (high temp). The Dielectric Union shall be a ZURN WILKINS Model DU, DUC or DUM.