

ZURN Model DUXL, DUXLC AND DUXLM Dielectric Pipe Fittings

Application

Ideal for use where Lead-Free* fittings are required. Designed for installation on potable water lines to protect against piping system deterioration caused by galvanic and stray current corrosion. A dielectric fitting is necessary where dissimilar metals are used in piping systems.

Standards Compliance

- Certified to NSF/ANSI 372 by IAPMO R&T*
*(0.25% MAX. WEIGHTED AVERAGE LEAD CONTENT)

Materials

Body	Steel w/Zinc Coat
Union Nut	Steel w/Zinc Coat
Bolts and Nuts	Steel w/Zinc Coat
Flanges (2-1/2" & 3")	Cast Steel
Tailpiece	Low Lead Brass
Insulator	Nylon
Gaskets	EPDM
Body (DUBI)	Steel w/Black Iron Oxide Coat
Tailpiece (DUBI)	Steel w/Black Iron Oxide Coat
Union Nut (DUBI)	Steel w/Black Iron Oxide Coat

Features

Sizes:	1/2", 3/4", 1", 1 1/4", 1 1/2", 2", 2 1/2", 3"
Maximum working water pressure (threaded fittings)	250 PSI
Maximum working water pressure (flanged fittings)	175 PSI
Maximum working water temperature	180°F
Thread connections	ANSI B 1.20.1
Copper connections	ANSI B 16.22

Dimensions & Weights (do not include pkg.)

FEMALE IRON PIPE BY FEMALE COPPER SOLDER JOINT								
PART NUMBER	DIMENSIONS						WEIGHT	
	INLET SIZE	OUTLET SIZE	A		B		lbs.	kg
			in.	mm	in.	mm		
12-DUXLC	1/2"	1/2"	1 13/16	46	1	25	0.4	0.2
34-DUXLC	3/4"	3/4"	2	51	1 1/4	32	0.5	0.2
34-DUXL12C	3/4"	1/2"	1 13/16	46	1 1/4	32	0.5	0.2
1-DUXLC	1"	1"	2 1/4	57	1 1/2	38	0.6	0.3
114-DUXLC	1 1/4"	1 1/4"	2 13/32	61	1 7/8	48	0.8	0.4
112-DUXLC	1 1/2"	1 1/2"	2 1/2	64	2 5/32	55	1.3	0.6
2-DUXLC	2"	2"	2 15/16	75	2 25/32	71	2.5	1.1
FLANGED FEMALE IRON PIPE BY FEMALE COPPER SOLDER JOINT								
212-DUXLC	2 1/2"	2 1/2"	3 5/8	92	6	152	13	5.9
3-DUXLC	3"	3"	3 5/8	92	6 11/16	170	15	6.8

MALE IRON PIPE BY FEMALE COPPER SOLDER JOINT								
PART NUMBER	INLET SIZE	OUTLET SIZE	A		B		WEIGHT	
			in.	mm	in.	mm	lbs.	kg
12-DUXLM	1/2"	1/2"	2 3/4	70	13/16	21	0.5	0.2
34-DUXLM	3/4"	3/4"	3	76	1	25	0.6	0.3
34-DUXLM12C	3/4"	1/2"	2 3/4	70	13/16	21	0.7	0.3

Specifications

The Dielectric Union shall be certified to NSF/ANSI 372, rated for 250 psi (ANSI B 16.39). Flanged fittings shall be rated for 175 psi (ANSI B16.42 or B 16.24). The body and nut shall be steel with galvanized coat, the insulator shall be nylon, the tail-piece shall be low lead brass and the gaskets shall be EPDM. The Dielectric Union shall be a ZURN WILKINS Model DUXL, DUXLC or DUXLM.



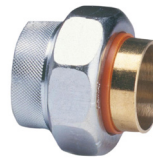
MODEL DUXL



MODEL DUXLC (2 1/2" & 3")



XL LEAD FREE



MODEL DUXLC

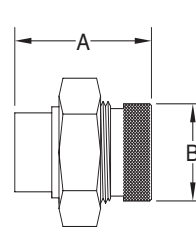


MODEL DUXLM

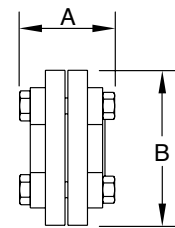


Options

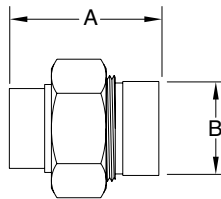
- DUBI - Female iron pipe by female iron pipe with black iron oxide coating for gas service only (1/2"-2")



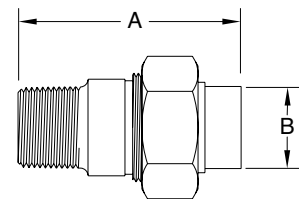
MODEL DUXL & DUBI



MODEL DUXLC (2 1/2" & 3")



MODEL DUXLC



MODEL DUXLM

DUXL - FEMALE IRON PIPE BY FEMALE BRASS PIPE								
DUBI - FEMALE IRON PIPE BY FEMALE IRON PIPE								
PART NUMBER	DIMENSIONS						WEIGHT	
	INLET SIZE	OUTLET SIZE	A		B		lbs.	kg
			in.	mm	in.	mm		
12-DUXL/DUBI	1/2"	1/2"	2	51	1	25	0.5	0.2
34-DUXL/DUBI	3/4"	3/4"	2 1/4	57	1 1/4	32	0.75	0.3
1-DUXL/DUBI	1"	1"	2 1/2	64	1 1/4	32	1	0.5
114-DUXL/DUBI	1 1/4"	1 1/4"	2 17/32	64.3	1 13/16	46	1.4	0.6
112-DUXL/DUBI	1 1/2"	1 1/2"	2 15/16	75	2 3/16	56	3	1.4
2-DUXL/DUBI	2"	2"	3	76	2 3/4	70	3.87	1.8