



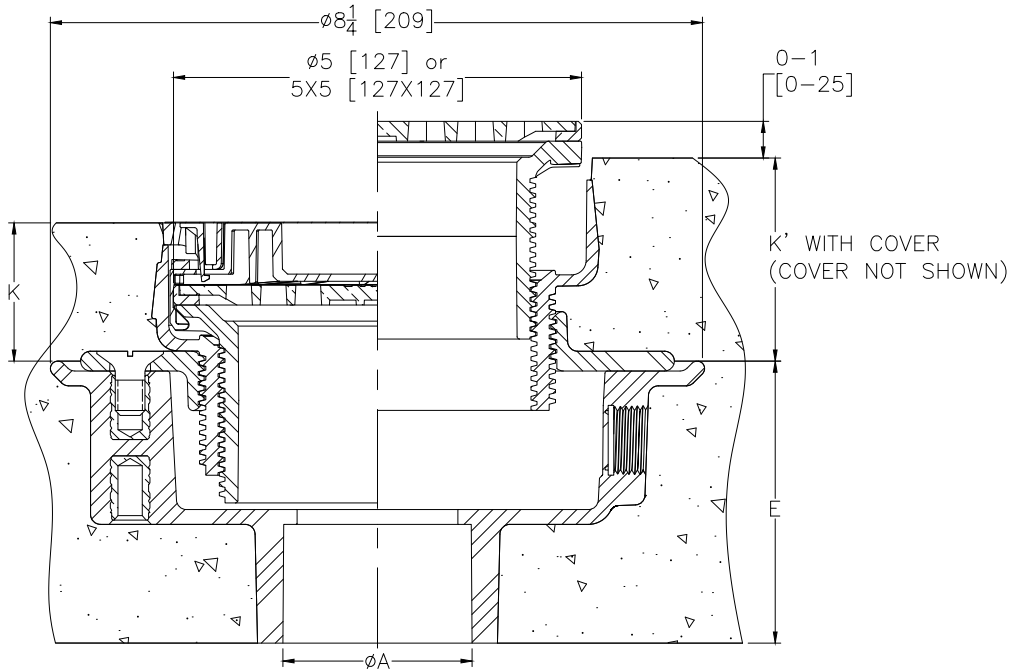
EZ1™-5

5" Top Assembly Adjustable Floor Drain with EZ1™ Technology

SPECIFICATION SHEET

TAG _____

Design and Dimensional Data (inches and [mm]) are Subject to Manufacturing Tolerances and Change Without Notice



Note:
Minimum K Dimension is Only Possible with -LR Option when using Square Strainer

Dimensions in Inches [mm]								Approx. Wt. Lbs [kg]	Strainer Open Area Sq. In. [cm ²]	Strainer Type
Product Number		A	E	K		K'				
PVC Body	ABS Body	Pipe Size	Body Height	Min	Max	Min	Max			
EZ1-PV2	EZ1-AB2	2-3 [51-76]	3-9/16 [91]	1-25/32 [45]	2-31/32 [75]	2-9/32 [58]	3-15/32 [88]	4 [2]	6-1/4 [40]	Nickel Bronze Round
EZ1-PV3	EZ1-AB3	3-4 [76-102]	3-9/16 [91]	1-25/32 [45]	2-31/32 [75]	2-9/32 [58]	3-15/32 [88]	4 [2]	6-1/4 [40]	Nickel Bronze Round
EZ1-PV4	EZ1-AB4	4 [102]	3-13/16 [97]	1-25/32 [45]	2-31/32 [75]	2-9/32 [58]	3-15/32 [88]	5 [2]	6-1/4 [40]	Nickel Bronze Round
EZ1-PV2-ST	EZ1-AB2-ST	2-3 [51-76]	3-9/16 [91]	1-31/32 [50]	3-1/8 [79]	2-15/32 [63]	3-5/8 [92]	5 [2]	9 [58]	Nickel Bronze Square
EZ1-PV3-ST	EZ1-AB3-ST	3-4 [76-102]	3-9/16 [91]	1-31/32 [50]	3-1/8 [79]	2-15/32 [63]	3-5/8 [92]	5 [2]	9 [58]	Nickel Bronze Square
EZ1-PV4-ST	EZ1-AB4-ST	4 [102]	3-13/16 [97]	1-31/32 [50]	3-1/8 [79]	2-15/32 [63]	3-5/8 [92]	6 [3]	9 [58]	Nickel Bronze Square
EZ1-PV2-SS	EZ1-AB2-SS	2-3 [51-76]	3-9/16 [91]	1-25/32 [45]	2-31/32 [75]	2-9/32 [58]	3-15/32 [88]	4 [2]	6-1/4 [40]	Stainless Steel Round
EZ1-PV3-SS	EZ1-AB3-SS	3-4 [76-102]	3-9/16 [91]	1-25/32 [45]	2-31/32 [75]	2-9/32 [58]	3-15/32 [88]	4 [2]	6-1/4 [40]	Stainless Steel Round
EZ1-PV4-SS	EZ1-AB4-SS	4 [102]	3-13/16 [97]	1-25/32 [45]	2-31/32 [75]	2-9/32 [58]	3-15/32 [88]	5 [2]	6-1/4 [40]	Stainless Steel Round
EZ1-PV2-ST-SS	EZ1-AB2-ST-SS	2-3 [51-76]	3-9/16 [91]	1-31/32 [50]	3-1/8 [79]	2-15/32 [63]	3-5/8 [92]	5 [2]	9 [58]	Stainless Steel Square
EZ1-PV3-ST-SS	EZ1-AB3-ST-SS	3-4 [76-102]	3-9/16 [91]	1-31/32 [50]	3-1/8 [79]	2-15/32 [63]	3-5/8 [92]	5 [2]	9 [58]	Stainless Steel Square
EZ1-PV4-ST-SS	EZ1-AB4-ST-SS	4 [102]	3-13/16 [97]	1-31/32 [50]	3-1/8 [79]	2-15/32 [63]	3-5/8 [92]	6 [3]	9 [58]	Stainless Steel Square

ENGINEERING SPECIFICATION:

Zurn EZ1™ floor and shower drain, PVC or ABS solvent weld body with bottom outlet and 1/2" [13] trap primer connection knock-out plug, combination invertible membrane clamp and adjustable collar with seepage slots and top assembly. EZ1™ drainage series is engineered to simplify product installation, comprised of concrete shield, up to 1" [25] of vertical post pour adjustment, pre-packaged shims for tilt correction and integrated self-contained square or round light duty strainer in nickel bronze or stainless steel with rough-in cover for protection during concrete pour.

SUFFIXES

- | | | | |
|----------|---------------------------------|-----------|--|
| ____ -EF | 3/4 [19] Extension Frame | ____ -TSP | Trap Seal Protection Device (Size Matches Drain Outlet Selected) (See Z1072) |
| ____ -LR | Low Rough-In (Square Only) | ____ -U | 2 - 3-1/4 [51-83] High Post-Pour Extension Adapter |
| ____ -SA | Stabilizer Assembly (See Z1035) | ____ -UP | 1-3/4 [44] Pre-Pour Adjustment Extension Adapter |
| ____ -SQ | Stabilizer Q-Deck (See Z1035-Q) | ____ -VP | Vandal-Proof Secured Top |
| ____ -SR | Stabilizer Ring | | |

⚠ **WARNING:** Cancer and Reproductive Harm - www.P65Warnings.ca.gov

⚠ **ADVERTENCIA:** Cáncer y daño reproductivo - www.P65Warnings.ca.gov

⚠ **AVERTISSEMENT:** Cancer et effets néfastes sur la reproduction - www.P65Warnings.ca.gov

Zurn Industries, LLC | Specification Drainage Operation
1801 Pittsburgh Avenue, Erie, PA 16502, Ph. 855.663.9876

In Canada | Zurn Industries Limited
7900 Goreway Drive, Unit 10, Brampton, Ontario L6T 5W6, Ph. 877.892.5216

www.zurn.com

Rev. G
Date: 12/29/2022
C.N. No. 144898
Patent zurn.com/patents
Prod. | Dwg. No. EZ1-5