



EZ1™-6

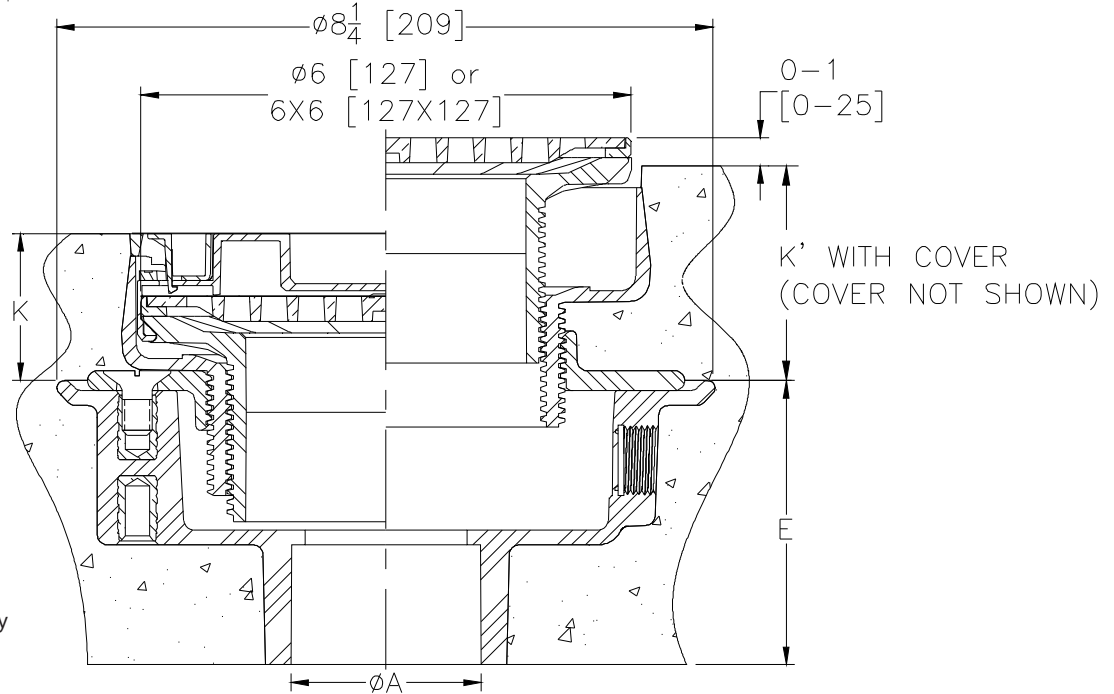
6" Top Assembly Adjustable Floor Drain with EZ1™ Technology

SPECIFICATION SHEET

TAG _____

**PATENT
PENDING**

Dimensional Data (inches and [mm]) are Subject to Manufacturing Tolerances and Change Without Notice



Note:
Minimum K Dimension is Only Possible with -LR Option

Dimensions in Inches [mm]								Approx. Wt. Lbs [kg]	Strainer Open Area Sq. In. [cm ²]	Strainer Type
Product Number		A	E	K		K'				
PVC Body	ABS Body	Pipe Size	Body Height	Min	Max	Min	Max			
EZ1-PV2-R6	EZ1-AB2-R6	2-3 [51-76]	3-9/16 [90]	1-7/8 [48]	3-1/16 [78]	2-3/8 [60]	3-9/16 [90]	5 [2]	9 [58]	Nickel Bronze Round
EZ1-PV3-R6	EZ1-AB3-R6	3-4 [76-102]	3-9/16 [90]	1-7/8 [48]	3-1/16 [78]	2-3/8 [60]	3-9/16 [90]	5 [2]	9 [58]	Nickel Bronze Round
EZ1-PV4-R6	EZ1-AB4-R6	4 [102]	3-13/16 [97]	1-7/8 [48]	3-1/16 [78]	2-3/8 [60]	3-9/16 [90]	5 [2]	9 [58]	Nickel Bronze Round
EZ1-PV2-S6	EZ1-AB2-S6	2-3 [51-76]	3-9/16 [90]	2-1/8 [54]	3-9/32 [83]	2-5/8 [67]	3-25/32 [96]	6 [3]	13 [84]	Nickel Bronze Square
EZ1-PV3-S6	EZ1-AB3-S6	3-4 [76-102]	3-9/16 [90]	2-1/8 [54]	3-9/32 [83]	2-5/8 [67]	3-25/32 [96]	6 [3]	13 [84]	Nickel Bronze Square
EZ1-PV4-S6	EZ1-AB4-S6	4 [102]	3-13/16 [97]	2-1/8 [54]	3-9/32 [83]	2-5/8 [67]	3-25/32 [96]	6 [3]	13 [84]	Nickel Bronze Square
EZ1-PV2-R6-SS	EZ1-AB2-R6-SS	2-3 [51-76]	3-9/16 [90]	1-7/8 [48]	3-1/16 [78]	2-3/8 [60]	3-9/16 [90]	5 [2]	10 [65]	Stainless Steel Round
EZ1-PV3-R6-SS	EZ1-AB3-R6-SS	3-4 [76-102]	3-9/16 [90]	1-7/8 [48]	3-1/16 [78]	2-3/8 [60]	3-9/16 [90]	5 [2]	10 [65]	Stainless Steel Round
EZ1-PV4-R6-SS	EZ1-AB4-R6-SS	4 [102]	3-13/16 [97]	1-7/8 [48]	3-1/16 [78]	2-3/8 [60]	3-9/16 [90]	5 [2]	10 [65]	Stainless Steel Round
EZ1-PV2-S6-SS	EZ1-AB2-S6-SS	2-3 [51-76]	3-9/16 [90]	2-1/8 [54]	3-9/32 [83]	2-5/8 [67]	3-25/32 [96]	6 [3]	13 [84]	Stainless Steel Square
EZ1-PV3-S6-SS	EZ1-AB3-S6-SS	3-4 [76-102]	3-9/16 [90]	2-1/8 [54]	3-9/32 [83]	2-5/8 [67]	3-25/32 [96]	6 [3]	13 [84]	Stainless Steel Square
EZ1-PV4-S6-SS	EZ1-AB4-S6-SS	4 [102]	3-13/16 [97]	2-1/8 [54]	3-9/32 [83]	2-5/8 [67]	3-25/32 [96]	6 [3]	13 [84]	Stainless Steel Square

ENGINEERING SPECIFICATION:

Zurn EZ1™ floor and shower drain, PVC or ABS solvent weld body with bottom outlet and 1/2" [13] trap primer connection knock-out plug, combination invertible membrane clamp and adjustable collar with seepage slots and top assembly. EZ1™ drainage series is engineered to simplify product installation, comprised of concrete shield, up to 1" [25] of vertical post pour adjustment, pre-packaged shims for tilt correction and integrated self-contained square or round light duty strainer in nickel bronze or stainless steel with rough-in cover for protection during concrete pour.

SUFFIXES

- ___-EF 3/4 [19] Extension Frame
- ___-LR Low Rough-In
- ___-SA Stabilizer Assembly (See Z1035)
- ___-SQ Stabilizer Q-Deck (See Z1035-Q)
- ___-SR Stabilizer Ring
- ___-TSP Trap Seal Protection Device (Size Matches Drain Outlet Selected) (See Z1072)
- ___-U 2 - 3-1/4 [51-83] High Post-Pour Extension Adapter
- ___-UP 1-3/4 [44] Pre-Pour Adjustment Extension Adapter
- ___-VP Vandal-Proof Secured Top
- ___-Y Sediment Bucket