



# Model F210 Check Valves

## Application

The Zurn F210 Fire Check Valve is a zone water check valve to prevent system reversal of flow; as required by systems including sprinkler standpipe systems and fire department connections.

## Materials

Body Casting	ASTM A 536 Ductile Iron
Seat	Bronze
Clapper	304 Stainless Steel
Plug	304 Stainless Steel
Gasket	EPDM Rubber

## Standards Compliance

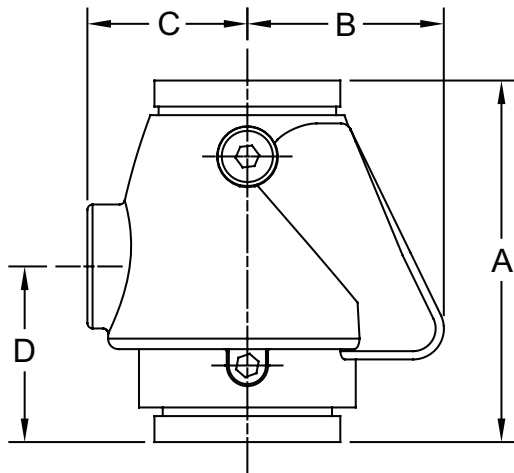
- UL® Listed
- C-UL® Listed
- FM® Approved

## Features

Sizes: 2", 2-1/2", 3", 4", 6", 8"  
Maximum Pressure: 300PSI



212-F210



## Dimensions & Weights (do not include pkg.)

SIZE in.	MODEL	DIMENSIONS (approximate)				Weight (lb.)
		A (in.)	B (in.)	C (in.)	D (in.)	
2	2-F210	6.65	2.50	2.75	3.25	5.5
2 1/2	212-F210	7.20	3.00	2.90	3.25	8.8
3	3-F210	7.80	3.50	3.00	3.25	13.0
4	4-F210	8.75	4.25	3.35	4.25	20.0
6	6-F210	10.75	4.75	4.13	6.00	42.0
8	8-F210	13.00	6.00	5.75	7.75	77.0

MODEL F210 SINGLE CHECK 2", 2-1/2" 3", 4", 6", & 8"

