



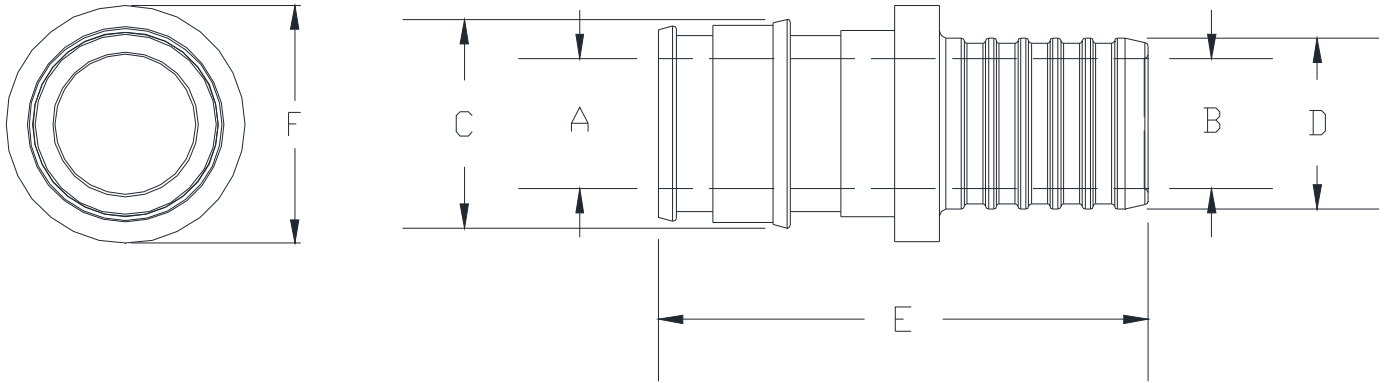
QEC_CGXNPK1

XL BRASS F1960 EXPANSION PEX TO CRIMP POLYBUTYLENE COUPLING

SPECIFICATION SHEET

TAG _____

Dimensional Data (inches and [mm]) are Subject to Manufacturing Tolerances and Change Without Notice



Part Number	XL Brass Expansion Coupling EX PEX x Crimp Polybutylene Size	Dimensions in Inches [mm]					
		A	B	C	D	E	F
QEC33CGXNPK1	1/2" EX PEX x 1/2" Polybutylene	0.38 [10]	0.37 [10]	0.61 [16]	0.50 [13]	1.43 [36]	0.69 [18]
QEC44CGXNPK1	3/4" EX PEX x 3/4" Polybutylene	0.60 [15]	0.59 [15]	0.87 [22]	0.72 [18]	1.67 [42]	0.95 [24]

Includes appropriate size crimp and expansion ring

Engineering Specification: Zurn PEX® XL-Low Lead Brass F1960 Expansion PEX to Crimp Polybutylene Coupling
 The QEC__CGXNPK1 is used with Zurn Non-Barrier Pex tubing in potable water applications. Not for use in reverse osmosis systems or in areas with known localized aggressive water chemistries. Manufactured from EcoBrass®, C69300. These fittings, as a system with Zurn PEX® tube and Zurn PEX reinforcing rings are pressure rated at 160 PSI at 73°F, 100 PSI at 180°F, and 80 PSI at 200°F. These fittings are 3rd Party certified as complying with the following standards: NSF/ANSI Standard 61, NSF/ANSI Standard 372 (Low Lead), ASTM F1960, CSA B137.5

Accessories

___ QEMT345 F1960 Manual Expansion Tool Kit - 1/2" to 1"