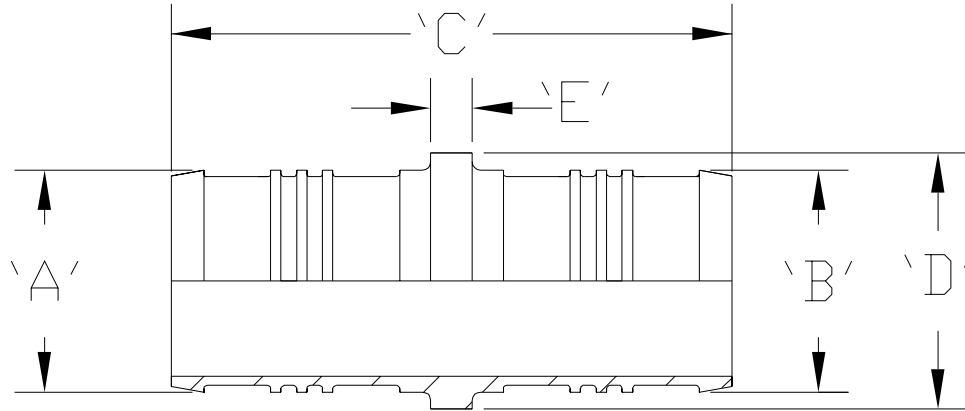




2" DZR Brass Coupling QQC__DZX Specification Sheet

Tag _____

Dimensional Data: Inches and [mm] are subject to manufacturing tolerances and change without notice.



Part Number	Description	'A'	'B'	'C'	'D'	'E'
QQC85DZX	2" Barb x 1" Barb Coupling	1.602" [40.7]	0.856" [21.7]	2.67" [67.8]	1.68" [42.7]	0.37" [9.4]
QQC86DZX	2" Barb x 1-1/4" Barb Coupling	1.602" [40.7]	1.045" [26.5]	3.02" [76.7]	1.68" [42.7]	0.37" [9.4]
QQC87DZX	2" Barb x 1-1/2" Barb Coupling	1.602" [40.7]	1.233" [31.3]	3.02" [76.7]	1.68" [42.7]	0.37" [9.4]
QQC88DZX	2" Barb x 2" Barb Coupling	1.602" [40.7]	1.602" [40.7]	3.37" [85.6]	1.68" [42.7]	0.37" [9.4]

Engineering Specification: ZurnPEX® 2" DZR brass barb coupling. The QQC__DZX is used to connect two separate pieces of PEX tubing. Large diameter fittings are made with dezincification resistant brass. These fittings, as a system with ZurnPEX® tubing, are pressure rated at 160 PSI at 73°F, 100 PSI at 180°F, and 80 PSI at 200°F. These fittings are listed by NSF as complying with the following standards: NSF/ANSI Standard 14, NSF/ANSI Standard 61, ASTM F877, and CSA B137.5.

Accessories

- ___ QCLP5X 1" QickClamp™ Ring
- ___ QCR5X 1" Copper Crimp Ring
- ___ QCR6X 1-1/4" Copper Crimp Ring
- ___ QCR7X 1-1/2" Copper Crimp Ring
- ___ QCR8X 2" Copper Crimp Ring

Rev.	Date: 11/14/08	C.N. No.99382
Dwg. No. 84022	Prod. No. QQC__DZX	