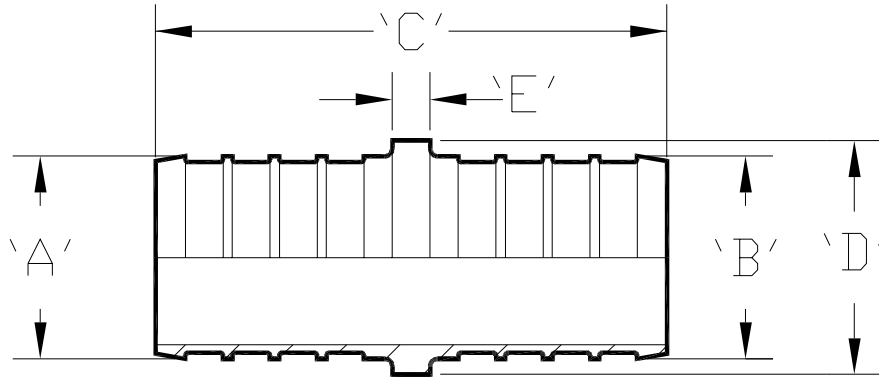




Brass Couplings QQC__X Specification Sheet

Tag _____

Dimensional Data: Inches and [mm] are subject to manufacturing tolerances and change without notice.



Part Number	Description	'A'	'B'	'C'	'D'	'E'
QQC22X	3/8" Barb x 3/8" Barb Coupling	0.345" [8.8]	0.345" [8.8]	1.38" [35.0]	0.44" [11.1]	0.13" [3.2]
QQC32X	1/2" Barb x 3/8" Barb Coupling	0.471" [12.0]	0.345" [8.8]	1.38" [35.0]	0.56" [14.3]	0.13" [3.2]
QQC33X	1/2" Barb x 1/2" Barb Coupling	0.471" [12.0]	0.471" [12.0]	1.38" [35.0]	0.56" [14.3]	0.13" [3.2]
QQC43X	3/4" Barb x 1/2" Barb Coupling	0.667" [16.9]	0.471" [12.0]	1.38" [35.0]	0.81" [20.6]	0.13" [3.2]
QQC44X	3/4" Barb x 3/4" Barb Coupling	0.667" [16.9]	0.667" [16.9]	1.38" [35.0]	0.81" [20.6]	0.13" [3.2]
QQC54X	1" Barb x 3/4" Barb Coupling	0.856" [21.7]	0.667" [16.9]	1.55" [39.2]	1.00" [25.4]	0.13" [3.2]
QQC55X	1" Barb x 1" Barb Coupling	0.856" [21.7]	0.856" [21.7]	1.72" [43.6]	1.00" [25.4]	0.13" [3.2]

Engineering Specification: ZurnPEX® brass couplings. The QQC__X can be used to transition between two different or similar sizes of Zurn PEX® tubing. These fittings, as a system with Zurn PEX® tube, are pressure rated at 160 PSI at 73°F, 100 PSI at 180°F, and 80 PSI at 200°F. These fittings are listed by NSF as complying with the following standards: NSF/ANSI Standard 14, NSF/ANSI Standard 61, ASTM F877, CSA B137.5, and ASTM F1807.

Accessories

- ___ QCLP2X 3/8" QuickClamp™ Crimp Ring
- ___ QCLP3X 1/2" QuickClamp™ Crimp Ring
- ___ QCLP4X 3/4" QuickClamp™ Crimp Ring
- ___ QCLP5X 1" QuickClamp™ Crimp Ring
- ___ QCR2X 3/8" Copper Crimp Ring
- ___ QCR3X 1/2" Copper Crimp Ring
- ___ QCR4X 3/4" Copper Crimp Ring
- ___ QCR5X 1" Copper Crimp Ring

Rev. A	Date: 05/11/08	C.N. No. 91634
Dwg. No. 67516		Prod. No. QQC__X