



## Model: Z.CS2.M

Zurn One Manual Wall Mounted Service Sink System with 6.5 GPF AquaVantage® Flush Valve with Bedpan Washer TAG

### Architectural/Engineering Specification:

Complete AquaVantage® 6.5 gpf manual actuated wall mounted service sink system with Z60843AV-BWN exposed, manually activated chrome plated closet flushometer with bedpan washer for either left or right hand supply, and Z5410 wall mounted vitreous china service sink with Z5977-NEO closet flange outlet gasket assembly kit manufactured by Zurn Industries.

### Product Features:

- 6.5 gpf (gallons per flush)
- ZurnSHIELD™ ceramic glaze to create a permanent surface that inhibits the growth of stain and odor causing mold, mildew and bacteria, thus minimizing the need for cleaning and water to cleanse the bowl.
- Wall mounted service sink
- Siphon jet flush action
- Integral flushing rim
- Water surface: 10" x 10"
- Vitreous china
- Diaphragm- type flushometer complete with Zurn's Go Blue® TPE, chloramine resistant, dual seal diaphragm with a clog resistant filtered by-pass.
- Non-hold open, dual seal handle
- High pressure vacuum breaker
- Adjustable tailpiece
- Contol stop with internal siphon guard protection, vandal resistant cap, sweat solder kit and cast wall flange with set screw



### Zurn One System Packout Includes:

#### Service Sink - Z5410:

Vitreous china, wall mounted blowout service sink with integral flushing rim, ZurnSHIELD™ ceramic glaze, and 1-1/2" top spud. Front & side stainless steel rim guards included

#### Flush Valve - Z60843AV-BWN:

Exposed, quiet diaphragm-type, chrome plated flushometer valve with a polished exterior and a bedpan washer, polished chrome-plated cast brass 8" clinical service sink faucet with quarter-turn ceramic disc cartridges, 2 1/2" long swivel inlets (with integral stops) and a 6" centerline cast brass vacuum breaker spout with threaded outlet, a pail hook and a forked bottom brace.

#### Foot Pedal - Z85500-WM:

Polished chrome-plated brass wall-mounted, self-closing double pedal mixing valve. Two 1/2" NPT angle stop inlets on 2-1/2" [64mm] centers and one 3/8" NPT top female outlet.

#### Z5977-NEO:

NeoSeal® gasket kit for wall mounted bowls

### Compliance and Certification:



This system complies with the Buy American Act: Fixture manufactured in China; Valve manufactured in US with US and foreign parts.

Meets the American Disabilities Guidelines and ANSI A117.1 requirements when installed according to these requirements.

Fixture - Complies with ASME A119.2 / CSA B45.1

Faucet - Complies with ASME A112.18.1 / CSA B125.1

### Architectural/Engineering Approval

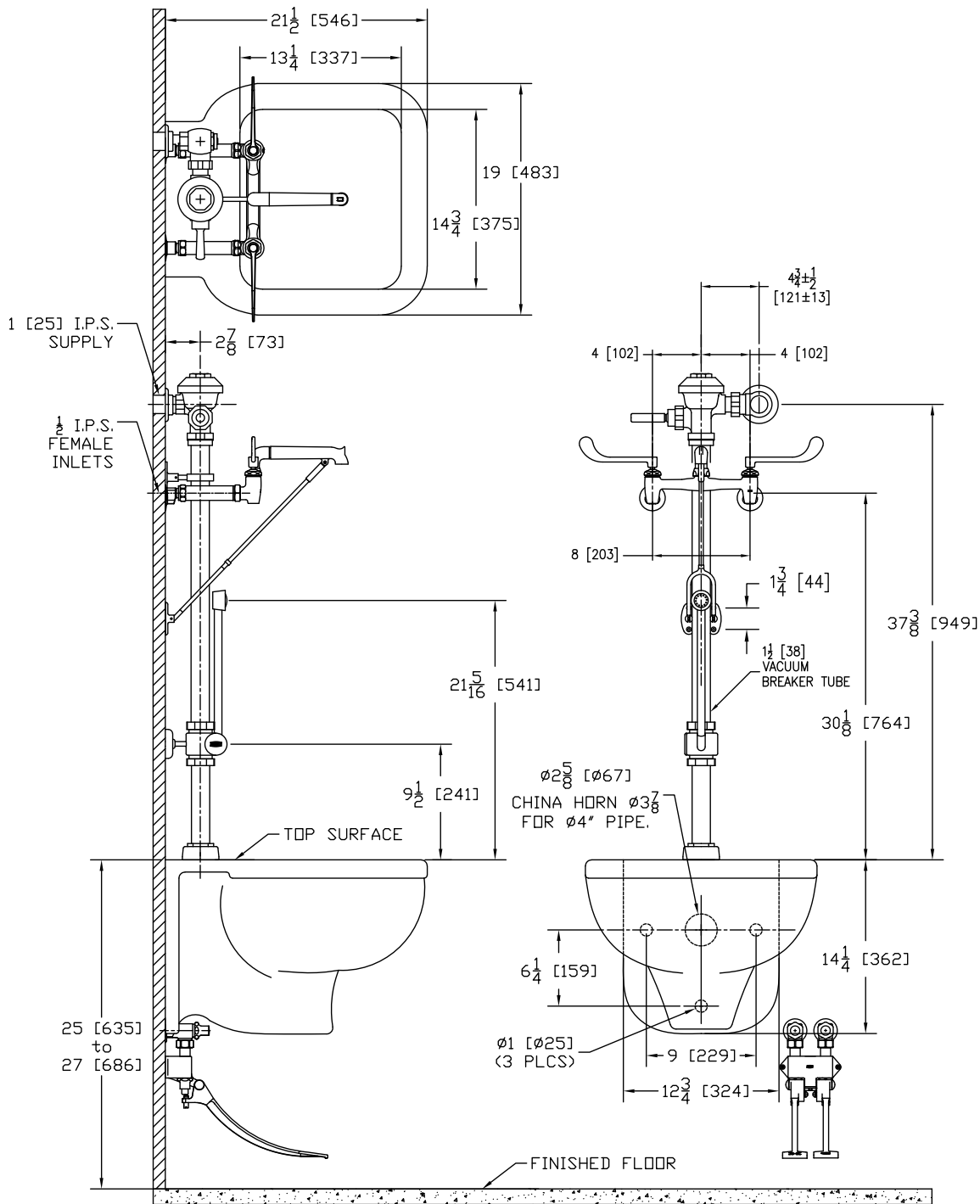
The information contained in this document is subject to change without notice. Please contact Zurn for most up to date information.



# Model: Z.CS2.M

## Zurn One Manual Wall Mounted Service Sink System with 6.5 GPF AquaVantage® Flush Valve with Bedpan Washer TAG

### Rough-in Dimensions



**This system complies with the Buy American Act:** Fixture manufactured in China; Valve manufactured in US with US and foreign parts.

Meets the American Disabilities Guidelines and ANSI A117.1 requirements when installed according to these requirements.

Fixture - Complies with ASME A119.2 / CSA B45.1

Faucet - Complies with ASME A112.18.1 / CSA B125.1