



# ZEMS6003AV-IS-MOB-W1

Connected Hardwired Automatic Sensor Valve  
for Urinals

TAG \_\_\_\_\_

## Architectural/Engineering Specification:

Zurn Connected Flush Valves transmit data 24/7 to the Zurn plumbSMART™\* web portal and mobile app. Proactively monitor your flush activations and water usage, receive real-time alerts for preset high and low usage parameters, and access system data for trends and predictive maintenance anytime and anywhere.

AquaSense® Sensor Flush Valves are ideal for high-use applications where durability and hands-free operation are necessary. ADA compliant, hardwire powered, sensor operated for retrofit and new construction. Unit is furnished with a clog resistant filter by-pass.

## Product Features:

### plumbSMART™ Portal

- Know water consumption
- Track uses per fixture
- Receive real-time alerts
- Manage maintenance tasks
- Receive insights on your data

### Flush Valve

- TPE diaphragm with clog resistant-filter by-pass, chloramine resistant and dual seal
- Proprietary dezincification resistant low lead brass alloy
- Control stop has internal siphon-guard protection and vandal resistant stop cap, sweat solder kit, wall flange with set screw.
- ZEMS automatic sensor actuator with configurable sensor range adjustment, 48 or 168 hour trap seal flush, capacitive sensing push button override and 10 degree angled sensor
- High back pressure vacuum breaker with one piece hex coupling nut
- Chloramine resistant Internal seals
- Adjustable tailpiece
- Spud coupling and flange for top spud connection
- Manual Override Button

## Technical Specification:

### Connected Endpoint

- Communicates wirelessly to Zurn gateway
- 15-foot cable provided for mounting flexibility

### Zurn Gateway:

- Communicates via Ethernet or LTE
- Works with all Zurn connected devices
- Connects all endpoints up to 1,000 ft radius
- After purchase request your gateway at: [zurn.com/plumbsmart-gateway](http://zurn.com/plumbsmart-gateway) or Call 1-844-987-6737



## Flow Options:

	Flush Volume	WaterSense* Labeled
-ULF**	0.125 gpf	✓
-EWS**	0.5 gpf	✓
-WS1	1.0 gpf	

\*\*Clog-resistant linear filter

## Suffix Options:

- FM12 Floor Mount 12" Rough In
- YJ Split Ring Pipe Support
- YK Solid Ring Pipe Support

## Valve Height Options:

	A	B
Standard	11 1/2" [292]	9 7/8" [251]
-1	16" [406]	14 3/8" [365]
-2	24" [610]	22 3/8" [568]

## Compliance and Certification:

- ADA Compliant
- WaterSense Compliant



\*This device is WaterSense labeled when used with the appropriate flow rate and certified for residential and private restrooms.

## Architectural/Engineering Approval

The information contained in this document is subject to change without notice. Please contact Zurn for most up to date information.





# ZEMS6003AV-IS-MOB-W1

Connected Hardwired Automatic Sensor Valve  
for Urinals

TAG \_\_\_\_\_

## Gateway Options:

### (Required & Sold Separately)

- LTE ZGW-LORA-W1-LTE
- Ethernet ZGW-LORA-W1-ETH

Note: plumbSMART™ is free-to-connect to a basic plan with an option to upgrade to a premium plan.

Note: LTE charges will apply to basic plan.

## Accessories:

### (Optional & Sold Separately)

- P6900-ACA 7.5VDC Plug-In ACA Power Supply (For single valve installation)
- P6000-HW6 7.6VDC Hardwired Power Converter (For up to 6 Valves)
- P6000-MJ Mini Junction Box

## How it works:

Integrated sensors continuously monitor flush valve activations and water usage. This data is transmitted to the Zurn gateway via LoRa communication. The Zurn gateway passes the data into the Zurn cloud where the data is enriched and presented in the plumbSMART web portal and mobile app. Facilities managers and/or maintenance personnel can view all data and trends in the plumbSMART™ portal and may opt to receive real-time alerts via email, text message and/or push notifications if any of these readings exceed customizable parameters for high hourly or daily usage levels. All notifications and alert parameters are adjustable via the plumbSMART™ portal. A maintenance planning tool and data insights hub are available in plumbSMART. For more information, visit <https://www.zurn.com/innovation-efficiency/plumbSMART>.

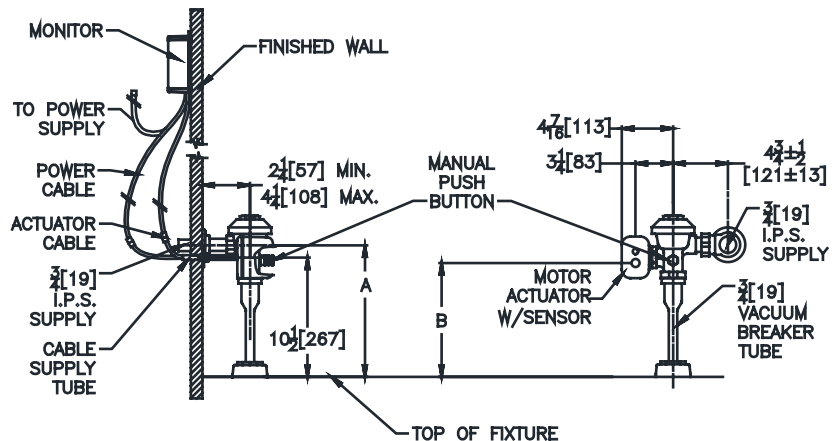
To access the plumbSMART™ portal, a Zurn Gateway must be installed within 1,000 feet of the connected product, and connected products must be registered in the Zurn plumbSMART™ portal. A single Zurn Gateway can be used to connect hundreds of Zurn connected plumbing products.

## Connecting to the plumbSMART™ Portal:

1. Visit [www.zurn.com/plumbSMART-connect](http://www.zurn.com/plumbSMART-connect) to save time and money on your installation. You can also call us at 844-987-6737.
2. Provide the serial number and contact name, email address, and basic information about the installation site.
3. We will activate your plumbSMART™ account, set up your enterprise, and give you guidance on how to register each connected product as you install it.
4. We will send a confirmation email with a link, or you can go to [plumbsmart.zurn.com](http://plumbsmart.zurn.com) to log into your plumbSMART™ account for the first time.
5. Add other users and installers to your plumbSMART™ account.
6. Make sure you and/or your installers have the plumbSMART™ mobile app, which you can download from the iPhone App Store or Google Play.
7. Using the mobile app, scan or enter the serial number to register and locate each connected plumbing product as you install it.
8. Watch the how-to videos in the plumbSMART™ portal's support section if you get stuck, or call us at 844-987-6737 for support.



## Rough-in dimensions/Overview dimensions:



### NOTE:

Monitor should be installed within a 15-foot radius of the actuator cable supply tube, and ideally behind the finished wall or above the ceiling.