



# Model: Z.L7.M

## 20" x 18" Wall Hung Lavatory

### Zurn One Manual Hand Washing System

TAG \_\_\_\_\_

#### Architectural/Engineering Specification:

Complete manual hand washing system includes 20"x18" wall hung lavatory with Z86500-XL polished chrome-plated cast brass faucet body with integral shanks and slow-closing metering cartridges, Z8743-PC chrome plated cast brass solid top grid strainer, Z8700-8B-PC series P-trap, and Z8804-XL-LR-LK-PC series supply stop kit.



#### Product Features:

- 20" [508 mm] x 18" [457 mm] enameled cast iron lavatory
- Wall hung lavatory provided with wall hanger bracket or for use with exposed arm carrier systems
- Front overflow
- Chrome-plated Cast Brass faucet body with slow closing metering cartridge
- Easily adjustable cycle time, preset to 10 seconds at 80 psi.
- 4" long integral cast spout
- Vandal resistant ADA compliant color coded handles
- Complete commercial grade grid drain, P-Trap, supply stops and supply kit.



#### Zurn One System Packout Includes:

##### Lavatory - Z5844:

20" x 18" enameled cast iron wall hung lavatory with 4" centerset faucet holes. Provided with wall hanger bracket and mounting lugs for use with exposed arm carrier systems.

##### Z86500-XL:

Polished chrome-plated cast brass faucet body with integral shanks, slow-closing metering cartridges, a 4" [102mm] long integral cast spout, and vandal-resistant ADA compliant color-coded metal handles.

##### Grid Drain - Z8743-PC:

Chrome plated cast brass solid top, open grid, P.O. plug. Furnished with 5" long, chrome plated brass 17 gauge tailpiece and chrome plated cast brass locknut.

##### P-trap w/ Wall bend - Z8700-8B-PC :

Chrome-plated cast body 1 1/4" P-trap with cleanout, tubular wall bend, brass nuts and shallow escutcheon with compression inlet.

##### Lavatory Supply Stops - Z8804-XL-LR-LK-PC:

Chrome plated solid brass angle stop with 1/2" NOM compression inlet, 3/8" OD compression outlet, loose key, chrome plated copper riser tubes and chrome plated inlet flanges.

#### Compliance and Certification:



**This system complies with the Buy American Act:** Fixture manufactured in China; Faucet manufactured in US with US and foreign parts.

Meets the American Disabilities Guidelines and ANSI A117.1 requirements when installed according to these requirements.

Fixture - Complies with ASME A119.2 / CSA B45.1

Faucet - Complies with ASME A112.18.1 / CSA B125.1

#### Architectural/Engineering Approval

The information contained in this document is subject to change without notice. Please contact Zurn for most up to date information.



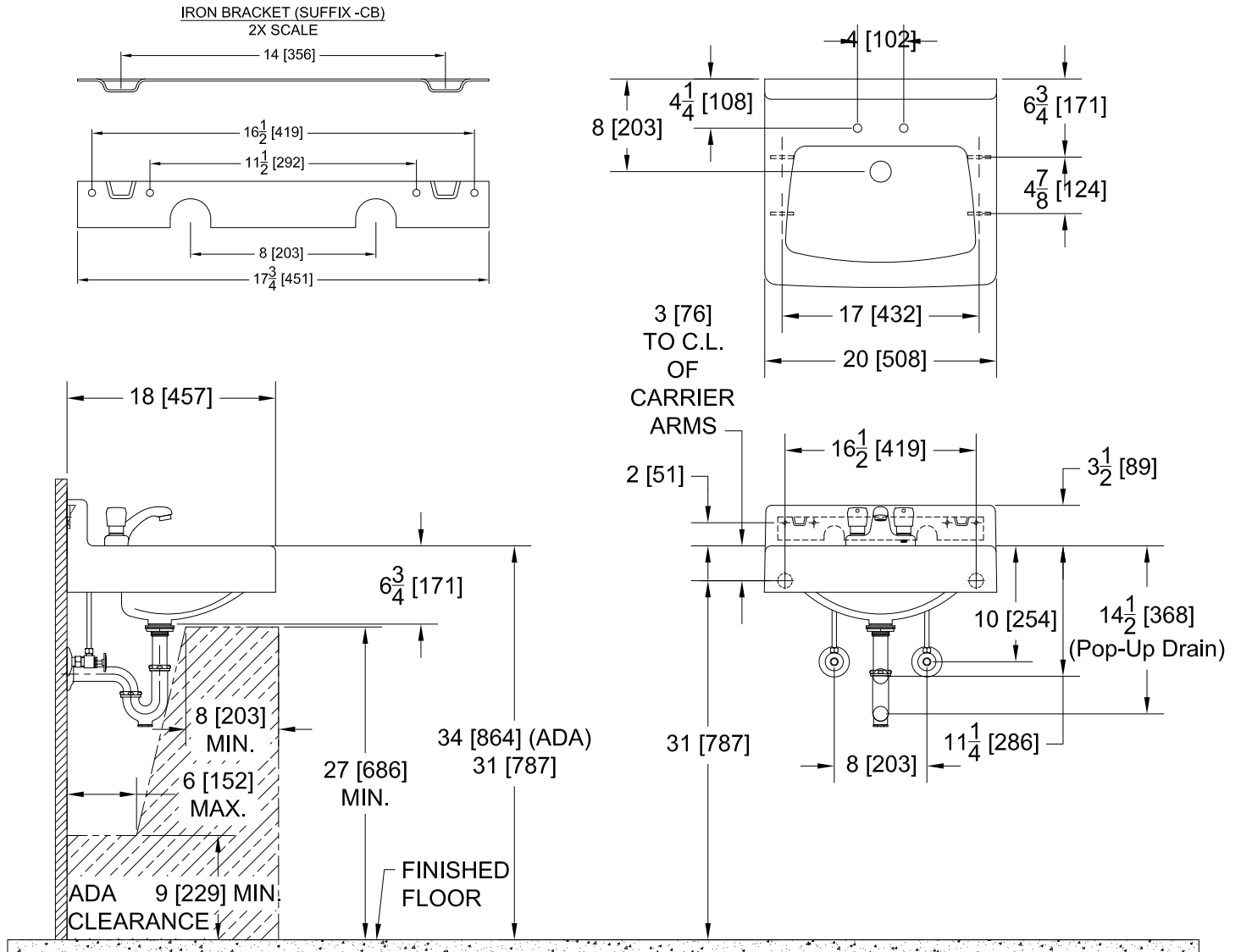
# Model: Z.L7.M

## 20" x 18" Wall Hung Lavatory

### Zurn One Manual Hand Washing System

TAG \_\_\_\_\_

#### Rough-in Dimensions



**This system complies with the Buy American Act:** Fixture manufactured in China; Faucet manufactured in US with US and foreign parts.

Meets the American Disabilities Guidelines and ANSI A117.1 requirements when installed according to these requirements.

Fixture - Complies with ASME A119.2 / CSA B45.1

Faucet - Complies with ASME A112.18.1 / CSA B125.1