



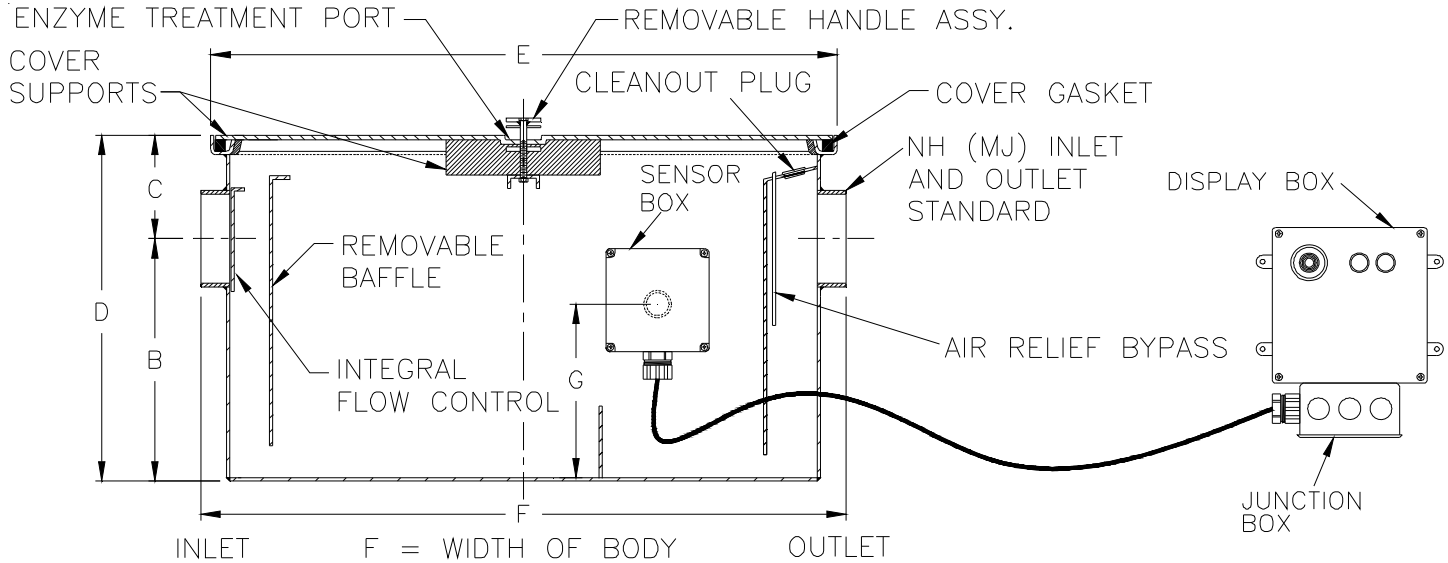
Z1170-UN

GREASE INTERCEPTOR W/USER NOTIFICATION SYSTEM

SPECIFICATION SHEET

TAG _____

Dimensional Data (inches and [mm]) are Subject to Manufacturing Tolerances and Change Without Notice



Size**	Inlet / Outlet Size	Flow Rate G.P.M./ [LPM]	Grease Wt. Lbs.[Kg]	Appx. Wt. Lbs [Kg]	Dimensions In Inches / [mm]					
					B	C	D	E	F	G
400	2 [51]	15 [57]	30 [14]	89 [40]	11-1/2 [292]	6 [152]	17-1/2 [445]	20-1/4 [514]	16-1/4 [413]	5-11/16 [145]
500	3 [76]	20 [76]	40 [18]	110 [50]	13-1/2 [343]	6 [152]	19-1/2 [495]	20-1/4 [514]	19-1/4 [489]	7-3/4 [197]
600	3 [76]	25 [95]	50 [23]	117 [53]	15-1/2 [394]	6 [152]	21-1/2 [546]	20-1/4 [514]	19-1/4 [489]	8-1/2 [216]
700	4 [102]	35 [132]	70 [32]	172 [78]	13-1/2 [343]	6 [152]	19-1/2 [495]	32-1/4 [819]	24-1/4 [616]	9-7/8 [251]
800	4 [102]	50 [189]	100 [45]	194 [88]	17-1/2 [445]	6 [152]	23-1/2 [597]	32-1/4 [819]	24-1/4 [616]	11 [280]
900	4 [102]	75 [284]	150 [68]	282 [128]	26 [662]	6 [152]	32 [814]	40-1/4 [1014]	24-1/4 [616]	11-1/4 [285]

ENGINEERING SPECIFICATION: ZURN Z1170-UN

Dura-Coated interior and exterior fabricated steel grease interceptor, rated at ____ GPM and ____ Lbs. grease capacity, with internal air relief by-pass, bronze cleanout plug, removable pressure equalizing/flow diffusing inlet baffle, fixed bottom outlet baffle, and visible double wall trap seal. Gasketed non-skid secured cover complete with center tie down assembly. Includes enclosed fiberglass sensor box (Z1194) containing an electronic grease level sensor, and a fiberglass display box with green power light, red grease level light, audio alarm, and junction box. Regularly furnished with a high inlet and outlet connection. Note: Location of inlet/outlet from bottom of interceptor cannot be changed.

PREFIXES

- ___ Z Dura-Coated Fabricated Steel*
- ___ ZS All Type 304 Fabricated Stainless Steel w/ Aluminum Cover
- ___ ZSS All Type 304 Fabricated Stainless Steel w/ Stainless Steel Cover

SUFFIXES

- ___ -AL Aluminum Cover
- ___ -AR Acid Resistant Coated Fabricated Steel
- ___ -L Angle type (Z1108-L) flow control device with plunger.

NOTE:

- *1. **Factory installed sensor box is mounted on the left or right hand side of the unit when facing inlet (must be specified).**
2. Power supply 120V GFCI.
3. Recommended Installations: Sitting on the floor or recessed in a pit only. (A pit installation requires that a drain or sump pump be installed to keep the pit relatively dry).

REV. -	DATE: 4/16/12	C.N. NO. 121886
DWG. NO. 307093	PRODUCT NO. Z1170-UN	

*REGULARLY FURNISHED UNLESS OTHERWISE SPECIFIED